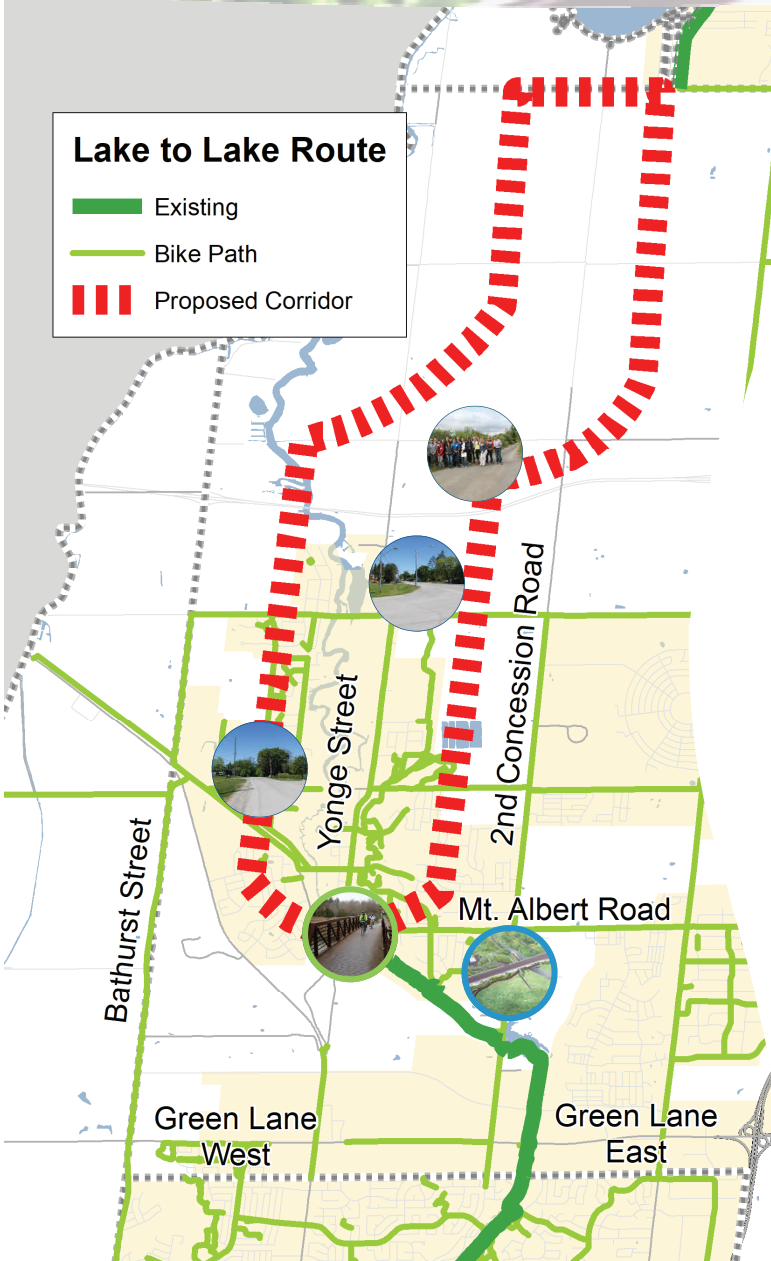


# Town of East Gwillimbury



## Completed

### Nokiidaa Trail Extension

York Region, the Town of East Gwillimbury and the Lake Simcoe Region Conservation Authority (LRSCA) expanded the Trail to Yonge Street, in addition to providing a parking lot to access the trail



### 2nd Concession Grade Separation

2nd Concession was recently constructed to provide improved connections to the Nokiidaa Trail at Roger's Reservoir with a grade-separated trail crossing.



## Future Work

York Region is working with the Lake Simcoe Region Conservation Authority (LSRCA) to identify potential route alignment for future trail extensions in East Gwillimbury.

2018 Progress	Expected Completion	Total Distance
16%	2026	18.5km