

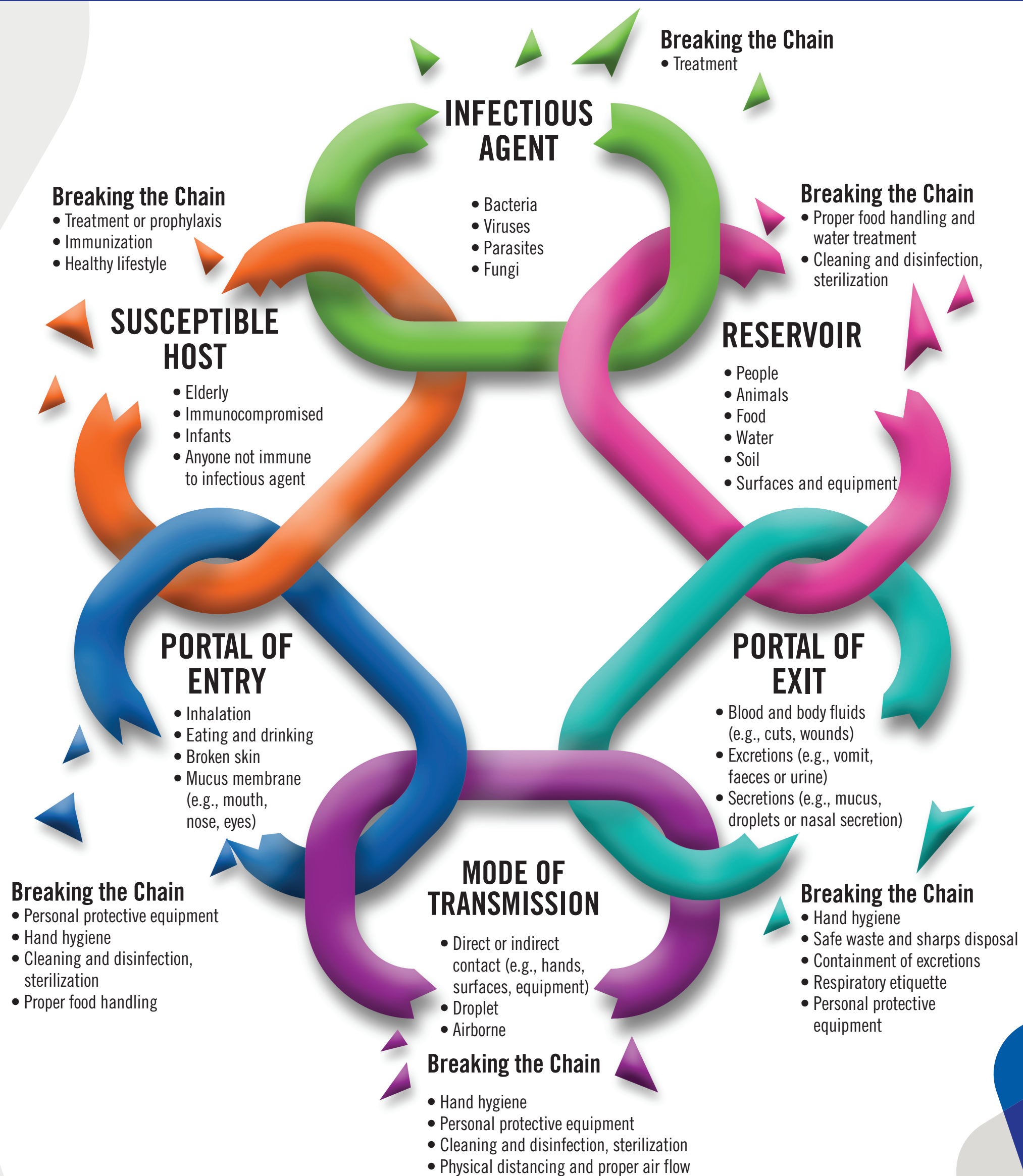
# The Chain of Transmission and Breaking the Chain

## THE CHAIN OF TRANSMISSION

Each link in the chain represents a different factor that can lead to spread of an infection. When all the links in the chain are intact it allows for disease-causing microorganisms to spread.

## BREAKING THE CHAIN OF TRANSMISSION

To help stop the spread of an infection, break any of the links in the Chain of Transmission.



**PUBLIC HEALTH**

1-800-361-5653

TTY: 1-866-512-6228

[york.ca/InfectionPrevention](http://york.ca/InfectionPrevention)