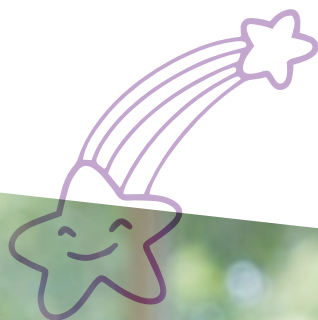


Support for School-Age Children

York Region is committed to enhancing access and inclusion for children with special needs in licensed child care. This includes children with special needs attending licensed after-school programs in York Region.

Inclusion Support Services assists early learning and child care professionals in their duty to accommodate all children by focusing on inclusive practices for the active and meaningful participation of all children.



york.ca/children
#StartswithkidsYR

**York Region**

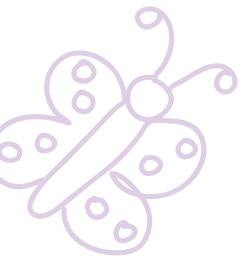
WHO'S ELIGIBLE

Inclusion Support Services provides the following supports to licensed school-age programs, caring for children ages four to 13, in York Region:

- Collaborative classroom consultation for early learning and child care professionals by a York Region Early Interventionist
- Capacity building educational opportunities on inclusive practices
- Learning opportunities to promote children's social and emotional skills, and interest in learning through Positive Early Childhood Education Program (PECE) coaching
- Connections to other resources in the community, including children's mental health supports and York Region school boards
- In partnership with the early learning and child care program, the Early Interventionist will develop a classroom plan tailored to the needs of the after-school program to build more inclusive practices to support children of all abilities

HOW TO APPLY

Licensed school-age programs can make a classroom or child-specific consultation request by submitting the **Inclusion Support Services School-Age Consultation Request Form** at york.ca/specialneeds



.....

york.ca/children
#StartswithkidsYR



York Region