

Clause 5 in Report No. 5 of Committee of the Whole was adopted, without amendment, by the Council of The Regional Municipality of York at its meeting held on March 29, 2018.

5

2016 Census Results on Income, Employment, Labour Force,
Housing, Education and Immigration

Committee of the Whole recommends adoption of the following recommendation contained in the report dated March 2, 2018 from the Commissioner of Corporate Services and Acting Chief Planner:

1. This report be circulated by the Regional Clerk to the local municipalities.
-

Report dated March 2, 2018 from the Commissioner of Corporate Services and Acting Chief Planner now follows:

1. Recommendation

It is recommended that:

1. This report be circulated by the Regional Clerk to the local municipalities.

2. Purpose

This report provides Council with an overview and analysis of income, employment, labour force, housing, education, immigration and agriculture data from the 2016 Census.

3. Background

2016 Census Overview

2016 Census Results on Income, Employment, Labour Force, Housing, Education and Immigration

Statistics Canada's nation-wide Census collects information on the demographic and social characteristics of the population

The 2016 Census included a mandatory short form questionnaire sent to all households, a mandatory long form questionnaire sent to a random sample of 1 in 4 households and the mandatory Census of Agriculture.

The short form questionnaire consists of questions on population, age, household characteristics and language. The long form questionnaire collects a range of demographic data including immigration, place of work, income, education, and ethnicity.

Statistics Canada has released all 2016 Census data. A [November 16, 2017](#) staff report summarized data releases for York Region up to August 2017 (not including the May 10, 2017 agriculture release).

Table 1
2016 Census Release Dates

Census of Population	
Release Date	Release Topic
February 8, 2017	Population and Dwelling Counts
May 3, 2017	Age and Sex, Type of Dwelling
May 10, 2017	Census of Agriculture
August 2, 2017	Families, Households and Marital Status, Language
September 13, 2017	Income
October 25, 2017	Immigration and Ethnocultural Diversity, Housing, Aboriginal Peoples
November 29, 2017	Education, Labour, Journey to Work, Language of Work, Mobility and Migration

This report summarizes the findings of data from the final releases pertaining to income, employment, labour force, housing, education, immigration and includes the agriculture release.

Census data plays a vital role in Regional planning and service delivery

Census data is important to York Region and its local municipalities, providing detailed information on the characteristics of the Region's population and economy. The information collected is used by various regional and local

2016 Census Results on Income, Employment, Labour Force, Housing, Education and Immigration

municipal departments including planning and economic development, environmental services, transportation, finance and community and health services and will be integral to the work being done for the Municipal Comprehensive Review (MCR). Examples of how Census data is used throughout the Region is provided in Attachment 1, and includes:

- Providing the basis for the Region's long term population and employment forecasts
- Planning for services such as roads, transit, water and sewer infrastructure
- Providing base line data for municipal funding and federal/municipal transfer funds
- Monitoring targets in the Regional Official Plan and Provincial Growth Plan including urban growth centres, intensification targets, employment and density targets
- Providing input to various Regional initiatives such as York Region's Seniors Strategy, Ten Year Housing Plan, Immigration Settlement Strategy and assisting the Human Services Planning Board to identify and address future human service needs

A Census Data Working Group was established across Regional departments

The objective of the data working group is to collaborate on interpretation and analysis of Census data and to produce products in a timely manner for information purposes. The working group produced a series of bulletins, covering information from all the Census releases, which can be found on the York Region web site (www.york.ca/census) and are included as Attachment 2 in this report.

Census data provides insight to promote economic vitality

Economic Vitality is a goal in York Region's Official Plan, which seeks "to create a competitive and flexible economic environment that encourages investment and a diversity of employment opportunities." Analysis of Census data in the areas of labour force, employment, and income provides insight into the state of York Region's economy and identifies competitive pressures facing York Region's labour market and employment base.

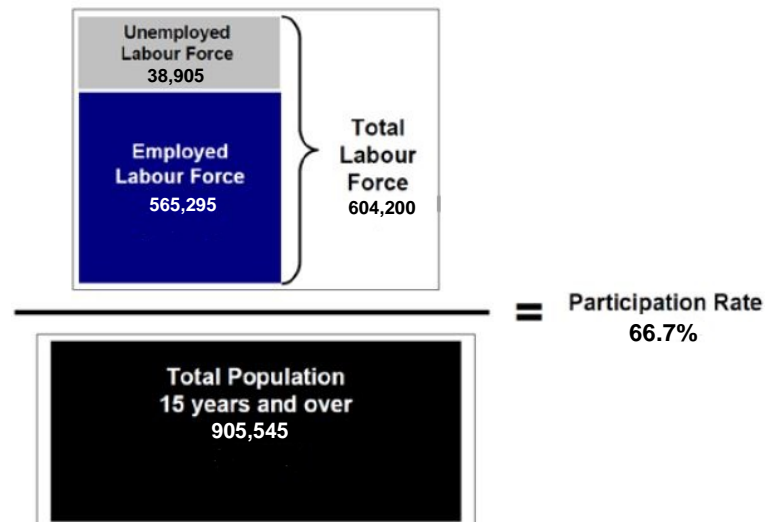
4. Analysis and Implications

Labour Force

York Region's employed labour force was 565,295 in 2016

According to the Census, there were 604,200 York Region residents aged 15 years and over in the total labour force in 2016. The total labour force figure includes persons who were either employed or unemployed (yet were actively looking for work). Ninety four percent of the total labour force, or 565,295, were employed. Figure 1 shows how the total labour force figure is broken down as well as how the labour force participation rate is derived.

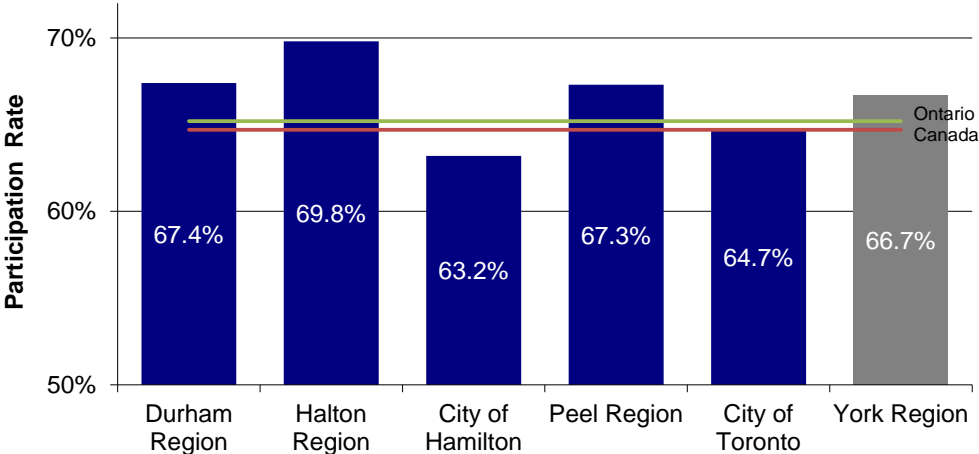
Figure 1
Total Labour Force Breakdown, York Region, 2016



The participation rate measures the total labour force (including those who are employed and unemployed) relative to the size of the population 15 years of age and over, excluding institutional residents. In other words, it is the share of the working-age population that is working or looking for work. Figure 2 shows the participation rate of each upper and single-tier municipality in the Greater Toronto and Hamilton Area (GTHA). The participation rate in York Region was 66.7% in 2016, which is higher than Ontario and Canada, but ranks fourth among GTHA municipalities. The participation rate in York Region has decreased since 2006 when it was 70.5%.

Figure 2
Participation Rates,
GTHA, Ontario and Canada, 2016

2016 Census Results on Income, Employment, Labour Force, Housing, Education and Immigration



York Region’s aging population is a factor that may lower the participation rate of its resident labour force in the years to come. York Region will be competing with other municipalities in the GTHA and Ontario for migrants and it is important that the Region remains an attractive destination for residents, workers, and businesses.

In 2016, the 565,295 employed York Region residents worked across a wide variety of industries. Employment growth in services-producing sectors such as professional, scientific and technical services, health care and transportation and warehousing are amongst the fastest growing industry sectors. The top five industries by employment were Retail Trade (11.4%), Professional, Scientific and Technical Services (11.3%), Manufacturing (9.2%), Healthcare and Social Services (8.7%) and Financial and Insurance Services (8.5%).

More people are working past the age of 65

Compared with a decade ago, more of York Region’s seniors remained active in the labour force in their late 60s and even their 70s. In 2006, seniors represented only 2.5% of York Region’s labour force. However, in 2016, the proportion of seniors in the Region’s labour force nearly doubled to 4.5% (reaching a total of 26,885 workers).

Of the total working-age population, women are almost equally represented in the labour force with men in York Region. The 2016 Census reported 291,340 women in York Region’s labour force, or 48.2% of the total labour force in 2016, an increase from 47.8% in 2006.

Fewer people are working full-time than in the past

The 2016 Census data recorded fewer employed York Region residents working full-time than at any time in the past decade. According to the 2016 Census,

2016 Census Results on Income, Employment, Labour Force, Housing, Education and Immigration

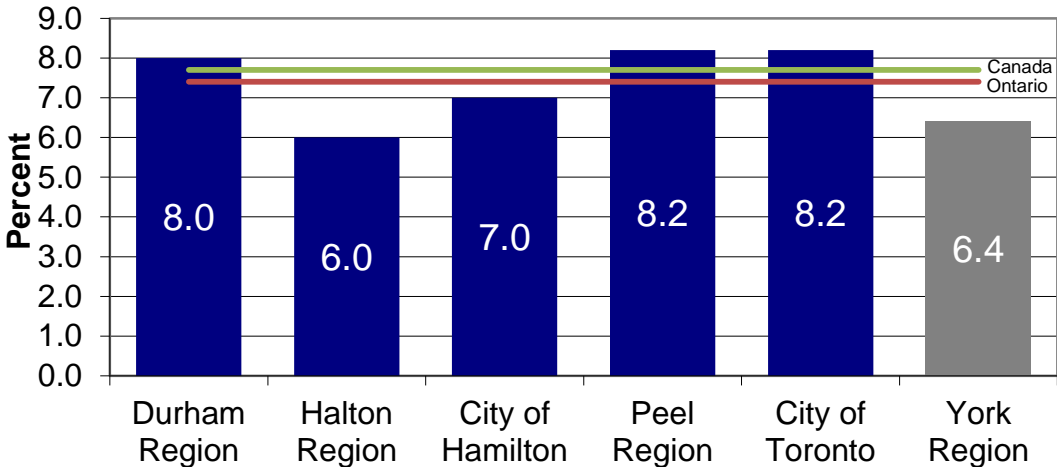
53.1% of employed residents worked full-time, down from 57.0% in the 2006 Census, with a corresponding increase in part-time employment.

York Region’s unemployment rate is among the lowest in the Province

York Region’s unemployment rate of 6.4% in 2016 (see Figure 3) was among the lowest in Ontario, and the second lowest in the GTHA upper and single tier municipalities (slightly higher than Halton Region).

For the working-age population between 25 and 64 years of age in York Region the unemployment rate was 4.8%. However, the unemployment rate faced by younger residents between the ages 15 and 24 was much higher, at 17.5%.

Figure 3
Unemployment Rates,
GTHA, Ontario, and Canada, 2016



Education

70% of York Region’s working age population (aged 25-64) have a post-secondary education, the second highest in the GTHA

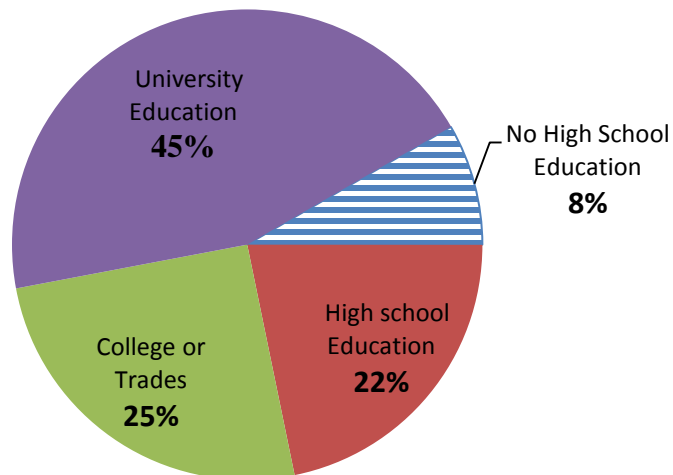
Overall York Region residents are well educated. In 2016, 45% (or 269,535) of York Region’s working-age residents between 25 and 64 years of age, were pursuing or had a university certificate, diploma or degree, while an additional 25% reported the same for a college and trade related education.

2016 Census Results on Income, Employment, Labour Force, Housing, Education and Immigration

York Region ranks fourth in Canada and second in the GTHA for the proportion of residents with a university degree at bachelor level or above. Only 8% (or 50,360) of York Region's working-age residents had not completed a high school certificate, diploma or degree in 2016. This was the second lowest share of residents without a high school education in the GTHA, after Halton Region.

York Region is in competition with municipalities across the world to attract new employers, skilled employees and high quality well-paying jobs. A number of major international and domestic companies make decisions to locate in York Region to access the Region's talented workforce.

Figure 4
Level of Education of the Working Age Population (Aged 25-64)
in York Region



Source: Statistics Canada, 2016 Census

Immigration

York Region is ethno-culturally diverse with more than 230 distinct ethnic origins reported in the 2016 Census

York Region was home to an estimated 515,225 immigrants in 2016, approximately 47% of the total population. In 2016, York Region had the third

2016 Census Results on Income, Employment, Labour Force, Housing, Education and Immigration

highest proportion of immigrant population in the GTHA, after Peel Region (52%) and Toronto (47%). In 2016, 541,200 residents within York Region identified themselves as a member of a visible minority group, representing 49% of the total population.

Of the total 515,225 immigrants living in York Region, 51,410 arrived in Canada between 2011 and 2016. These recent immigrants made up 10% of the total immigrant population and approximately 5% of the total population in York Region.

51% of York Region immigrants have a university degree

York Region has a large number of highly educated immigrants, many of whom have connections within the global economy. The percentage of all immigrants with a university certificate, diploma or degree was 51% in 2016, compared to 41% of the Canadian-born population. Of the total working-age residents (25 to 64 years of age) with a post-secondary education, 31% (or 130,375) studied outside of Canada. The top three locations of study outside of Canada were China, the United States and India.

Employment

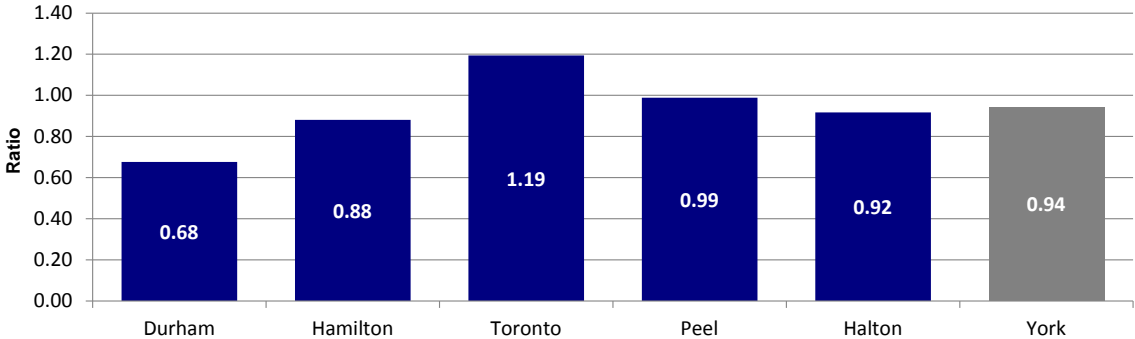
Total number of jobs in York Region is almost equal to the resident employed labour force

The jobs to resident employed labour force ratio gauges the strength of the regional economy by comparing the number of jobs to the resident employed labour force. A ratio of 1 implies that one job opportunity is being created for every member of the resident employed labour force. This ratio relates directly to the Regional Official Plan policy of “creating high-quality employment opportunities for residents with the goal of 1 job for every 2 residents”, which is based on the assumption that about half of the Region’s population is in the labour force.

At the regional scale, York Region’s jobs to resident employed labour force ratio was 0.94 in 2016, the third highest ratio among GTHA municipalities (see Figure 5).

Figure 5
Jobs to Resident Employed Labour Force Ratio, GTHA, 2016
Resident Employed Labour Force Aged 15 Years and Over

2016 Census Results on Income, Employment, Labour Force, Housing, Education and Immigration



Source: 2016 Census York Region resident employed labour force: 565,295
2016 Census York Region employment: 532,895

The City of Toronto is the only municipality with a ratio of over 1 (1.19), meaning that a larger share of its employment is filled by workers from other municipalities. Durham Region has the lowest ratio at 0.68, meaning a larger share of its resident employed labour force go outside of Durham to find employment.

York Region’s live-work percentage has improved

The live-work percentage depicts the number of residents who are in the employed labour force that live and work within the same municipality. Improving the York Region live-work percentage is positive for the economy. Shorter commute times, less traffic congestion on roads and more quality time for workers to spend with their families improve the quality of life and strength of the overall economy in York Region.

York Region’s live-work percentage of 57.6% in 2016 (the percentage of residents who live and work within the Region) shows a small improvement compared to 2006 Census data (55.7% in 2006). York Region’s live-work percentage is higher than Halton’s (53.9%) and lower than the Cities of Toronto (82.4%) and Hamilton (69.2%) and the Regions of Peel (65.5%) and Durham (58.6%).

Number of York Region residents taking transit to work increased by 45%, the highest increase in the GTHA

The percentage of commuters who use public transit was 12.8% in York Region in 2016, third highest in the GTHA behind Peel and Toronto. The number of residents taking transit to work has increased, from 45,000 in 2006 to 65,320 in 2016, an increase of 45%. This was the highest increase in the GTHA. However, driving a car, truck or van was by far the most commonly used mode of transportation, with 77.3% of commuters (395,785 workers) driving a vehicle to work. Another 6.4% (32,935 people) made the work trip as passengers. The

2016 Census Results on Income, Employment, Labour Force, Housing, Education and Immigration

average commuting duration of all residents that commuted was approximately 34.6 minutes.

The transit investments the Region is making support business and job growth and is paying off with increasing transit ridership. The subway extension into Vaughan, the construction of VIVA rapidways and two-way all-day Regional Express Rail to GO transit stations into York Region will greatly improve the level of service, further increasing transit ridership and help attract increasing numbers of businesses and workers.

Agriculture

The 2016 Census recorded 712 farms in York Region, with an estimated 3,255 jobs related to agriculture

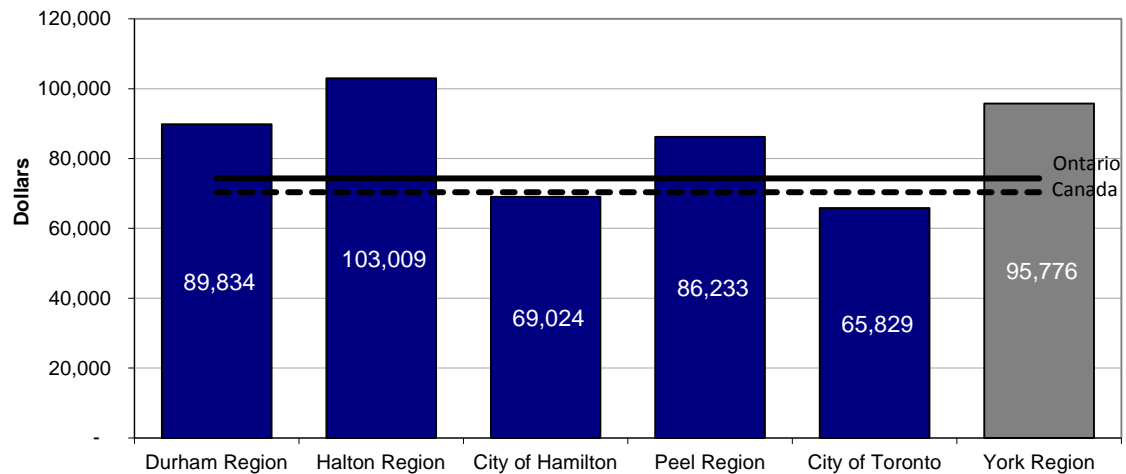
According to the [Agriculture and Agri-food strategy report](#), the economic impact of the agricultural industry in York Region continues to grow with gross farm sales totalling approximately \$301 million in 2016. According to the 2016 Census, York Region had the second highest gross farm receipts per acre in the Greater Golden Horseshoe (GGH) in 2016 at \$2,114 per acre. The top three commodities produced in York Region by dollar value were fruits and vegetables (\$74.8M), floriculture and nursery (\$25.1M) and sod (\$16.4M). Seventy-one per cent (71%) of farms in York Region are smaller than 130 acres in size, and 61% of all farm operators are over the age of 55. Across the GGH, York Region accounts for 15% of the total farmland available, behind Durham Region (31%) and Niagara Region (23%).

Income

York Region median household income ranks second among all municipalities in Ontario

According to the 2016 Census, York Region's median household income in 2015 was \$95,776, ranking second among all municipalities in Ontario. Figure 6 compares median household incomes across the GTHA to that of Ontario (\$74,287) and Canada (\$70,336).

Figure 6
Median Household Income, GTHA, Ontario and Canada, 2015

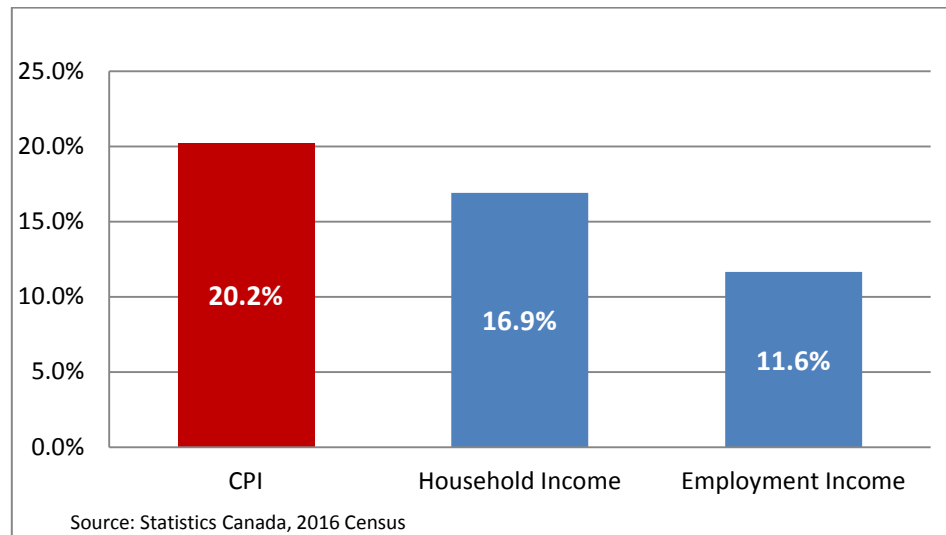


Continued investments in education and skills training will ensure that York Region's household income levels remain strong in the years to come. The development of the new York University campus in Markham and implementation of York Region's Economic Action Plan strive to maintain and improve the link between higher education and a talented labour force.

Income growth in York Region is not keeping up with the growing cost of living

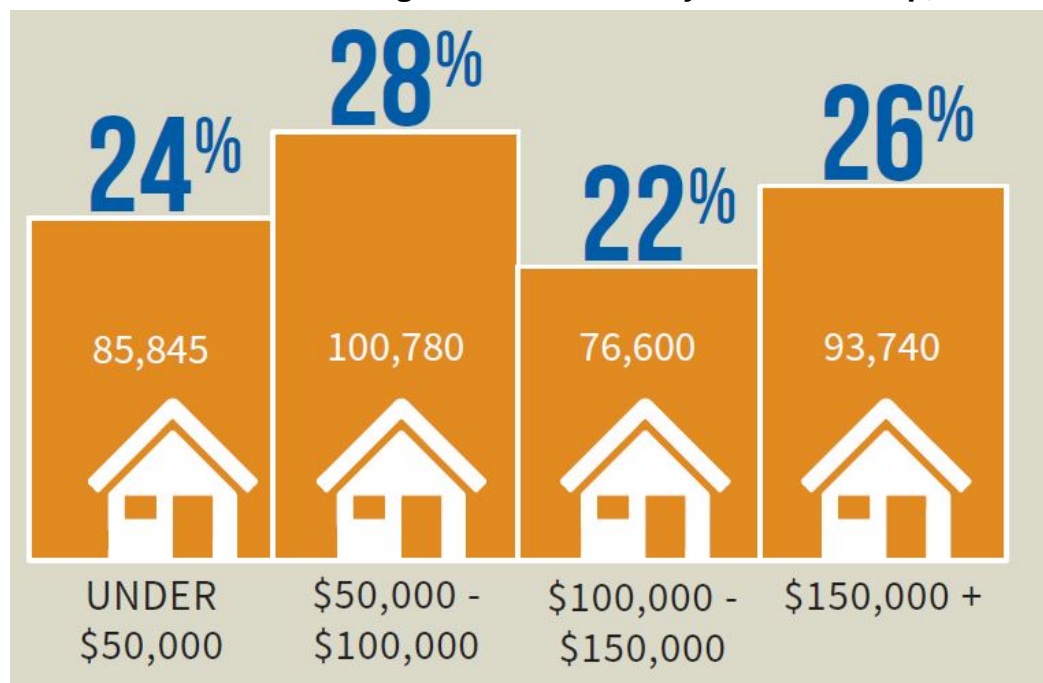
Between 2005 and 2015, median household income increased by 16.9% in York Region, while individual income (includes all income sources such as wages, salaries, investments and pensions) increased by 14.4% and employment income (includes wages and salaries) increased by 11.6%. However, the income growth in York Region is not keeping up with the growing cost of living. The Ontario consumer price index (inflation) shows that prices in 2015 increased an average of 20.2% since 2005, as shown in Figure 7. This suggests that household and employment income, adjusted for inflation, has decreased over the last ten years by 2.8% and 7.1% respectively.

Figure 7
Consumer Price Index and Income Growth in York Region, 2005-2015



The median household income in York Region increased from \$81,928 in 2005 to \$95,776 in 2015 (16.9%). Almost 48% of respondents reported an annual household income of over \$100,000, as shown in Figure 8.

Figure 8
Distribution of York Region Households by Income Group, 2015



2016 Census Results on Income, Employment, Labour Force, Housing, Education and Immigration

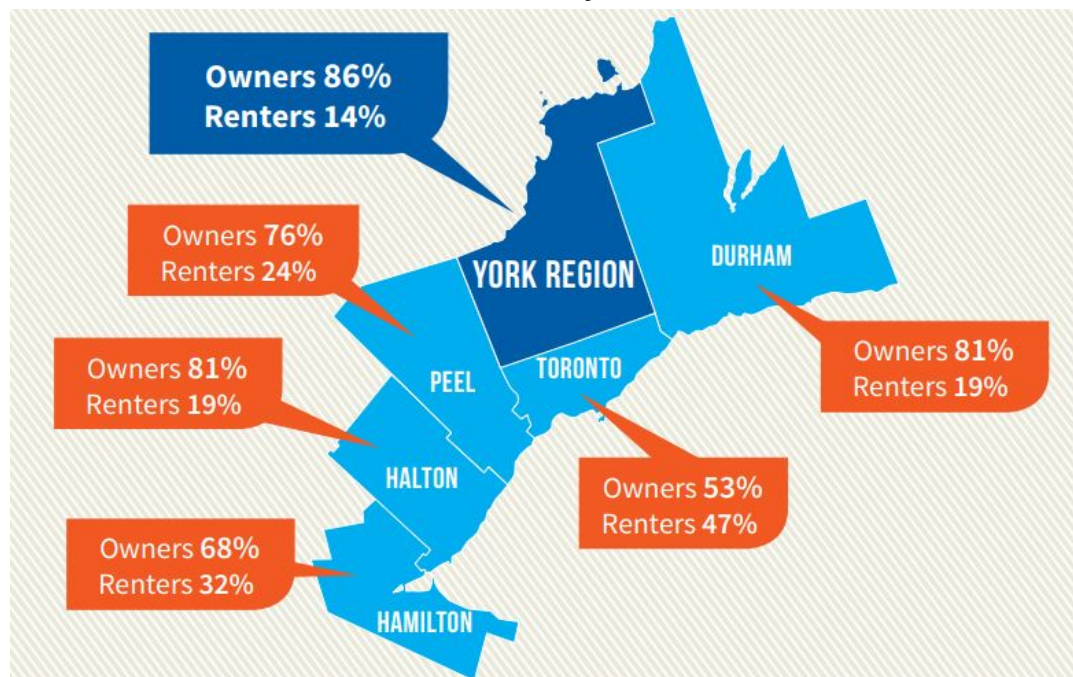
Housing

York Region has the highest rate of homeownership in the GTHA

In 2016, 85.8% (306,030) of households in York Region were occupied by owners, the highest rate of homeownership in the GTHA (see Figure 9). In comparison, 69.6% of the total households in Ontario and 67.8% in Canada were owner occupied. Between 2006 and 2016, the number of owner occupied households in York Region increased by 26%.

In 2016, 63% of York Region owner households had a mortgage, while 37% were without a mortgage.

Figure 9
Private Households by Tenure, GTHA, 2016



Total number of rental households in York Region increased by 56% between 2006 and 2016

In 2016, only 14.2% (50,485) of total households in York Region were occupied by renters. This includes primary purpose built rental housing and units in the secondary rental housing market. This is the lowest proportion of renter households in the GTHA. In comparison, 30.4% of the total households in Ontario and 32.2% in Canada were renter occupied households.

2016 Census Results on Income, Employment, Labour Force, Housing, Education and Immigration

However, between 2006 and 2016 the total number of renter households in York Region increased by 56%, outpacing the growth of owner households, at 26%. This is the highest increase of renter occupied households in Ontario and the third highest in Canada since 2006.

5. Financial Considerations

Data from the 2016 Census is used by various Regional departments to support a number of regional initiatives as outlined in Attachment 1. York Region's departments coordinate and share Census data purchases within the Region.

Some of the data used in this report was purchased through a consortium of GTHA municipalities. A collective purchase of key cross tabulations on labour force, employment, and income reduces cost to the Region and is included in the approved budget.

6. Local Municipal Impact

The information provided from the Census is of great value to the Region, its local municipalities, and other public and private agencies, providing information on the demographic, social, and economic characteristics of the Region's population. Local municipalities use this data to inform decisions related to the planning of infrastructure, servicing, and land use. The Region shares custom Census data tabulations with local municipalities.

7. Conclusion

Census data indicates that York Region has a strong and diverse labour force – one of the most highly educated in the GTHA and Canada. Forty-seven percent (47%) of the Region's residents are foreign born and over half of these immigrants have post-secondary education with connections to the global economy.

The number of York Region residents taking transit to work increased by 45% between 2006 and 2016, the highest increase in the GTHA. During the same time period, York Region's live-work percentage (defined as the percentage of residents who live and work within the Region) improved from 55.7% to 57.6%.

As the competition for skilled workers grows, Regional initiatives that strive to attract and retain both businesses and residents in the Region will be important. Attracting knowledge-based jobs to York Region, along with the provision of affordable housing are examples of Regional efforts to strengthen the Regional economy.

2016 Census Results on Income, Employment, Labour Force, Housing, Education and Immigration

Census data collected is used by various Regional departments including planning and economic development, environmental services, transportation, finance and community and health services and will be integral to upcoming work for the MCR.

For more information on this report, please contact Paul Bottomley, Manager, Policy, Research and Forecasting, at 1-877-464-9675 ext. 71530.

The Senior Management Group has reviewed this report.

Recommended by:

Paul Freeman, MCIP, RPP
Acting Chief Planner

March 2, 2018

Attachments (2)

8248460

Accessible formats or communication supports are available upon request

York Region Department	Examples of how Census Data is used by Department
Community and Health Services	<ul style="list-style-type: none"> • Analyze trends in immigrant population to build comprehensive understanding of newcomers needs. • Inform decisions impacting newcomer services (Local Immigration Partnership, Newcomers Centres, Community Agencies) • Assess the needs for community programs and services to determine how funds should be allocated (Social Services, programs for children, employment services, Community Investment Strategy) • Analyze York Region’s children population and to develop Children’s profile and programs such as day care • Provide background information for the updated 10 year Housing Plan and determine the needs for subsidized housing and Home Repair Program • Planning and development of York Region’s Senior Strategy and to assist for program planning for seniors, supportive living and long-term care. • Public Health uses Census data for Chronic Disease Surveillance and Monitoring Programs, and for health policy planning and analysis • The Human Services Planning Board (HSPB) of York Region uses Census data to understand income trends to find new ways on improving health and well-being for low and moderate income residents by addressing such issues as the lack of affordable housing and economic and social well-being
Transportation	<ul style="list-style-type: none"> • Census data provides base information for the Transportation Forecasting Model • The Transportation Forecasting Model is then applied to a wide variety of planning studies, including Transportation Master Plans, Road and Transit Environmental Assessment Studies and Transportation Impact Studies for Development Approvals

<p>Corporate Services – Long Range Planning Division</p>	<ul style="list-style-type: none"> • Census data provides base information for the Population and Employment Forecast Model which is used as input into a number of major regional initiatives and studies including the Development Charges By-law, the Transportation Master Plan and the Water and Wastewater Master Plan • Census data will also be used extensively as input to the Region’s Municipal Comprehensive Review (MCR) including: <ul style="list-style-type: none"> ○ Land Needs Assessment ○ Housing Strategy ○ Intensification Strategy ○ Employment Strategy ○ Vacant Employment Land Inventory Update ○ Vacant Residential Land Inventory Update ○ Delineation of Major Transit Station Areas (MTSA) and targets ○ Indigenous Engagement and Public Consultation • Other Long Range Planning projects that utilized Census data include: <ul style="list-style-type: none"> ○ 10 Year Housing Plan Progress Report ○ Housing Matters Update – background to the 10 Year Housing Plan ○ Mid-Range Affordable Housing Incentives: Development of Framework ○ Affordable Housing Monitoring ○ Monitoring of targets and policies in the Regional Official Plan ○ Agricultural System Update ○ Live / Work studies ○ Base data for Short Term Forecast ○ Urban growth centre targets ○ Intensification targets ○ Designated Greenfield Density targets ○ Community Energy Plan ○ Demographic and Socio Economic Analysis studies
--	---

2016 **CENSUS** **RELEASE** REPORTS

TABLE of CONTENTS



A. POPULATION, DWELLINGS, AGE and SEX	A1
YORK REGION 2016 CENSUS POPULATION BY LOCAL MUNICIPALITY	A1
2016 POPULATION BY GREATER TORONTO AND HAMILTON AREA (GTHA) MUNICIPALITY	A2
2016 AVERAGE AGE.	A2
YORK REGION LABOUR FORCE REPLACEMENT RATIO	A2
2016 YORK REGION POPULATION BY GENDER	A2
2016 YORK REGION POPULATION BY AGE AND PER CENT CHANGE SINCE 2011	A2
2011-2016 DWELLING UNIT GROWTH BY GTHA MUNICIPALITY.	A3
2016 YORK REGION HOUSEHOLDS BY: TYPE OF DWELLING, HOUSEHOLD SIZE	A3
GROWTH RATE BY TYPE OF DWELLING	A3
AVERAGE HOUSEHOLD SIZE BY GTHA MUNICIPALITY	A3
2016 HOUSING UNIT MIX BY LOCAL MUNICIPALITY	A4
2016 POPULATION BY AGE BY LOCAL MUNICIPALITY AND PER CENT CHANGE SINCE 2011	A4
B. AGRICULTURE	B1
TOTAL GROSS FARM RECEIPTS AND FARM AREA BY LOCAL MUNICIPALITY	B1
2016 GROSS FARM RECEIPTS PER ACRE ACROSS THE GOLDEN HORSESHOE	B2
YORK REGION FARM AREA BY CENSUS YEAR	B2
NUMBER OF FARMS IN YORK REGION	B2
DISTRIBUTION OF FARMLAND ACROSS THE GOLDEN HORSESHOE.	B2
YORK REGION FARMS BY SIZE	B3
FARMLAND USES IN YORK REGION	B3
YORK REGION FARMLAND TENURE	B3
VALUE (\$) OF TOP COMMODITIES IN YORK REGION.	B3
YORK REGION FARMS BY INDUSTRY	B3
2016 YORK REGION TOP THREE MAJOR VEGETABLE, FRUITS AND FIELD CROPS	B4
2016 LIVESTOCK AND POULTRY INVENTORIES	B4
DID YOU KNOW?.	B4
C. FAMILIES, HOUSEHOLDS, MARITAL STATUS and LANGUAGE	C1
YORK REGION KNOWLEDGE OF OFFICIAL LANGUAGES BY LOCAL MUNICIPALITY	C1
2016 MARITAL STATUS BY GTHA	C2
MARITAL STATUS IN YORK REGION AND PER CENT CHANGE SINCE 2011 FOR POPULATION AGED 15+	C2
2016 YORK REGION FAMILIES BY CENSUS FAMILY TYPE AND PER CENT CHANGE SINCE 2011	C2
YORK REGION ONE PERSON HOUSEHOLDS	C3
YORK REGION MULTIPLE FAMILY HOUSEHOLDS	C3
2016 KNOWLEDGE OF OFFICIAL LANGUAGES IN YORK REGION	C3
NON-OFFICIAL LANGUAGES SPOKEN AT HOME MOST OFTEN IN YORK REGION	C3
HOUSEHOLD LANGUAGES.	C3
HOUSEHOLD COMPOSITION BY LOCAL MUNICIPALITY	C4
2016 YORK REGION FAMILIES BY CENSUS FAMILY TYPE AND LOCAL MUNICIPALITY	C4
D. INCOME	D1
MEDIAN HOUSEHOLD INCOME AND GROWTH SINCE 2006.	D1
MEDIAN HOUSEHOLD INCOME IN THE GTHA	D2
INCOME AND COST OF LIVING SINCE 2006.	D2
YORK REGION MEDIAN INDIVIDUAL INCOME COMPARED TO ONTARIO AND CANADA	D2
DISTRIBUTION OF YORK REGION HOUSEHOLDS BY INCOME GROUP	D3
RESIDENTS REPORTING INCOME FROM EMPLOYMENT IN THE GTHA	D3
PROPORTION OF POPULATION IN LOW INCOME HOUSEHOLDS.	D3
YORK REGION INCOME COMPOSITION	D3
MEDIAN EMPLOYMENT INCOME IN YORK REGION	D3
EMPLOYMENT INCOME AND COST OF LIVING SINCE 2006.	D3
DEFINITIONS	D4
YORK REGION HOUSEHOLDS BY INCOME GROUP	D4



TABLE of CONTENTS

E. HOUSING	E1
HOUSING IN YORK REGION	E1
HOUSING IN THE GTHA	E2
SPENDING ON HOUSING COSTS	E2
HOUSING BY AGE OF PRIMARY HOUSEHOLD MAINTAINER	E3
GTHA OWNER HOUSEHOLDS WITH OR WITHOUT MORTGAGES	E3
MEDIAN MONTHLY HOUSING COSTS IN YORK REGION	E3
INCREASE IN HOUSING COSTS COMPARED TO INCOME SINCE 2006	E3
OWNERS WHO SPEND MORE THAN 30% OF HOUSEHOLD INCOME ON HOUSING	E4
RENTERS WHO SPEND MORE THAN 30% OF HOUSEHOLD INCOME ON HOUSING	E4
DEFINITIONS	E4
<hr/>	
F. IMMIGRATION and ETHNOCULTURAL DIVERSITY	F1
DISTRIBUTION OF RECENT IMMIGRANTS BY LOCAL MUNICIPALITY	F1
RECENT IMMIGRANTS LIVING IN THE GREATER TORONTO AND HAMILTON AREA (GTHA)	F2
RECENT IMMIGRANTS TO YORK REGION, ONTARIO AND CANADA	F2
VISIBLE MINORITIES IN CANADA, ONTARIO AND THE GTHA	F3
PROPORTION OF GTHA POPULATION WHO REPORTED AS IMMIGRANTS	F3
TOP VISIBLE MINORITY GROUPS IN YORK REGION	F3
TOP 10 COUNTRIES OF ORIGIN FOR RECENT IMMIGRANTS TO YORK REGION	F4
TOP 10 ETHNIC ORIGINS IN YORK REGION	F4
DEFINITIONS	F4
<hr/>	
G. EDUCATION, MOBILITY, MIGRATION	G1
POPULATION WITH POST-SECONDARY EDUCATION.	G1
POPULATION WITH POST-SECONDARY EDUCATION IN THE GTHA	G2
LEVEL OF EDUCATION ACROSS THE GTHA	G2
YORK REGION RESIDENTS BY LEVEL OF EDUCATION	G3
LOCATION OF POST-SECONDARY STUDY	G3
LEVEL OF EDUCATION BY LOCAL MUNICIPALITY, POPULATION AGED 25-64	G4
MOBILITY STATUS - CHANGE IN PLACE OF RESIDENCE- 2011 TO 2016	G4
DEFINITIONS	G4
<hr/>	
H. LABOUR and JOURNEY TO WORK	H1
UNEMPLOYMENT RATE AND LABOUR FORCE BY LOCAL MUNICIPALITY	H1
UNEMPLOYMENT RATES ACROSS THE GTHA	H2
YORK REGION WORK ACTIVITY	H2
YORK REGION 2016 EMPLOYED LABOUR FORCE BY PLACE OF WORK STATUS	H2
TOP FIVE INDUSTRIES IN YORK REGION'S EMPLOYED LABOUR FORCE	H2
MORE SENIORS (65+) IN YORK REGION'S LABOUR FORCE.	H2
AVERAGE COMMUTE TIMES FOR THE EMPLOYED LABOUR FORCE IN THE GTHA.	H3
2016 MODE OF TRAVEL TO WORK IN YORK REGION.	H3
AVERAGE COMMUTE TIME BY MODE OF TRAVEL TO WORK IN YORK REGION	H3
SINCE 2006, THE NUMBER OF RESIDENTS TAKING TRANSIT TO WORK HAS INCREASED ACROSS THE GTHA	H3
OVER HALF OF YORK REGION'S EMPLOYED LABOUR FORCE COMMUTE MORE THAN 30 MINUTES TO WORK	H3
LANGUAGE OF WORK IN YORK REGION	H3
YORK REGION RESIDENTS WORKING WITH NO FIXED WORKPLACE	H4
YORK REGION RESIDENTS WORKING AT HOME	H4
YORK REGION RESIDENTS WORKING AT USUAL PLACE	H4
DEFINITIONS	H4

2016 CENSUS RELEASE REPORTS



A. POPULATION, DWELLINGS, AGE and SEX

B. AGRICULTURE

C. FAMILIES, HOUSEHOLDS, MARITAL STATUS and LANGUAGE

D. INCOME

E. HOUSING

F. IMMIGRATION and ETHNOCULTURAL DIVERSITY

G. EDUCATION, MOBILITY, MIGRATION

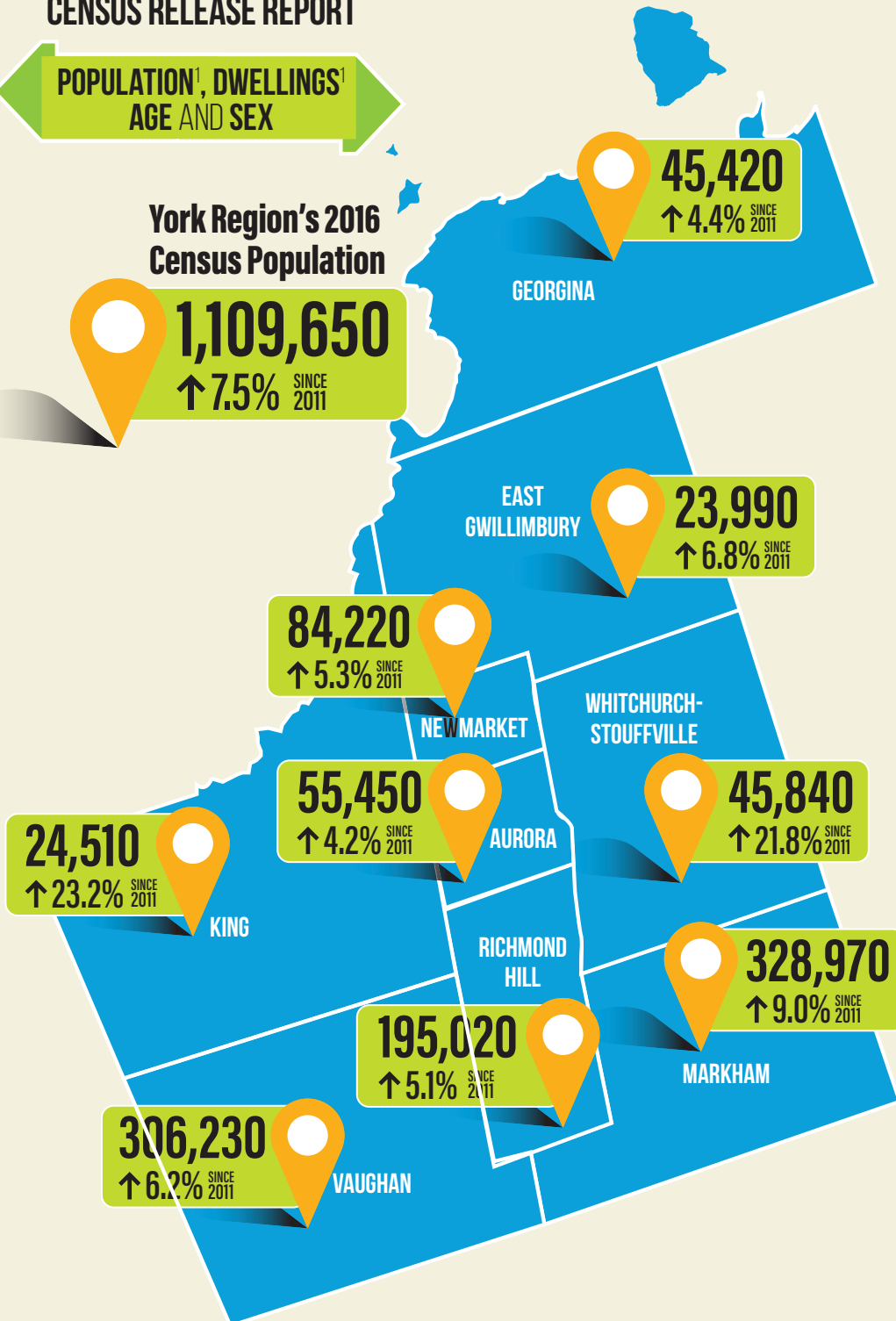
H. LABOUR and JOURNEY TO WORK

YORK REGION 2016 CENSUS POPULATION BY LOCAL MUNICIPALITY

POPULATION¹, DWELLINGS¹
AGE AND SEX

York Region's 2016 Census Population

1,109,650
↑ 7.5% SINCE 2011



York Region has grown by 77,400 people or 7.5 per cent since 2011 to a 2016 population of **1,109,650**

Seniors (65+) were the fastest growing age group between 2011 and 2016, **increasing by 34 per cent** or 40,975 people

Since 2011, the number of pre-school children in York Region **declined by 3 per cent** or 1,470 children

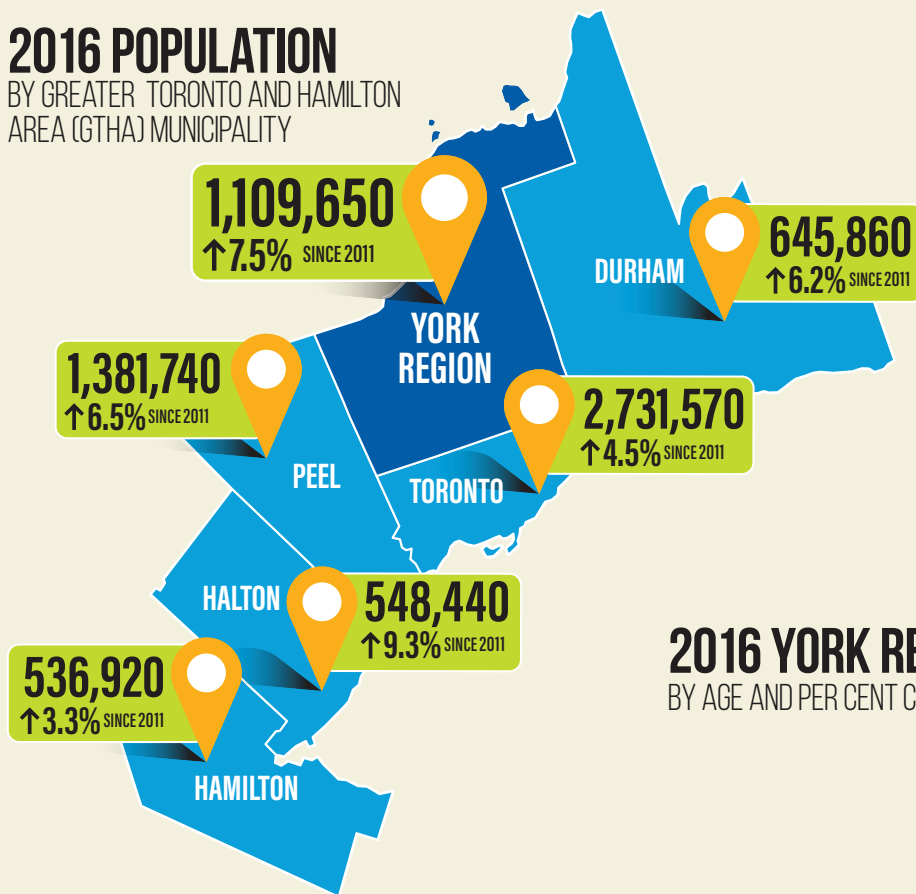
York Region added **33,537** new dwelling units between 2011 and 2016, second to Toronto in the Greater Toronto and Hamilton Area (GTHA)

Apartment units have been the fastest growing structure type since 2011, **increasing by 31 per cent** or 11,365 units

¹York Region Census Population and Dwelling Counts - Do not include the Census Subdivision of Georgina Island. All population figures do not include the Census Undercoverage. The Census net undercoverage population are those missed by the census. Totals may not add due to rounding.

2016 POPULATION

BY GREATER TORONTO AND HAMILTON AREA (GTHA) MUNICIPALITY



2016 YORK REGION POPULATION BY GENDER

In 2016 there were 95 men for every 100 women in York Region



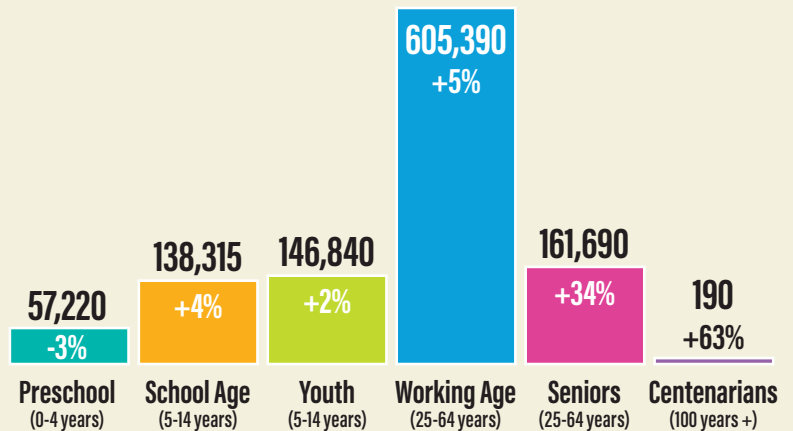
2016 AVERAGE AGE

IN CANADA, ONTARIO AND YORK REGION



2016 YORK REGION POPULATION BY AGE AND PER CENT CHANGE SINCE 2011

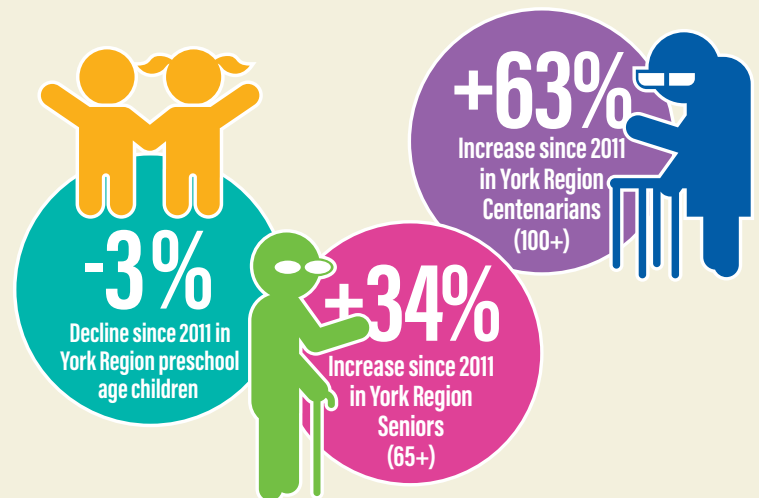
BY AGE AND PER CENT CHANGE SINCE 2011



YORK REGION LABOUR FORCE REPLACEMENT RATIO¹

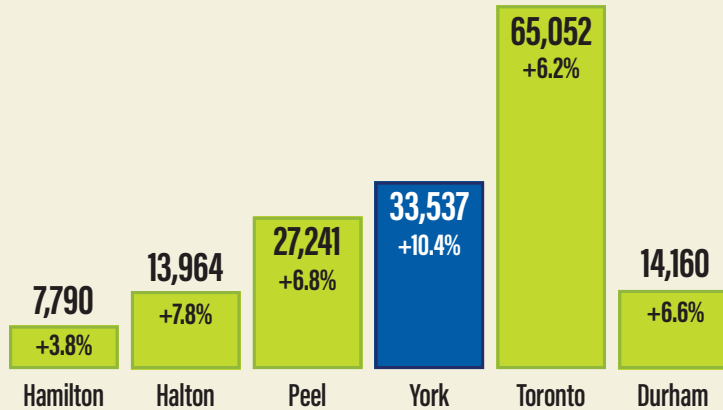


¹Labour Force Replacement Ratio - Refers to the number of people expected to enter the workforce (aged 15-24) compared to those expected to leave it (aged 55-64)



2011-2016 DWELLING UNIT² GROWTH

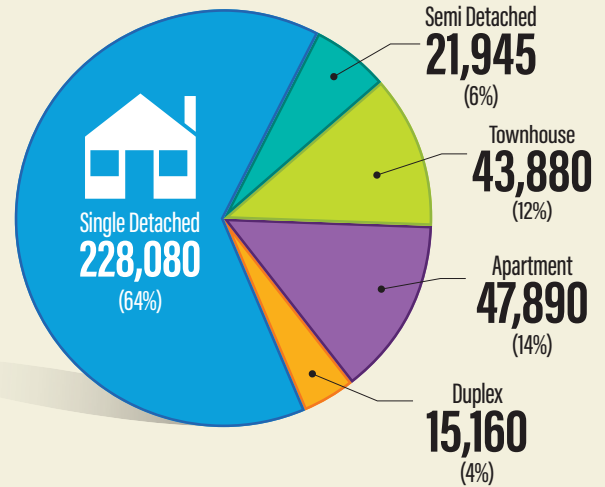
BY GREATER TORONTO AND HAMILTON AREA (GTHA) MUNICIPALITY



2016 YORK REGION HOUSEHOLDS

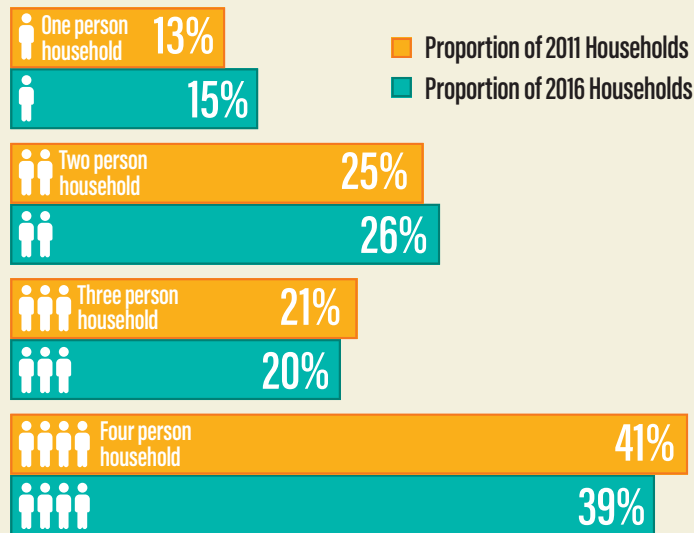
BY TYPE OF DWELLING

Single detached³ remained the predominant dwelling type



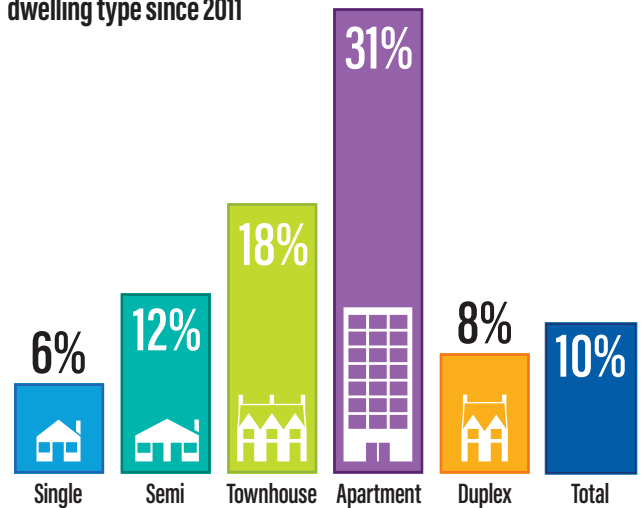
YORK REGION HOUSEHOLDS BY HOUSEHOLD SIZE

Proportion of one and two person households has increased since 2011

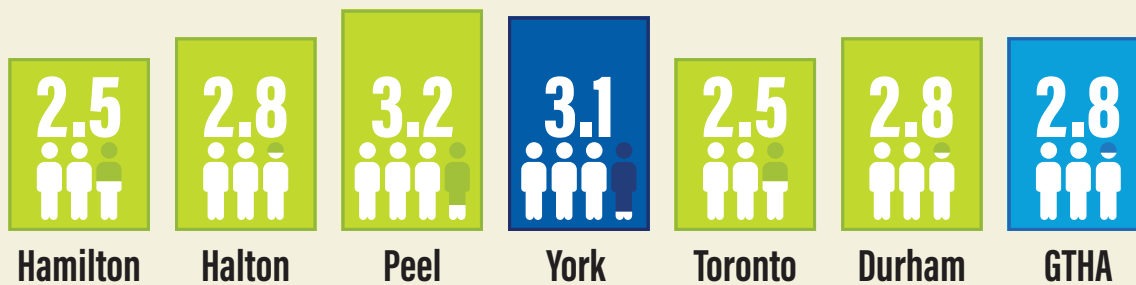


GROWTH RATE BY TYPE OF DWELLING

Apartments⁴ were the fastest growing dwelling type since 2011



AVERAGE HOUSEHOLD SIZE BY GTHA MUNICIPALITY



²Dwelling Unit - Refers to units that are occupied

³Single detached - Includes the following structural types of dwellings: single detached house, other single attached house, movable dwelling

⁴Apartment - Includes the following structural types of dwellings: apartment in a building fewer than 5 storeys and apartment in a building with 5 or more storeys

Duplex - Refers to an apartment or flat in a duplex

2016 HOUSING UNIT MIX BY LOCAL MUNICIPALITY

Municipality	2016 Housing Unit Mix										
	Total Households	Single Detached		Semi Detached		Townhouse		Apartment		Duplex	
		Units	% Share	Units	% Share	Units	% Share	Units	% Share	Units	% Share
Aurora	18,850	11,385	60%	1,395	8%	3,350	18%	2,100	11%	620	3%
East Gwillimbury	8,080	6,720	83%	225	3%	535	7%	280	3%	320	4%
Georgina	16,820	13,985	83%	435	3%	740	4%	1,085	7%	575	3%
King	8,145	7,095	87%	110	2%	340	4%	500	6%	100	1%
Markham	102,675	60,905	59%	6,515	6%	13,970	14%	15,410	15%	5,875	6%
Newmarket	28,665	17,305	60%	2,215	8%	3,550	12%	3,620	13%	1,975	7%
Richmond Hill	64,115	37,700	59%	2,555	4%	9,670	15%	12,245	19%	1,945	3%
Vaughan	94,250	61,250	65%	7,685	8%	10,175	11%	11,795	12%	3,345	4%
Whitchurch-Stouffville	15,355	11,735	76%	810	5%	1,550	10%	855	6%	405	3%
York Region	356,955	228,080	64%	21,945	6%	43,880	12%	47,890	14%	15,160	4%

2016 POPULATION BY AGE BY LOCAL MUNICIPALITY AND PER CENT CHANGE SINCE 2011

Municipality	Resident Age									
	Age 0 to 4 years		Age 5 to 14 Years		Age 15 to 24 Years		Age 25 to 64 Years		Age 65 Years +	
	2016 Population	% Change Since 2011	2016 Population	% Change Since 2011	2016 Population	% Change Since 2011	2016 Population	% Change Since 2011	2016 Population	% Change Since 2011
Aurora	2,725	-8%	7,125	-4%	7,995	0%	30,355	4%	7,240	28%
East Gwillimbury	1,275	14%	2,840	7%	3,000	-7%	13,400	5%	3,480	29%
Georgina	2,510	5%	4,995	-6%	5,615	-6%	25,615	5%	6,680	26%
King	1,250	42%	3,190	26%	3,245	10%	13,065	23%	3,760	30%
Markham	17,085	4%	38,310	6%	42,550	2%	181,115	6%	49,915	35%
Newmarket	4,335	-1%	10,500	0%	11,935	0%	45,910	4%	11,545	30%
Richmond Hill	8,555	-13%	24,010	1%	26,050	1%	107,955	3%	28,460	36%
Vaughan	16,265	-10%	41,255	2%	41,565	5%	163,685	4%	43,470	35%
Whitchurch-Stouffville	3,225	21%	6,090	32%	4,895	16%	24,310	17%	7,320	38%
York Region	57,225	-3%	138,315	4%	146,850	2%	605,410	5%	161,870	34%

For questions, please contact Long Range Planning at paul.bottomley@york.ca or 1-877-464-9675 ext. 71530

For accessible formats or communication support, please contact Corporate Communications at 1-877-464-9675 ext. 71234

FACTS AT A GLANCE

TOTAL GROSS FARM RECEIPTS AND FARM AREA BY LOCAL MUNICIPALITY

\$ 2016 Total Gross Farm Receipts (\$)
 2016 Total Farmland Area (Acres)

% Change in Gross Farm Receipts 2011 to 2016

% Change in Farmland Area 2011 to 2016

\$ 6,997,002¹ -14%
 4,076 acres -27%

GEORGINA
 \$ 20,709,539 -23%
 24,096 acres -29%

EAST GWILLIMBURY
 \$ 96,797,280 40%
 24,670 acres -26%

WHITCHURCH-STOUFFVILLE
 \$ 33,724,735 -1%
 17,127 acres -25%

KING
 \$ 83,898,106 17%
 40,250 acres 5%

MARKHAM
 \$ 33,164,453 28%
 24,782 acres 112%

VAUGHAN
 \$ 26,171,283 7%
 7,584 acres 4%

NEWMARKET
 AURORA
 RICHMOND HILL

York Region had the second highest gross farm receipts per acre in the Golden Horseshoe² at **\$2,114** per acre

From 2011 to 2016, York Region recorded a decrease of **116 farms** (14 per cent) and **10,974 Acres** (7 per cent) of farmland

Farmland accounted for **32 per cent** of York Region's land area in 2016, down from 43 per cent in 1991

71 per cent of farms in York Region are less than 130 acres in size

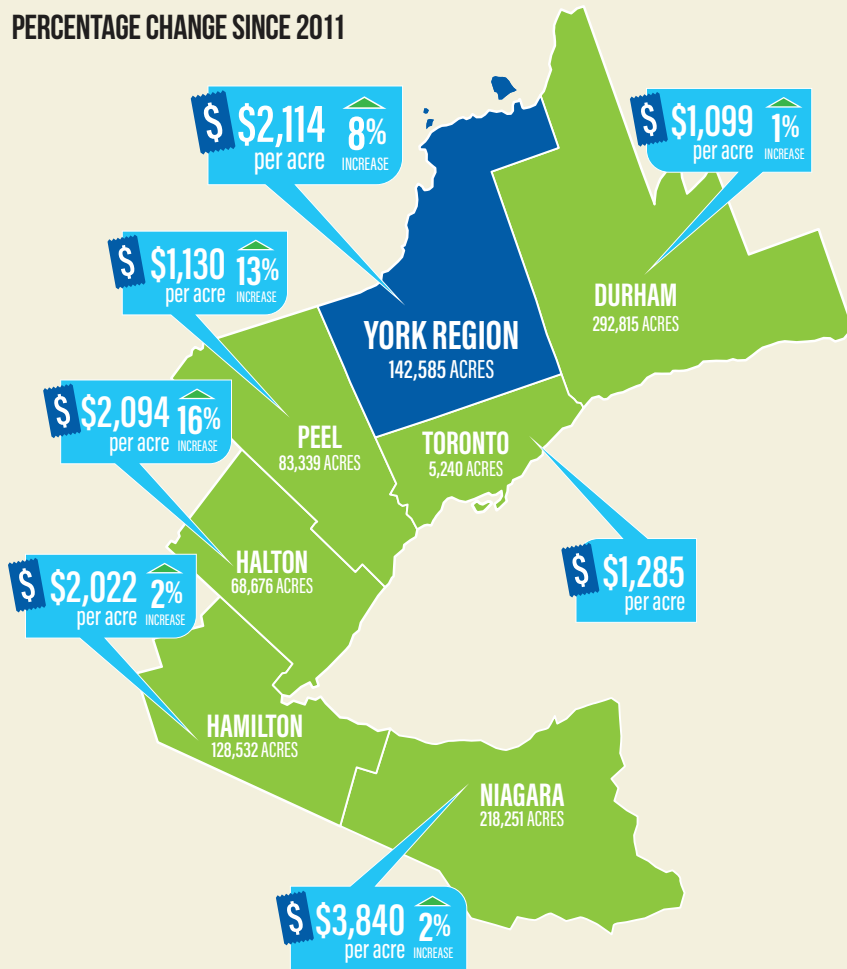
61 per cent of farm operators in York Region are over the age of 55

¹ For the 2016 Census of Agriculture, the Towns of Aurora, Newmarket and Richmond Hill are reported as one consolidated Census Subdivision

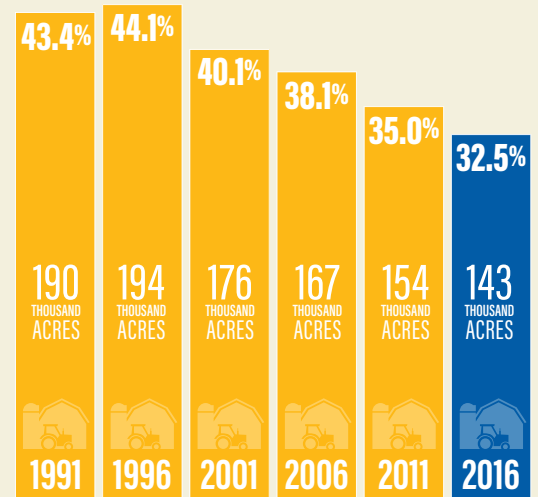
² Golden Horseshoe in this bulletin refers to the municipalities that make up the Golden Horseshoe Food and Farming Alliance which includes: Durham, York, Toronto, Peel, Halton, Hamilton and Niagara.

2016 GROSS FARM RECEIPTS PER ACRE ACROSS THE GOLDEN HORSESHOE

PERCENTAGE CHANGE SINCE 2011

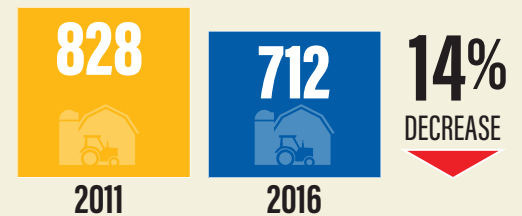


YORK REGION FARM AREA BY CENSUS YEAR



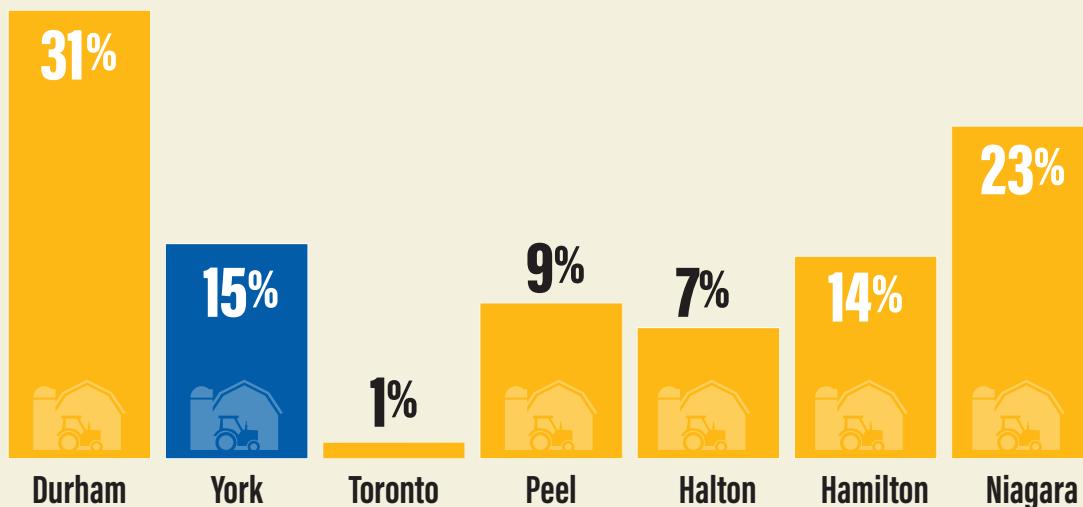
Per cent of Total York Region Land Area

NUMBER OF FARMS IN YORK REGION

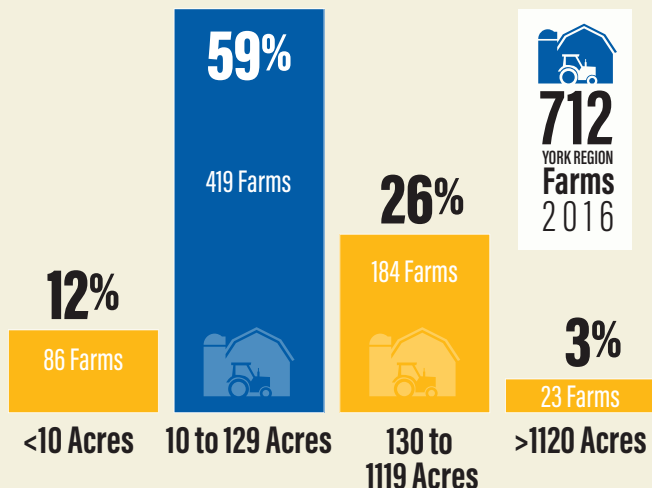


15 PER CENT OF TOTAL FARMLANDS IN THE GOLDEN HORSESHOE ARE IN YORK REGION

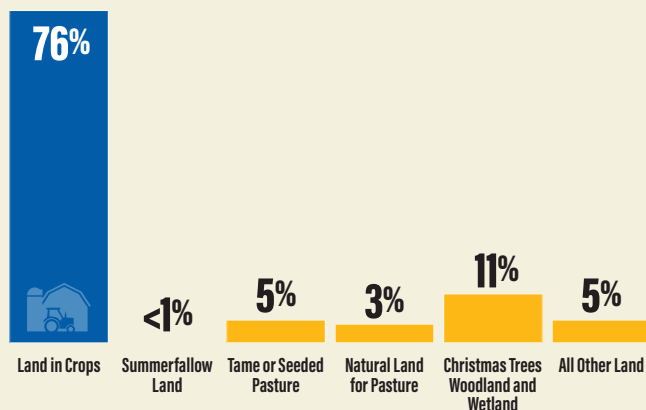
DISTRIBUTION OF FARMLAND ACROSS THE GOLDEN HORSESHOE



YORK REGION FARMS BY SIZE

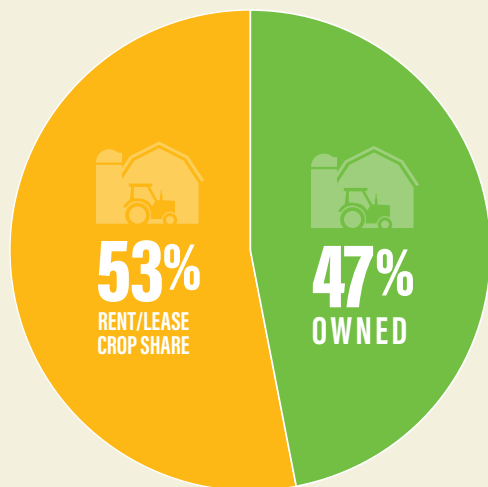


FARMLAND USES IN YORK REGION

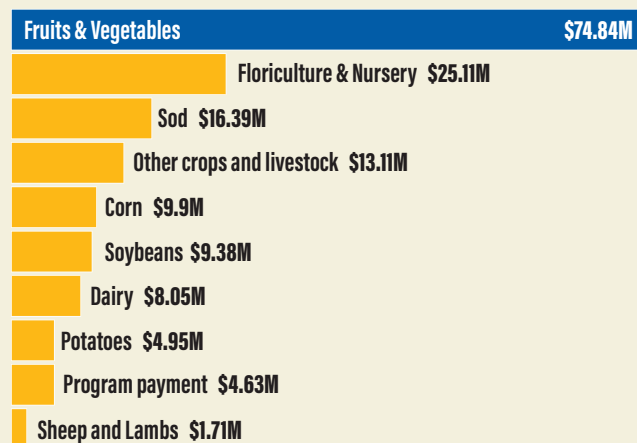


53 PER CENT OF ALL YORK REGION FARM LAND IS RENTED

YORK REGION FARMLAND TENURE

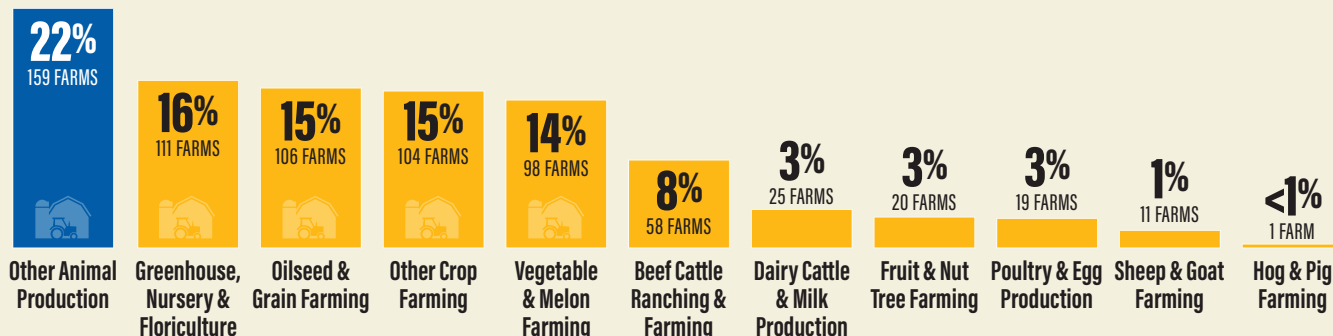


VALUE (\$) OF TOP COMMODITIES IN YORK REGION



Source: 2016 Census of Agriculture and Strategic Policy Branch, OMAFRA

YORK REGION FARMS BY INDUSTRY

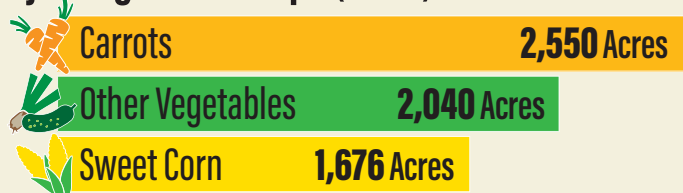


2016 YORK REGION TOP THREE MAJOR VEGETABLE, FRUITS AND FIELD CROPS

Major Fruit Crops (acres)



Major Vegetable Crops (acres)

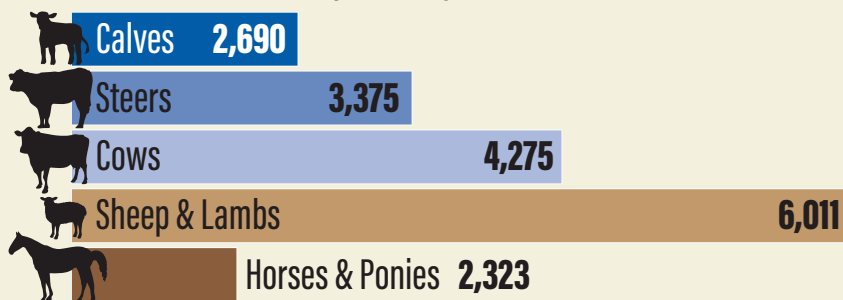


Major Field Crops (acres)



2016 YORK REGION LIVESTOCK AND POULTRY INVENTORIES

Livestock Inventories (number)



Poultry Inventories (number)



DID YOU KNOW?

- In 2016, 51 farms in York Region (7 per cent) reported using solar panels or wind turbines to generate renewable energy
- In 2016, 140 farms in York Region (20 per cent) reported selling directly to consumers, most of them selling unprocessed agricultural produces, mainly through farm gate sales, stands and kiosks
- 61 per cent of farm operators in York Region were 55 years of age and over in 2016
- York Region produced 375,257 dozens of eggs in 2016, an increase of 22 per cent from 2011

Gross Farm Receipts are defined as farm cash receipts measuring the gross revenue of farm businesses in 2016 dollars including sales of crops, livestock products and program payments.

For questions, please contact Long Range Planning at paul.bottomley@york.ca or 1-877-464-9675 ext. 71530
For accessible formats or communication support, please contact Corporate Communications at 1-877-464-9675 ext. 71234

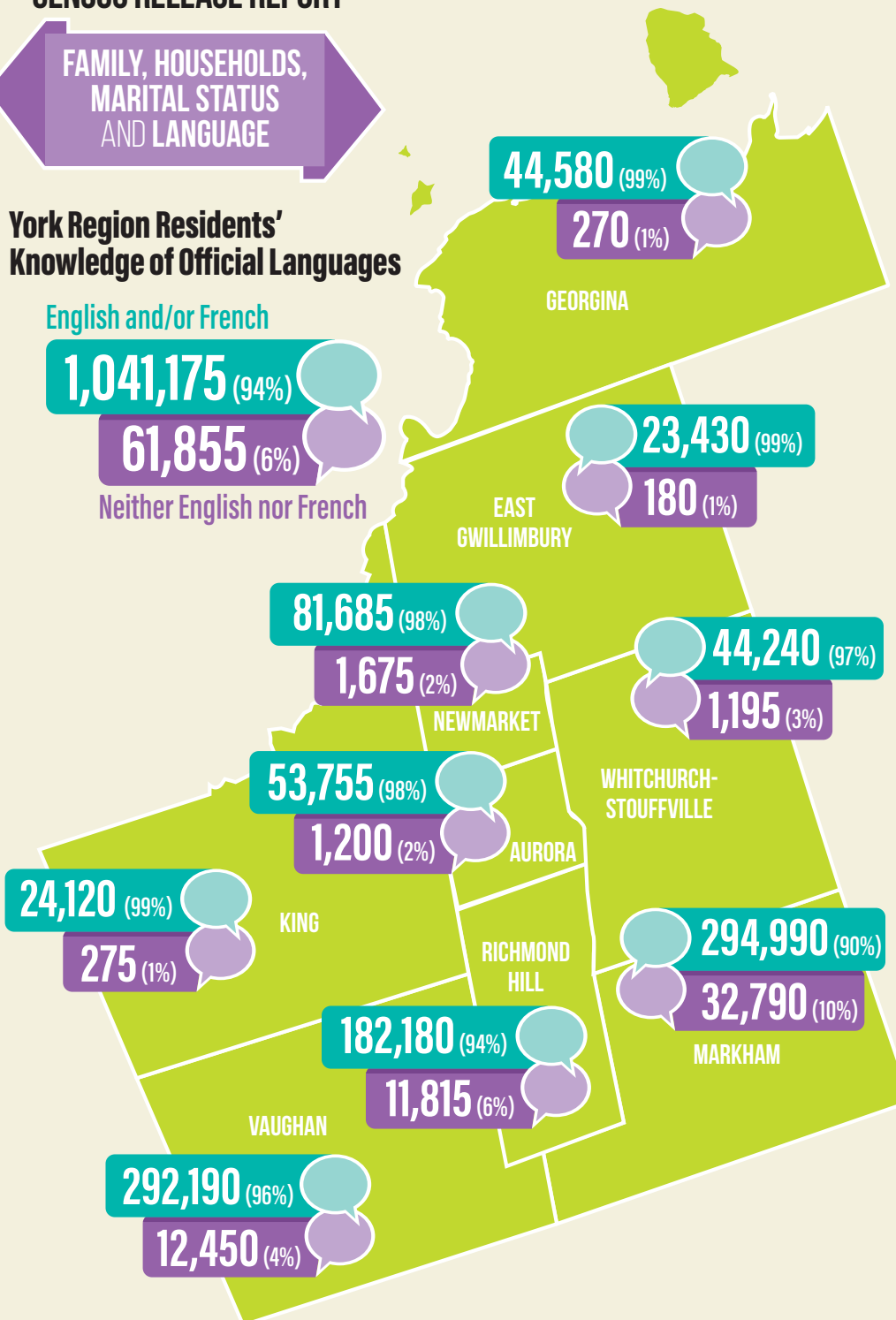
York Region Residents' Knowledge of Official Languages

English and/or French

1,041,175 (94%)

61,855 (6%)

Neither English nor French



FACTS AT A GLANCE

YORK REGION KNOWLEDGE OF OFFICIAL LANGUAGES

BY LOCAL MUNICIPALITY

Since 2011, the number of people living alone in York Region **increased by 24 per cent** to 52,460 people in 2016, outpacing growth in all other family types

Multiple-family households¹ **increased by 15 per cent** or 2,650 households between 2011 and 2016

From 2011 to 2016, the number of lone-parent families **increased by 13 per cent** to 43,915 in 2016

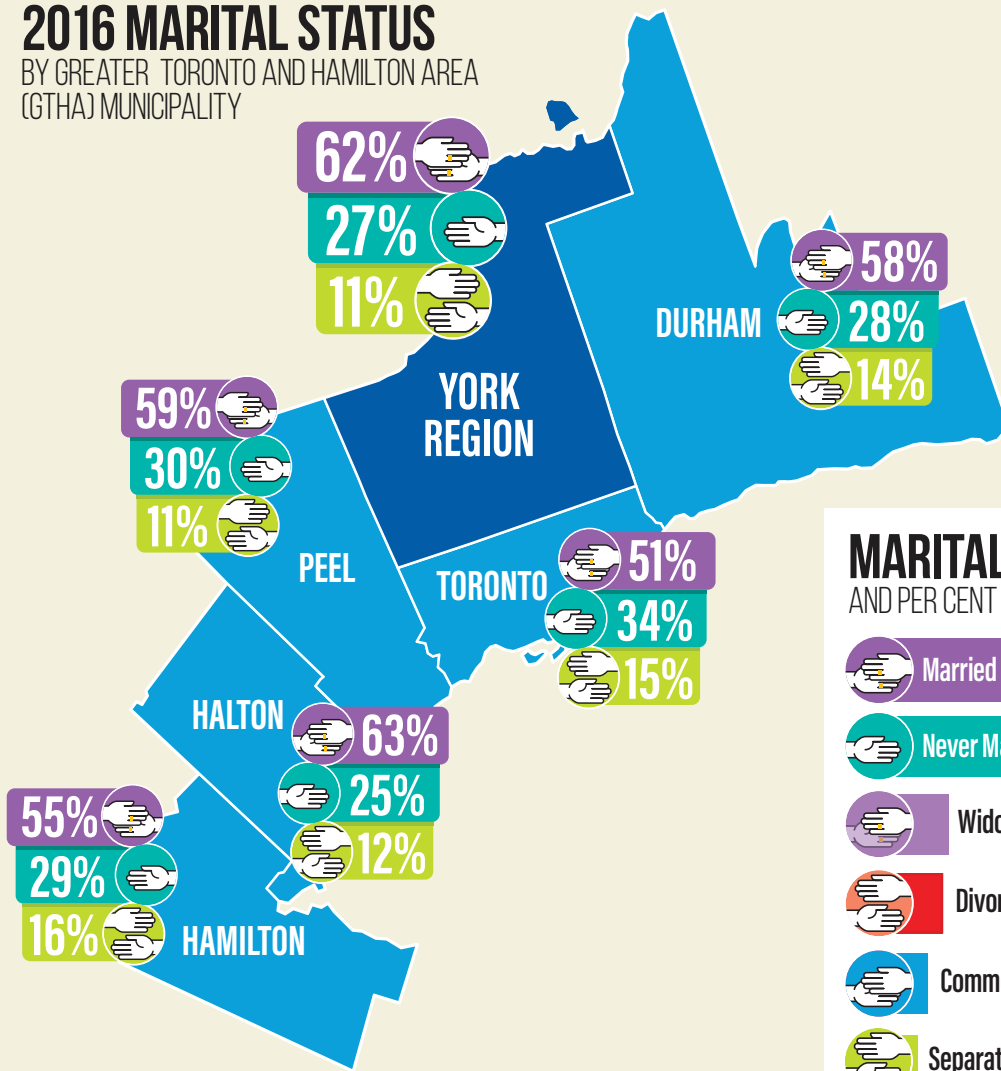
31 per cent (316,170 people) of York Region residents reported speaking a non-official language most often at home

Over **120 different languages** were spoken in York Region in 2016

¹ Multiple-family households - Refers to households in which two or more census families occupy the same private dwelling
Numbers may not add up due to rounding

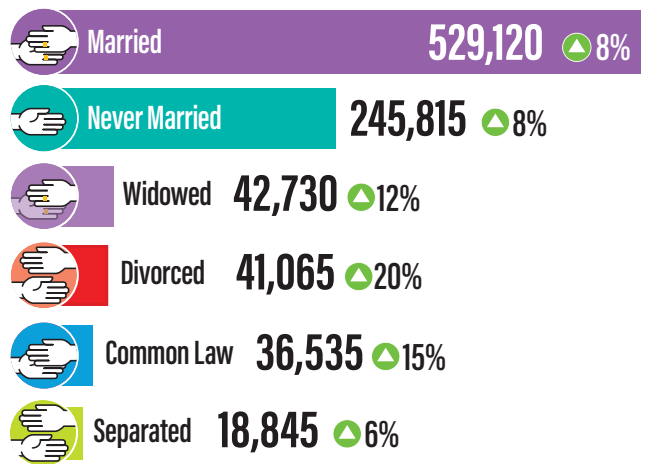
2016 MARITAL STATUS

BY GREATER TORONTO AND HAMILTON AREA (GTHA) MUNICIPALITY



MARITAL STATUS IN YORK REGION

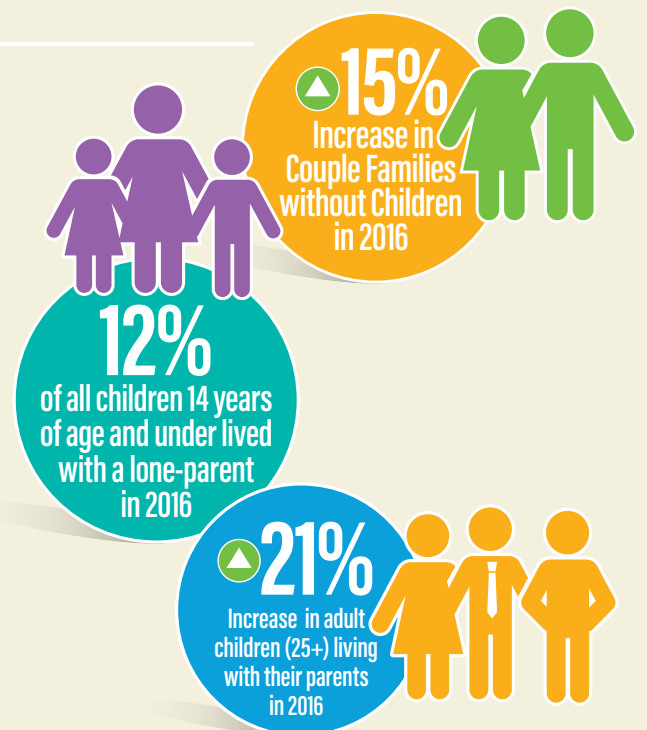
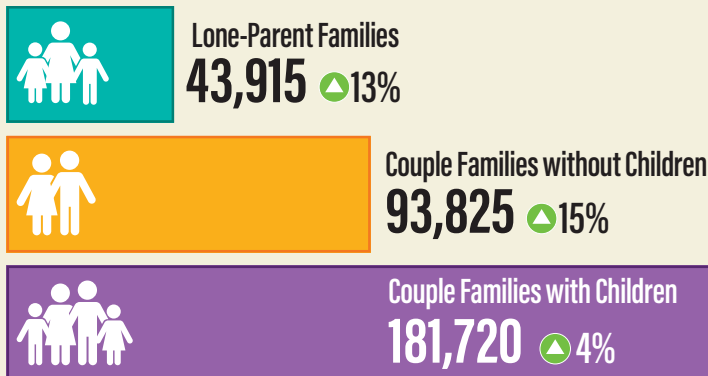
AND PER CENT CHANGE SINCE 2011 FOR POPULATION AGED 15+



2016 YORK REGION FAMILIES

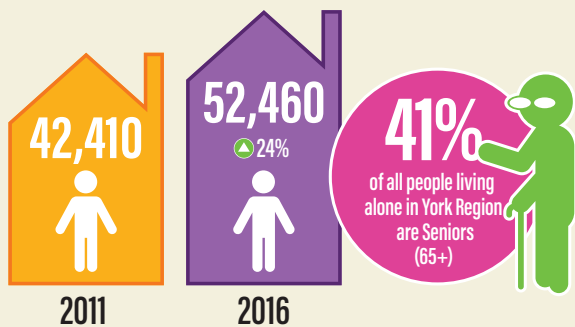
BY CENSUS FAMILY TYPE AND PER CENT CHANGE SINCE 2011

Couple families (married/common law) with children remain the dominant family type in York Region



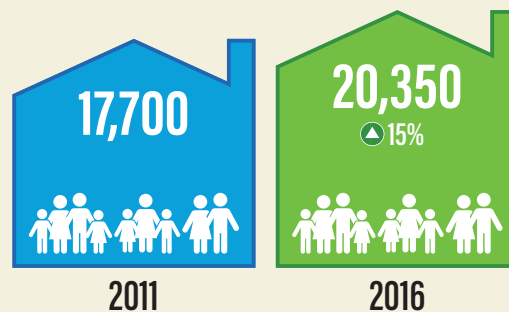
YORK REGION ONE PERSON HOUSEHOLDS

INCREASED BY 24 PER CENT SINCE 2011



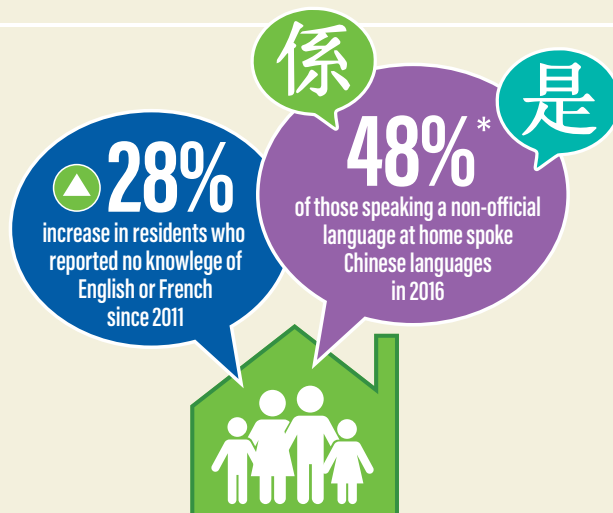
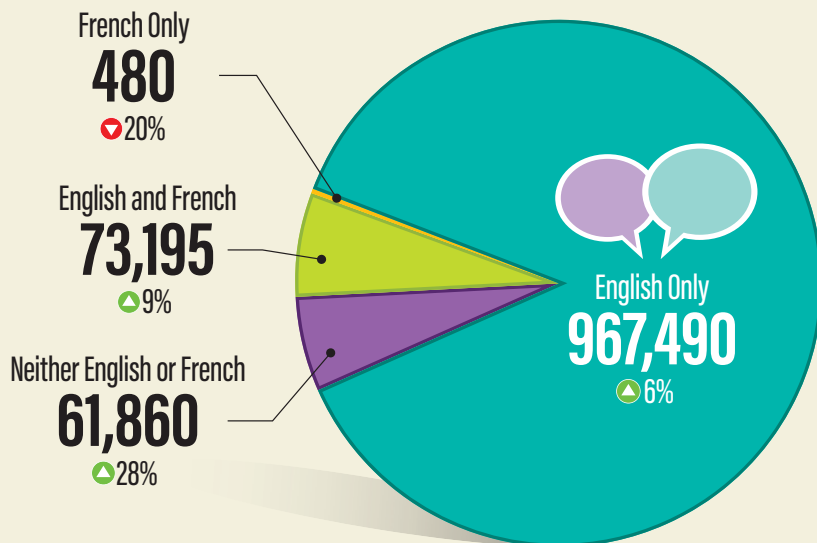
YORK REGION MULTIPLE FAMILY HOUSEHOLDS

INCREASED BY 15 PER CENT SINCE 2011



2016 KNOWLEDGE OF OFFICIAL LANGUAGES

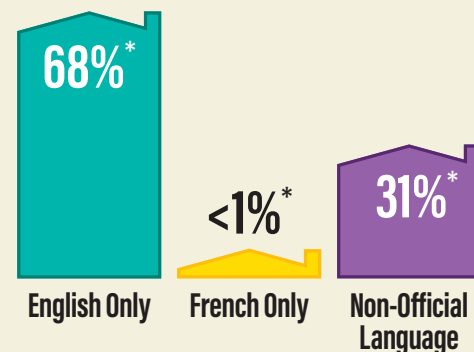
IN YORK REGION



HOUSEHOLD LANGUAGES

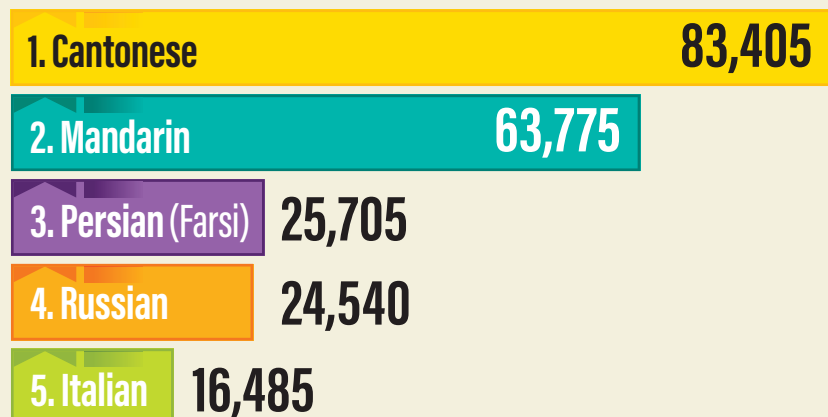
IN YORK REGION

68 per cent of all York Region households speak English most often at home*



NON-OFFICIAL LANGUAGES SPOKEN AT HOME

MOST OFTEN* IN YORK REGION



*Numbers based on the total number of respondents who provided a single response at the time of data collection

HOUSEHOLD COMPOSITION BY LOCAL MUNICIPALITY

Municipality	Household Composition					
	Multiple Family Households			One Person Households		
	2011	2016	% Change since 2011	2011	2016	% Change since 2011
Aurora	405	555	37%	2,740	3,085	13%
East Gwillimbury	240	270	13%	1,010	1,120	11%
Georgina	450	575	28%	3,140	3,520	12%
King	180	290	61%	965	1,225	27%
Markham	7,305	8,160	12%	10,225	13,790	35%
Newmarket	810	1,060	31%	5,015	5,120	2%
Richmond Hill	3,150	3,520	12%	8,110	10,130	25%
Vaughan	4,740	5,310	12%	9,160	12,155	33%
Whitchurch-Stouffville	425	605	42%	2,040	2,320	14%
York Region	17,700	20,350	15%	42,410	52,460	24%

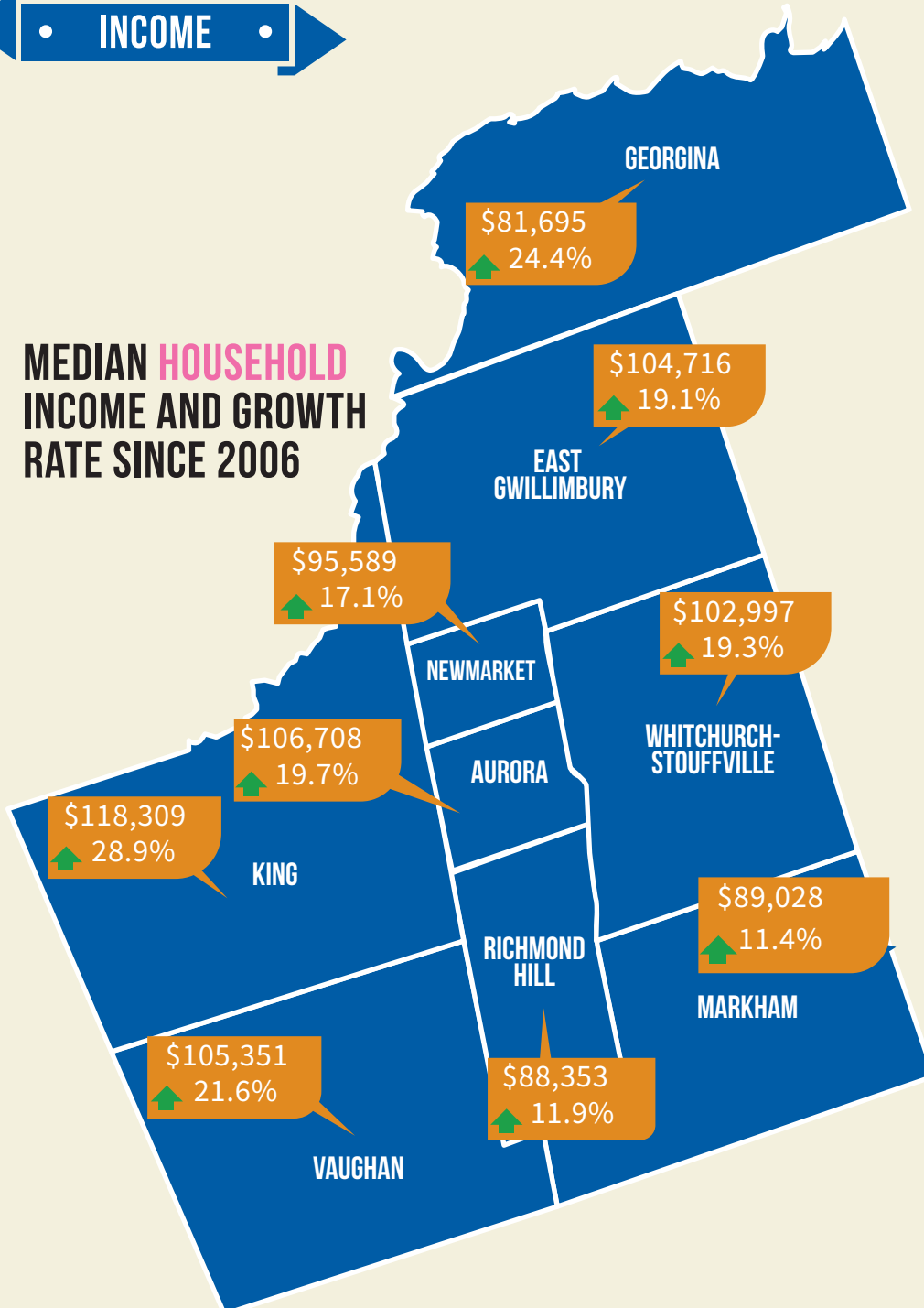
2016 YORK REGION FAMILIES BY CENSUS FAMILY TYPE AND LOCAL MUNICIPALITY

Municipality	Total Census Families	Couples with Children		Couples without Children		Lone-Parent Families	
		Families	% Share	Families	% Share	Families	% Share
Aurora	15,960	8,905	56%	4,730	30%	2,330	14%
East Gwillimbury	7,085	3,665	52%	2,605	37%	815	11%
Georgina	13,385	5,945	44%	5,050	38%	2,395	18%
King	7,090	3,960	56%	2,430	34%	700	10%
Markham	95,480	54,405	57%	27,935	29%	13,140	14%
Newmarket	23,945	12,675	53%	7,135	30%	4,135	17%
Richmond Hill	56,545	32,785	58%	15,970	28%	7,790	14%
Vaughan	86,550	52,035	60%	23,350	27%	11,165	13%
Whitchurch-Stouffville	13,420	7,350	55%	4,625	34%	1,440	11%
York Region	319,460	181,720	57%	93,825	29%	43,915	14%

For questions, please contact Long Range Planning at paul.bottomley@york.ca or 1-877-464-9675 ext. 71530

For accessible formats or communication support, please contact Corporate Communications at 1-877-464-9675 ext. 71234

MEDIAN HOUSEHOLD INCOME AND GROWTH RATE SINCE 2006



Over a quarter of private households in York Region have an income of over **\$150,000**

Five of York Region's nine local municipalities are in the top 20 for highest household income in Ontario

York Region has the **second highest** median household income in the Greater Toronto and Hamilton Area (GTHA)

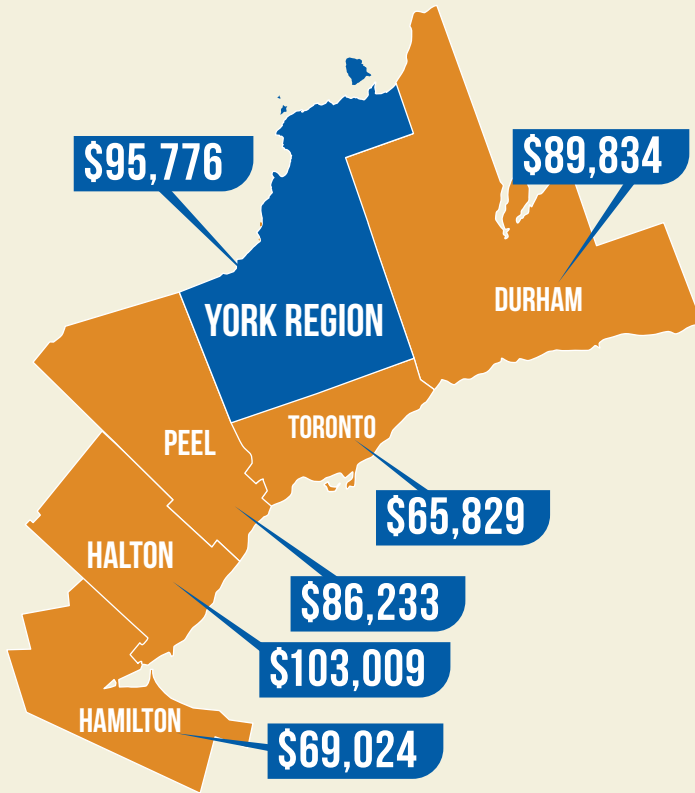
The median household income in York Region is **\$95,776**, an increase of 16.9 per cent since 2006

Income data for the 2016 Census Income release has been revised to use income information solely from the Canada Revenue Agency.

Caution should be used when comparing 2016 Census income data to the 2011 Census (NHS) income data.

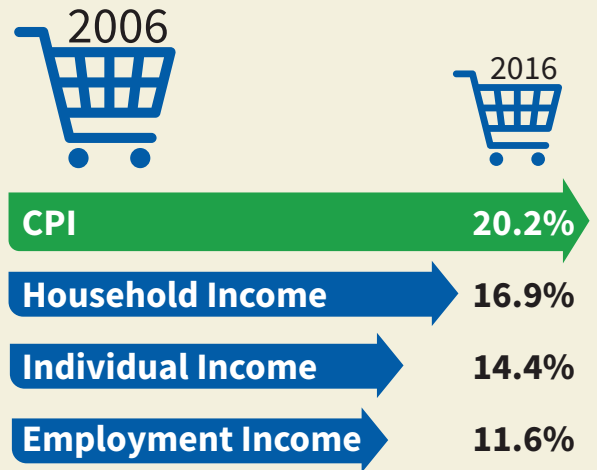
The income data used for the 2016 Census is based on income information collected in 2015.

MEDIAN HOUSEHOLD INCOME IN THE GTHA



INCOME AND COST OF LIVING SINCE 2006

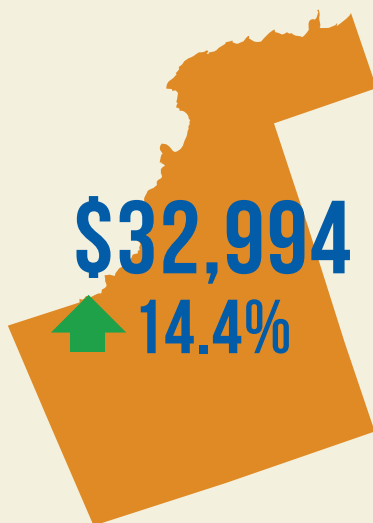
Since 2006, the Consumer Price Index (CPI) has grown faster than York Region's median household, individual and employment income.



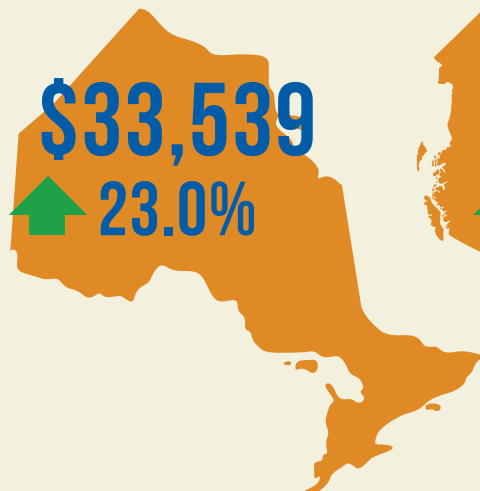
The Ontario inflation rate was used in the Consumer Price Index (CPI) calculation.

YORK REGION MEDIAN INDIVIDUAL INCOME COMPARED TO ONTARIO AND CANADA

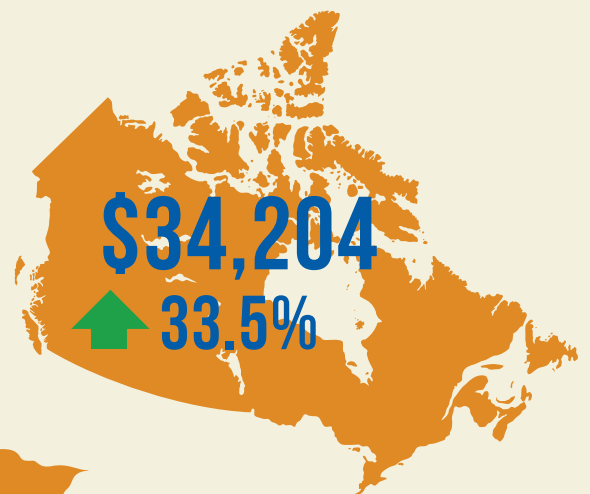
YORK REGION



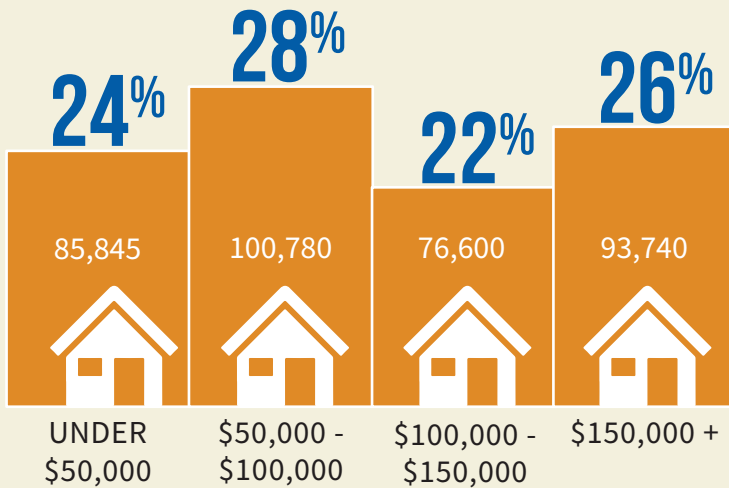
ONTARIO



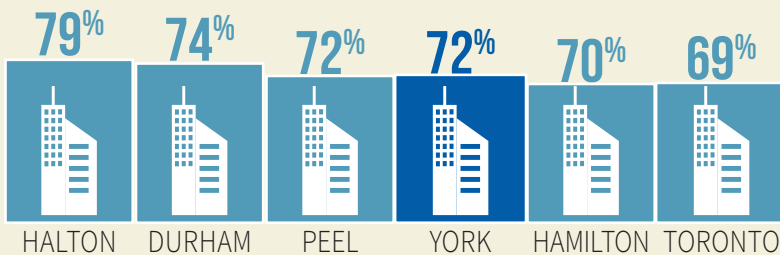
CANADA



DISTRIBUTION OF YORK REGION HOUSEHOLDS BY INCOME GROUP



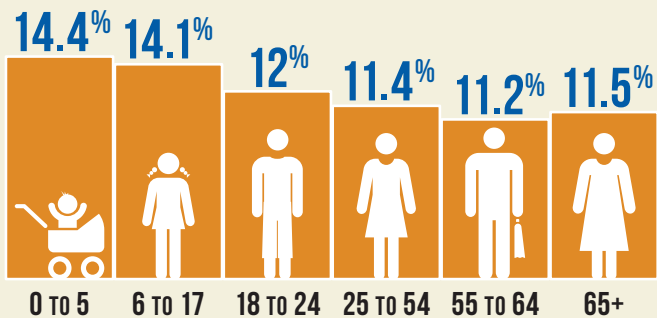
RESIDENTS REPORTING INCOME FROM EMPLOYMENT IN THE GTHA



72% of York Region residents reported income through employment

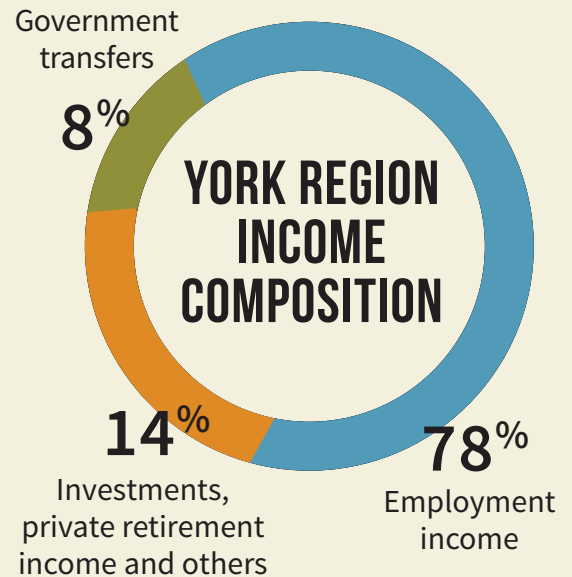
67% of York Region residents reported income from government transfers

PROPORTION OF POPULATION IN LOW INCOME HOUSEHOLDS

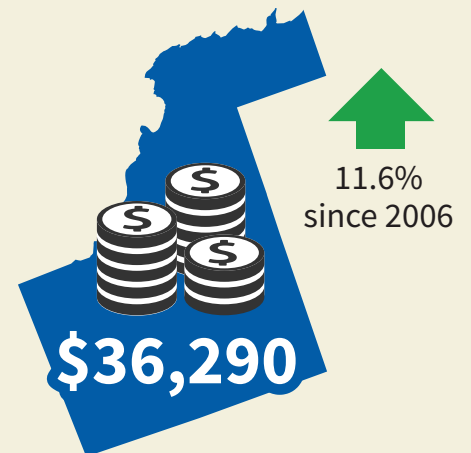


Statistics Canada has revised the methodology used to calculate annual after-tax Low Income Measure (LIM-AT) for the 2016 Census. Please refer to the back page for more details.*

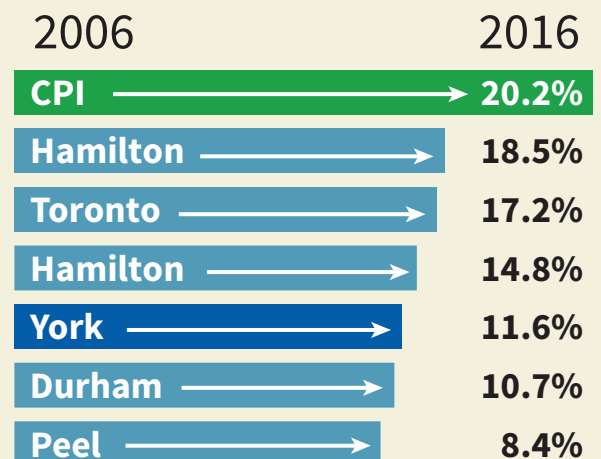
The income data reported represents people aged 15 and over.



MEDIAN EMPLOYMENT INCOME IN YORK REGION



EMPLOYMENT INCOME AND COST OF LIVING SINCE 2006



DEFINITIONS

Median household income is the amount that divides the income of all households, sorted from lowest to highest, into two halves.

Median individual income is the amount that divides the income of all people 15 years and over, sorted from lowest to highest, into two halves.

Median employment income is the amount that divides the employment or self-employment income of people 15 years and over, sorted from lowest to highest, into two halves.

Government transfers are all cash benefits received from federal, provincial, territorial or municipal governments.

YORK REGION HOUSEHOLDS BY INCOME GROUP

Income	York Region		Aurora		East Gwillimbury		Georgina		King	
	Household	Share	Household	Share	Household	Share	Household	Share	Household	Share
Under \$10,000	8,935	3%	315	2%	105	1%	365	2%	135	2%
\$10,000 to \$19,999	13,275	4%	570	3%	180	2%	810	5%	210	3%
\$20,000 to \$29,999	19,790	6%	860	5%	355	4%	1,135	7%	360	4%
\$30,000 to \$39,999	22,060	6%	975	5%	405	5%	1,245	7%	390	5%
\$40,000 to \$49,999	21,785	6%	970	5%	435	5%	1,160	7%	380	5%
\$50,000 to \$59,999	21,200	6%	1,000	5%	470	6%	1,215	7%	365	4%
\$60,000 to \$69,999	20,700	6%	990	5%	430	5%	1,165	7%	420	5%
\$70,000 to \$79,999	20,190	6%	1,010	5%	480	6%	1,140	7%	380	5%
\$80,000 to \$89,999	19,525	5%	995	5%	465	6%	1,140	7%	390	5%
\$90,000 to \$99,999	19,165	5%	1,035	5%	500	6%	1,090	6%	385	5%
\$100,000 and over	170,340	48%	10,125	54%	4,255	53%	6,350	38%	4,740	58%
Total	356,965	100%	18,855	100%	8,080	100%	16,820	100%	8,145	100%

Income	Markham		Newmarket		Richmond Hill		Vaughan		Whitchurch-Stouffville	
	Household	Share	Household	Share	Household	Share	Household	Share	Household	Share
Under \$10,000	3,390	3%	530	2%	2,320	4%	1,550	2%	235	2%
\$10,000 to \$19,999	4,265	4%	1,140	4%	3,175	5%	2,525	3%	405	3%
\$20,000 to \$29,999	6,015	6%	1,595	6%	4,380	7%	4,465	5%	635	4%
\$30,000 to \$39,999	6,860	7%	1,700	6%	4,430	7%	5,285	6%	760	5%
\$40,000 to \$49,999	6,800	7%	1,735	6%	4,095	6%	5,380	6%	820	5%
\$50,000 to \$59,999	6,375	6%	1,705	6%	3,925	6%	5,235	6%	905	6%
\$60,000 to \$69,999	6,370	6%	1,760	6%	3,505	5%	5,205	6%	845	6%
\$70,000 to \$79,999	6,075	6%	1,615	6%	3,510	5%	5,025	5%	955	6%
\$80,000 to \$89,999	5,745	6%	1,665	6%	3,235	5%	4,950	5%	940	6%
\$90,000 to \$99,999	5,545	5%	1,585	6%	3,190	5%	4,945	5%	885	6%
\$100,000 and over	45,225	44%	13,640	48%	28,345	44%	49,700	53%	7,965	52%
Total	102,675	100%	28,675	100%	64,115	100%	94,255	100%	15,355	100%

Low Income Measure After-Tax (LIM-AT) is used to identify people who are living with low income. The 2016 Census uses a different methodology to calculate LIM-AT than the Taxfilers Database. Data users should be aware of these differences when comparing information from different datasets.

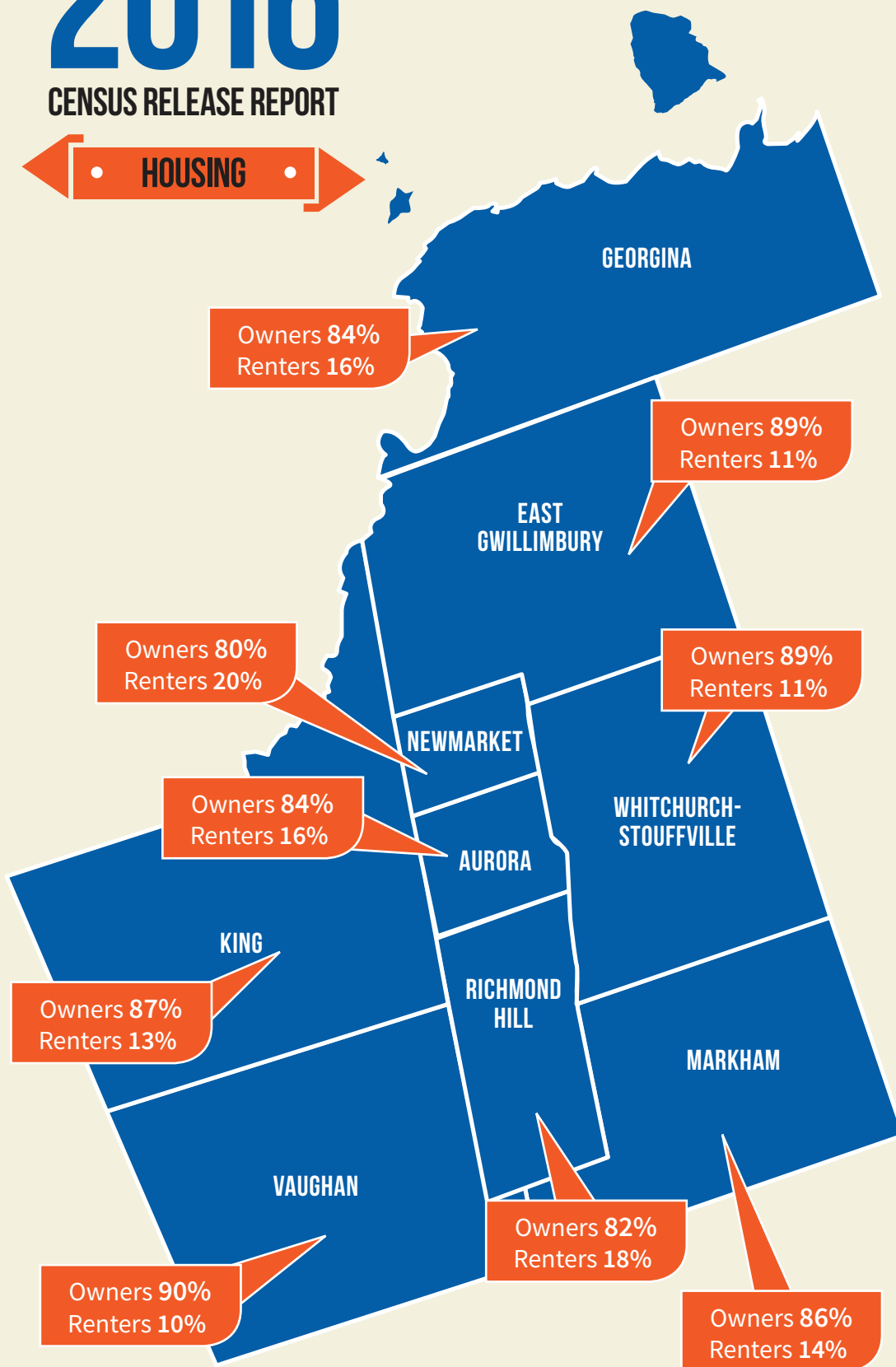
For questions, please contact Long Range Planning at paul.bottomley@york.ca or 1-877-464-9675 ext. 71530

For accessible formats or communication support, please contact Corporate Communications at 1-877-464-9675 ext. 71234

HOUSING

FACTS AT A GLANCE

HOUSING IN YORK REGION



86 per cent of York Region households are owned - the highest in the Greater Toronto and Hamilton Area (GTHA)

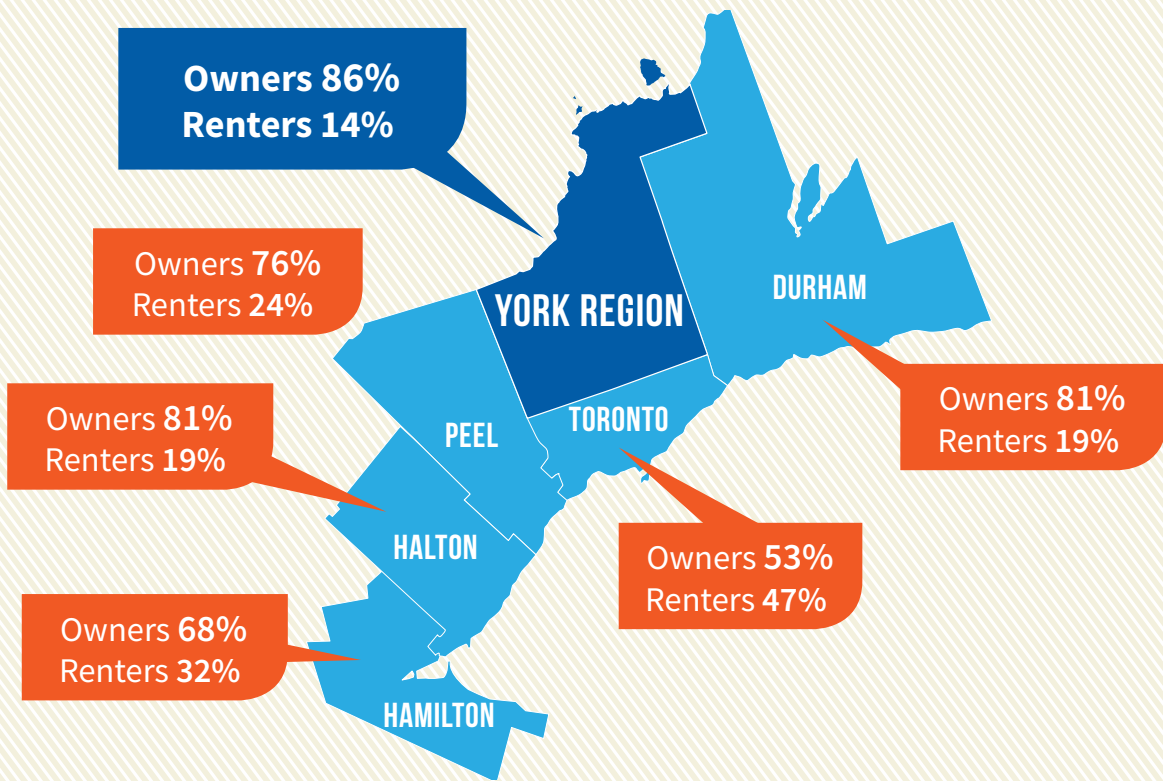
Since 2006, the proportion of renter households in York Region grew by **2.5 per cent** - the largest increase in the GTHA

Since 2006, the median monthly housing cost for rented dwellings increased by **46 per cent** compared to 17 per cent growth in household income

52 per cent of renter households in York Region are spending 30 per cent or more on housing - the highest in the GTHA

37 per cent of owner households in York Region are mortgage free (46 per cent of these are owned by seniors aged 65+)

HOUSING IN THE GTHA



SPENDING ON HOUSING COSTS

Proportion of households spending 30 per cent or more of income on housing costs

Municipality	Owners	Renters
Durham	20%	48%
York	28%	52%
Peel	28%	45%
Toronto	27%	47%
Halton	19%	45%
Hamilton	17%	45%

The Canada Mortgage and Housing Corporation considers housing to be affordable when a household spends less than 30% of its pre-tax income on adequate shelter.

12.5%

of renter households are subsidized in York Region



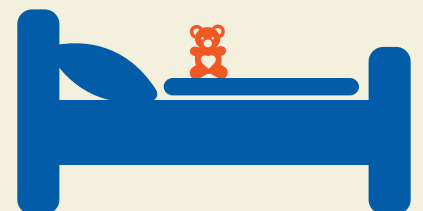
3%

of occupied dwellings in York Region are in need of major repairs

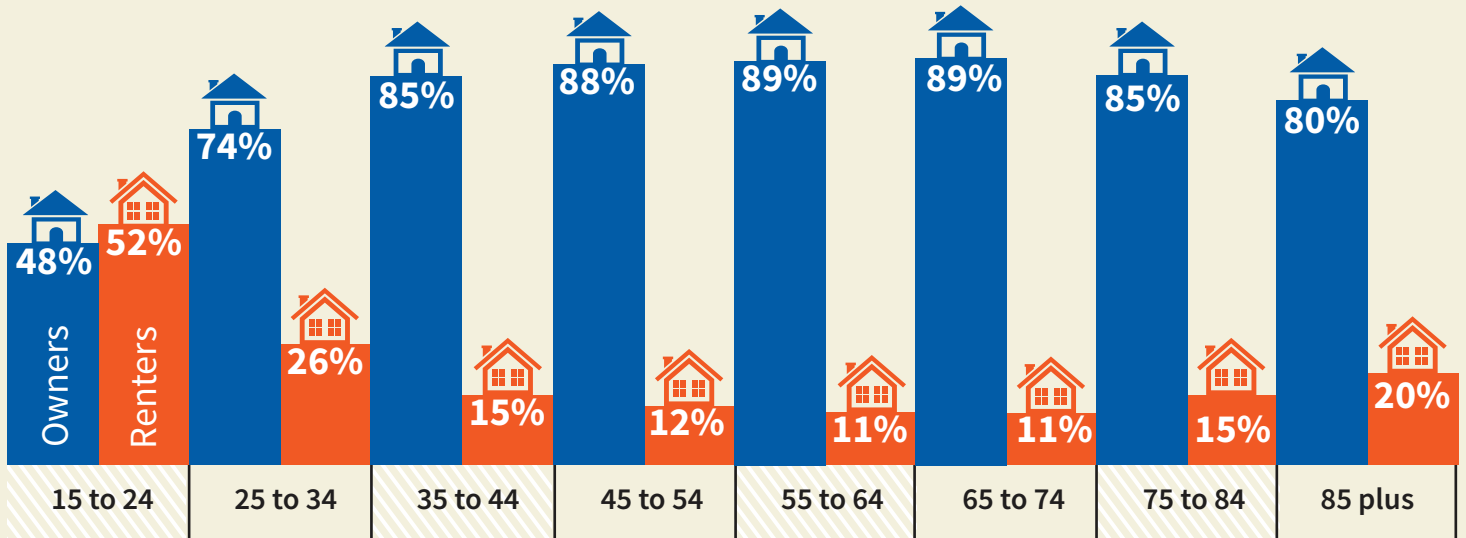


95%

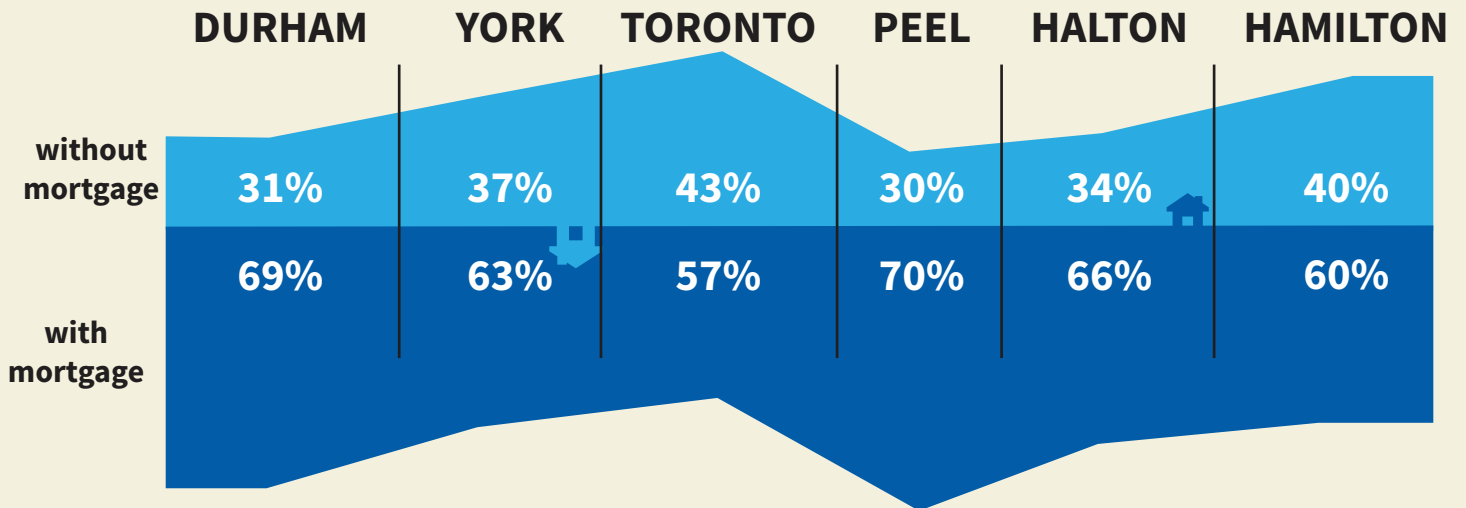
of York Region dwellings are of suitable size for the composition of the household



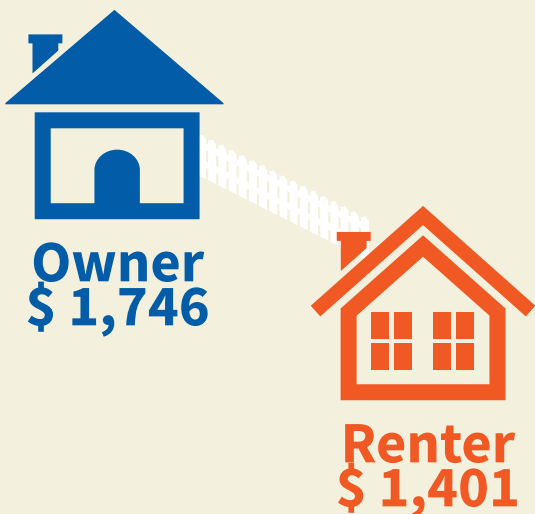
HOUSING BY AGE OF PRIMARY HOUSEHOLD MAINTAINER



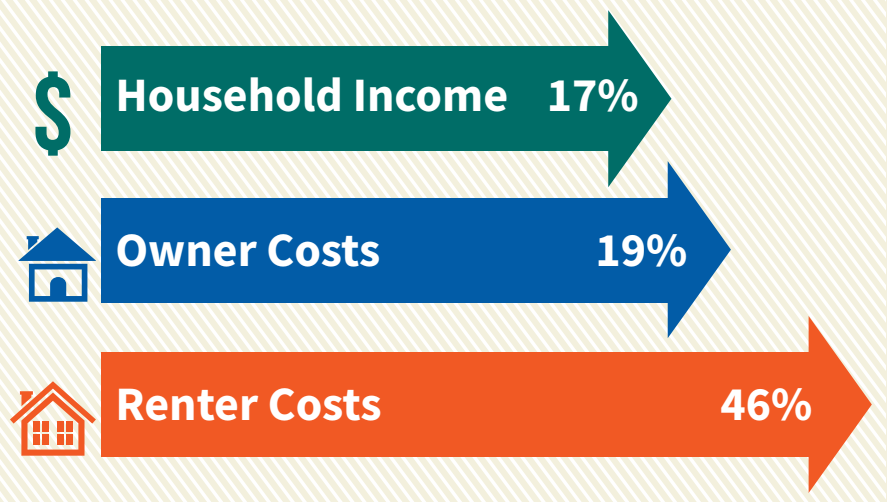
GTHA OWNER HOUSEHOLDS WITH OR WITHOUT MORTGAGES



MEDIAN MONTHLY HOUSING COSTS IN YORK REGION



INCREASE IN HOUSING COSTS COMPARED TO INCOME SINCE 2006



OWNERS WHO SPEND MORE THAN 30% OF HOUSEHOLD INCOME ON HOUSING

Municipality	Total Owner Households	Owner households spending more than 30% on housing	
		Number	%
York Region	306,030	85,815	28%
Aurora	15,815	3,380	21%
East Gwillimbury	7,155	1,430	20%
Georgina	14,025	3,310	24%
King	6,985	1,600	23%
Markham	88,390	27,560	31%
Newmarket	22,795	4,880	21%
Richmond Hill	52,855	17,860	34%
Vaughan	84,475	22,510	27%
Whitchurch-Stouffville	13,540	3,285	24%

Municipality	Total Renter Households	Renter households spending more than 30% on housing	
		Number	%
York Region	50,485	26,060	52%
Aurora	3,035	1,390	46%
East Gwillimbury	850	370	44%
Georgina	2,685	1,325	49%
King	1,015	460	45%
Markham	14,275	7,555	53%
Newmarket	5,875	2,775	47%
Richmond Hill	11,260	6,270	56%
Vaughan	9,755	5,105	52%
Whitchurch-Stouffville	1,735	800	46%



RENTERS WHO SPEND MORE THAN 30% OF HOUSEHOLD INCOME ON HOUSING

DEFINITIONS

Dwellings in need of major repairs

Refers to homes that need major repairs for such things as defective plumbing, or electrical wiring and/or structural repairs. This does not include renovations or additions for aesthetic purposes.

Housing suitability

Defined by the National Occupancy Standard as a measure of whether a dwelling has enough bedrooms for the size and composition of the household.

Subsidized housing

All types of housing for which the government provides financial support or rental assistance.

Primary household maintainer

The person in a household who is responsible for paying rent, mortgage, taxes, utilities and other services.

Housing cost

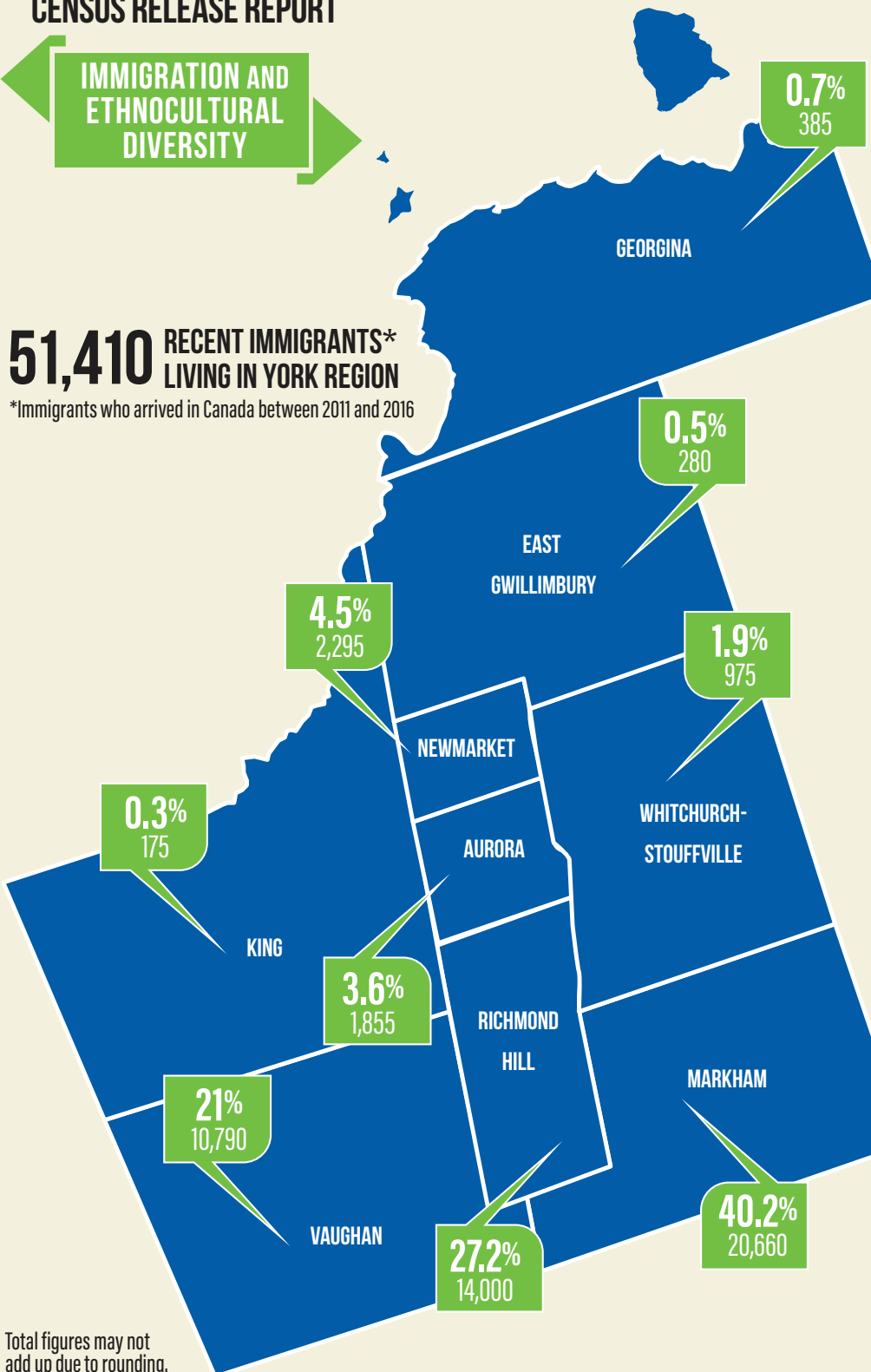
Housing expenses paid by families that own or rent their dwelling which could include mortgage payments, property taxes, condominium fees, utilities and municipal services.

For questions, please contact
Long Range Planning at paul.bottomley@york.ca or 1-877-464-9675 ext. 71530
For accessible formats or communication support, please contact
Corporate Communications at 1-877-464-9675 ext. 71234

IMMIGRATION AND ETHNOCULTURAL DIVERSITY

51,410 RECENT IMMIGRANTS*
LIVING IN YORK REGION

*Immigrants who arrived in Canada between 2011 and 2016



Total figures may not add up due to rounding.

FACTS AT A GLANCE

DISTRIBUTION OF RECENT IMMIGRANTS BY LOCAL MUNICIPALITY

47 per cent (515,225) of York Region residents were born outside of Canada - third highest in Ontario behind Peel and Toronto

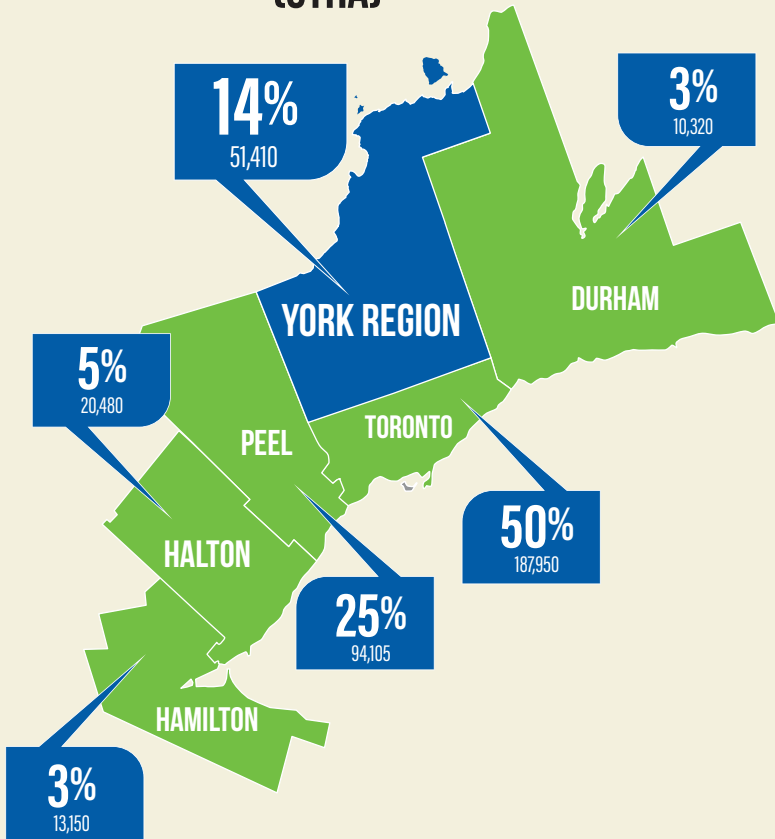
Recent immigrants (51,410) account for **10 per cent** of all immigrants in York Region

The **top three** countries of origin for recent immigrants in York Region are China, Iran and the Philippines

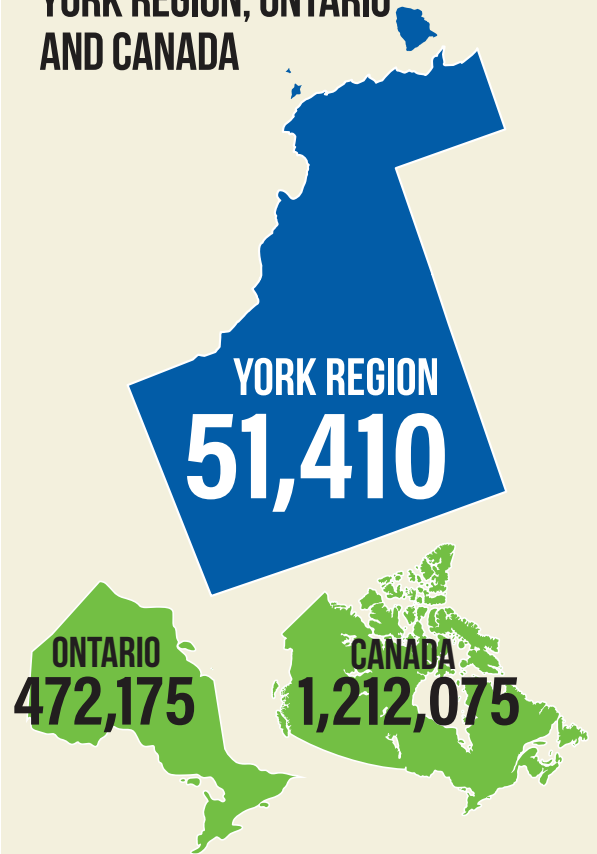
There were over **230** distinct ethnic origins reported in York Region

The City of Markham is Canada's most ethnically diverse community with **78 per cent** of the population identifying as a visible minority

377,415 RECENT IMMIGRANTS LIVING IN THE GREATER TORONTO AND HAMILTON AREA (GTHA)

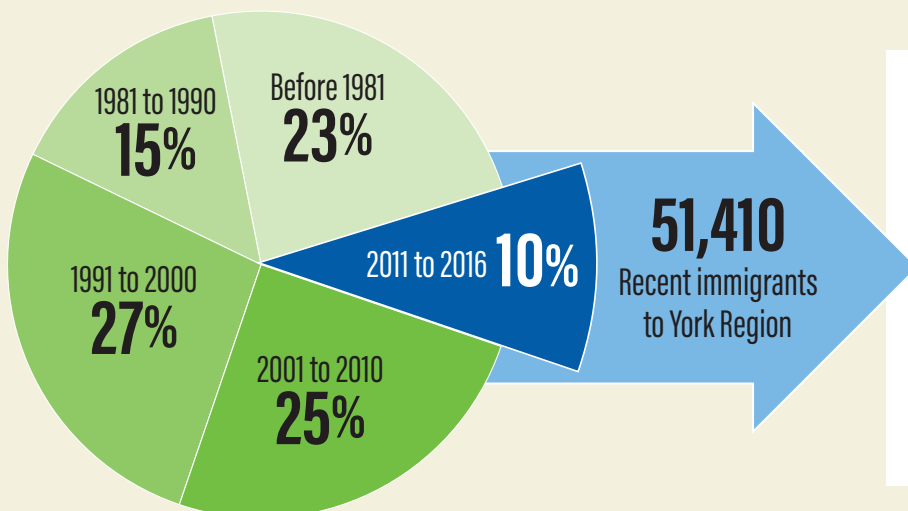


RECENT IMMIGRANTS TO YORK REGION, ONTARIO AND CANADA

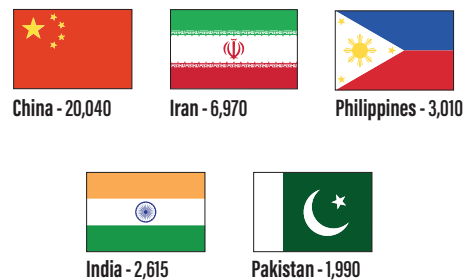


90 PER CENT OF YORK REGION RESIDENTS ARE CANADIAN CITIZENS

10 PER CENT OF IMMIGRANTS ARRIVED IN YORK REGION BETWEEN 2011 AND 2016

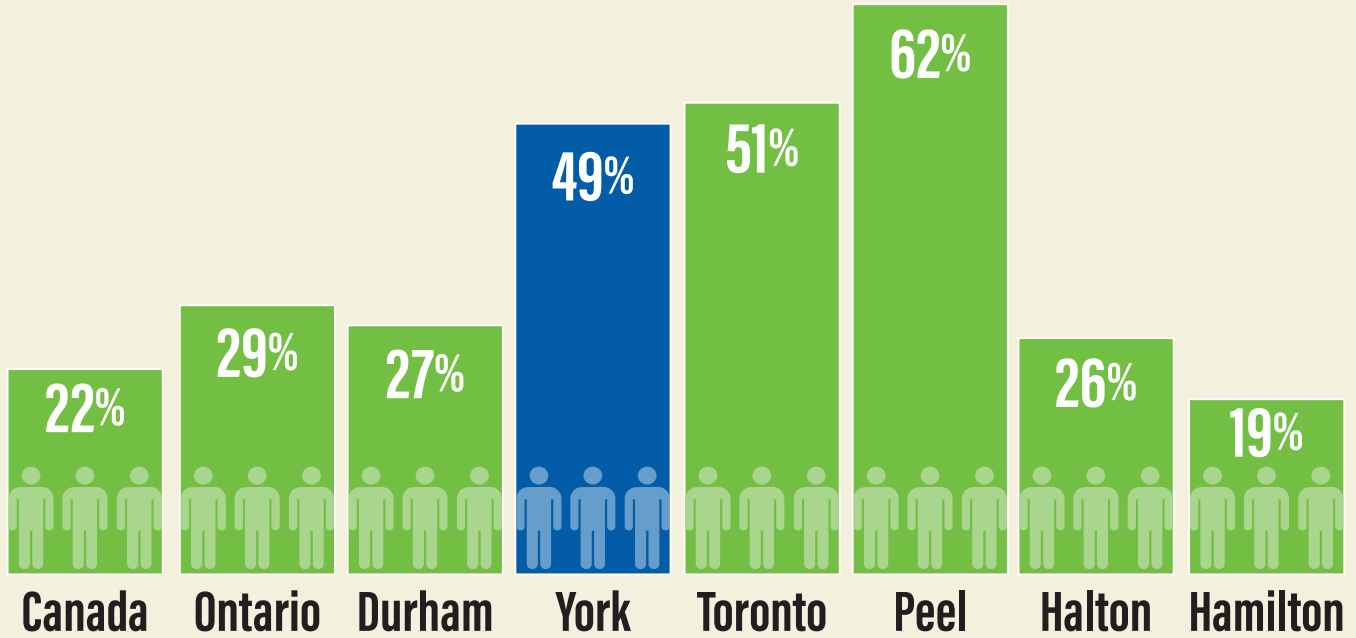


Top Five Countries of Origin



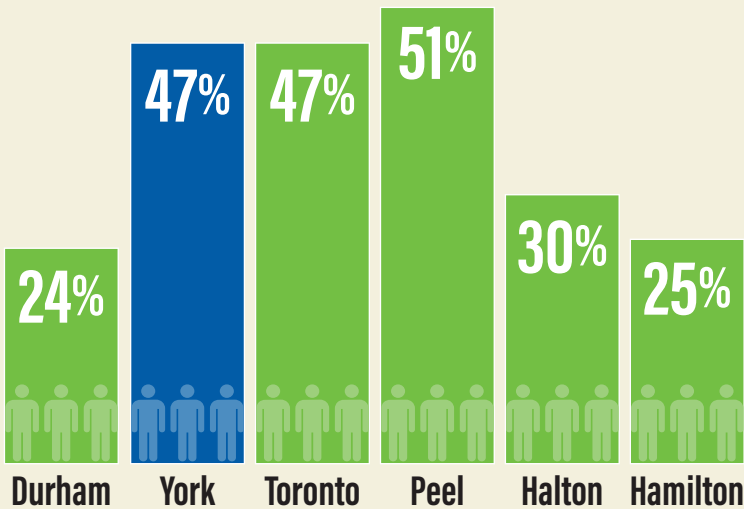
VISIBLE MINORITIES IN CANADA, ONTARIO AND THE GTHA

PROPORTION OF POPULATION THAT SELF-IDENTIFIED AS A VISIBLE MINORITY

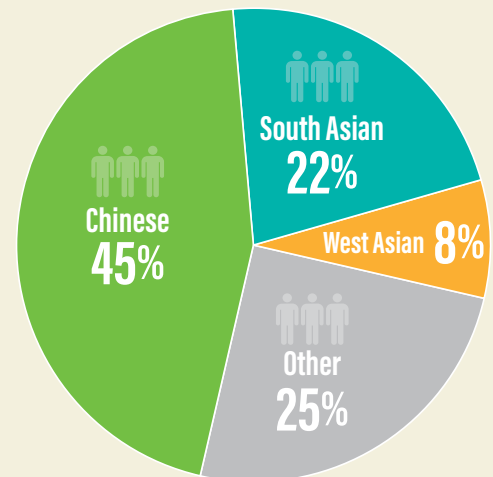


25 PER CENT OF ALL YORK REGION IMMIGRANTS ARRIVED UNDER THE AGE OF 14

PROPORTION OF GTHA POPULATION WHO ARE IMMIGRANTS



TOP VISIBLE MINORITY GROUPS IN YORK REGION



TOP 10 COUNTRIES OF ORIGIN FOR RECENT IMMIGRANTS TO YORK REGION

Rank	Country of Origin	Number of People
1	China	20,040
2	Iran	6,970
3	Philippines	3,010
4	India	2,615
5	Pakistan	1,990
6	South Korea	1,255
7	United States	1,140
8	Russian Federation	1,040
9	Hong Kong	990
10	Sri Lanka	930

TOP 10 ETHNIC ORIGINS IN YORK REGION

Rank	Ethnic Origins	Number of People
1	Chinese	255,965
2	Italian	159,470
3	Canadian	125,580
4	English	116,760
5	Scottish	81,155
6	Irish	78,650
7	East Indian	72,850
8	Russian	47,545
9	German	42,540
10	Iranian	41,005

DEFINITIONS

Visible Minority

Defined by the Employment Equity Act as "persons, other than Aboriginal peoples, who are non-Caucasian in race or non-white in colour". The visible minority population consists mainly of the following groups: South Asian, Chinese, Black, Filipino, Latin American, Arab, Southeast Asian, West Asian, Korean and Japanese.

Ethnic Origin

Defined by Statistics Canada as the ethnic or cultural origins of the person's ancestors. An ancestor is usually more distant than a grandparent.

For questions, please contact Long Range Planning at paul.bottomley@york.ca or 1-877-464-9675 ext. 71530

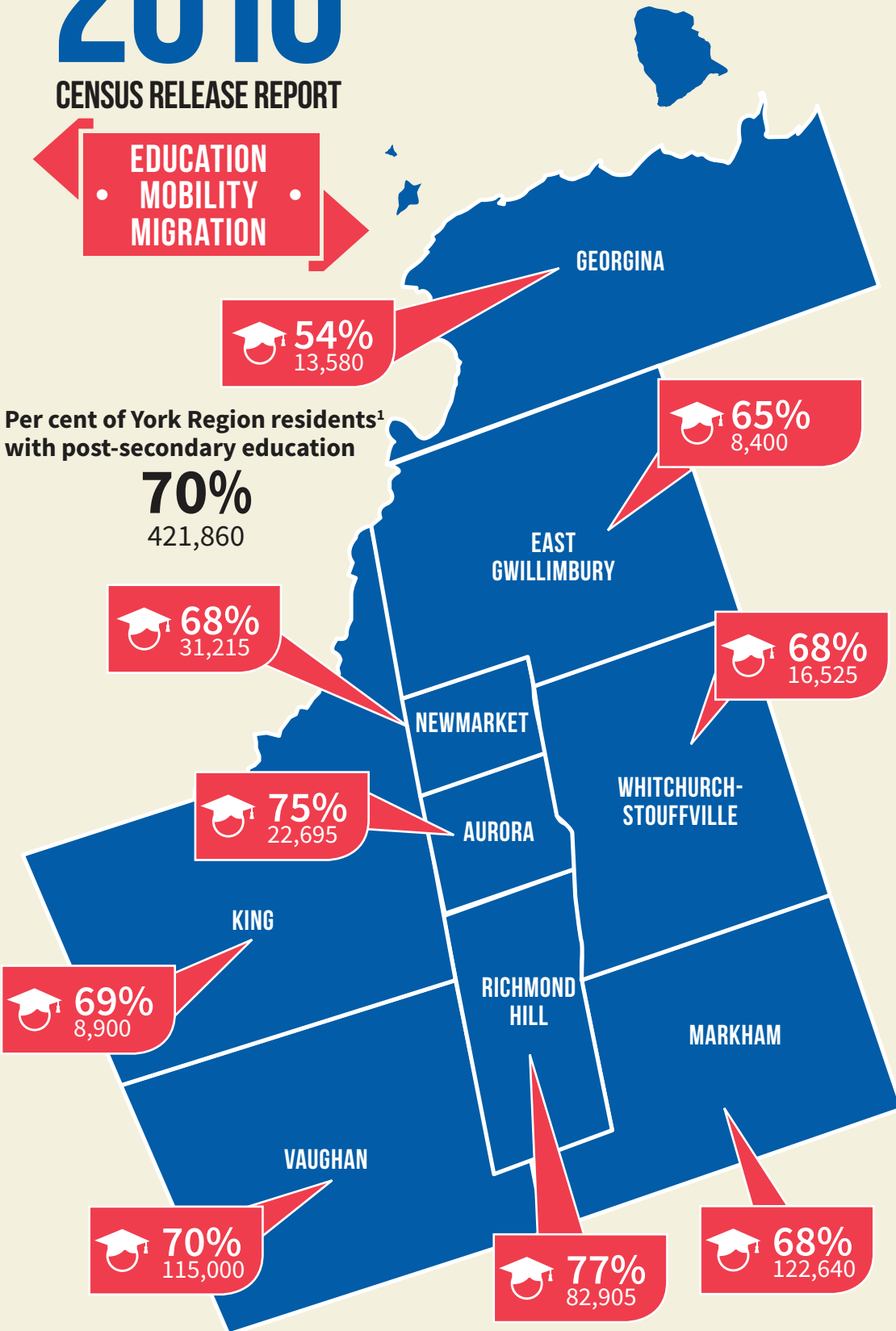
For accessible formats or communication support, please contact Corporate Communications at 1-877-464-9675 ext. 71234

POPULATION WITH POST-SECONDARY EDUCATION¹

**EDUCATION
MOBILITY
MIGRATION**

Per cent of York Region residents¹ with post-secondary education

70%
421,860



70 per cent of York Region residents have a post-secondary education - second highest in the Greater Toronto and Hamilton Area (GTHA) after Halton Region

8 per cent of York Region residents are without a high school diploma - second lowest in the GTHA after Halton Region

York Region ranks **fourth** in Canada for the share of residents with a university degree

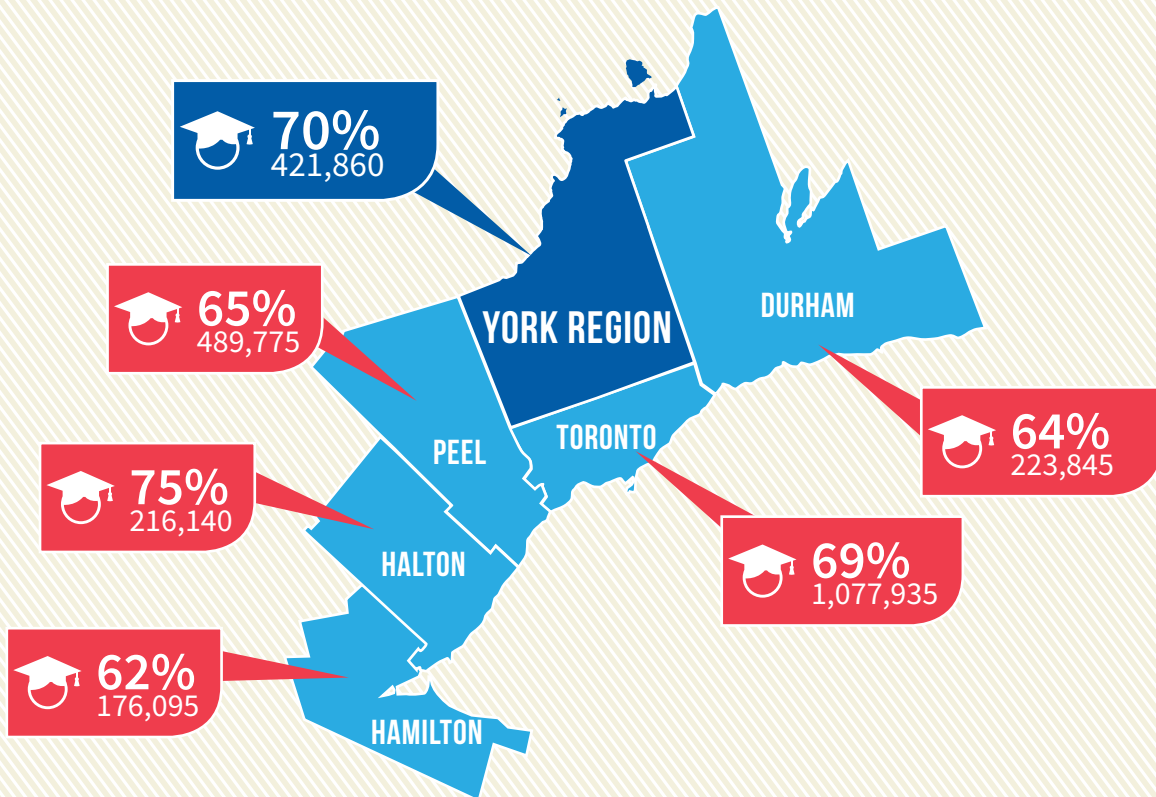
31 per cent of York Region residents obtained their post-secondary education outside of Canada

51 per cent of immigrants have a university degree or higher

Total figures may not add up due to rounding

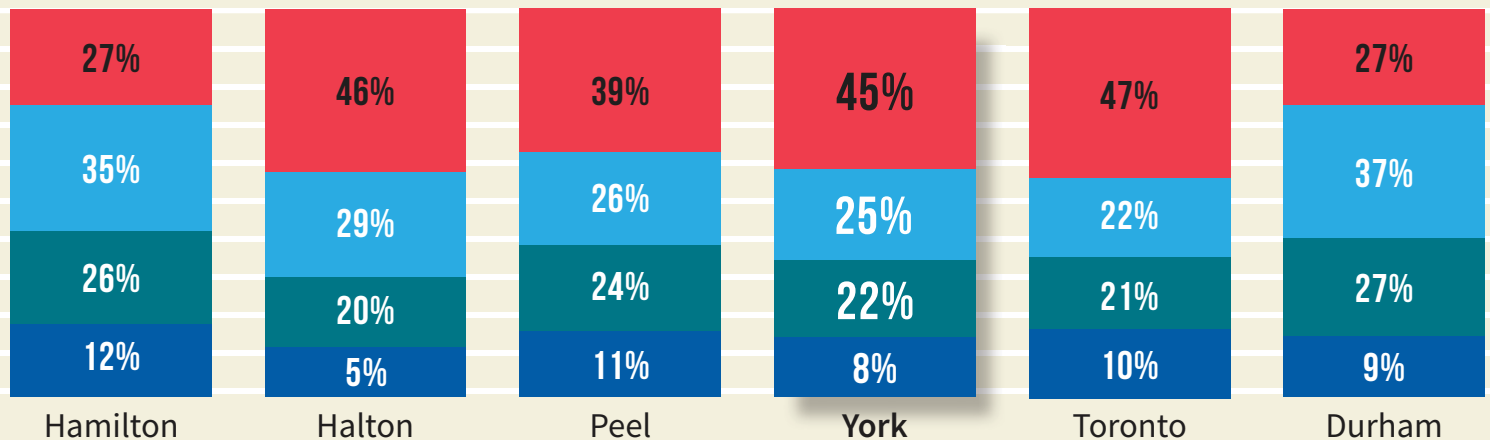
¹ Refers to population aged 25 to 64

POPULATION WITH POST-SECONDARY EDUCATION IN THE GTHA¹



LEVEL OF EDUCATION ACROSS THE GTHA

■ Without High School Education
 ■ High School Education
 ■ College or Trades
 ■ University Education



BETWEEN 2006 AND 2016 IN YORK REGION

↓ **4%**



FEWER RESIDENTS WITHOUT A HIGH SCHOOL EDUCATION

↑ **14%**



MORE RESIDENTS WITH A TRADES OR COLLEGE DIPLOMA

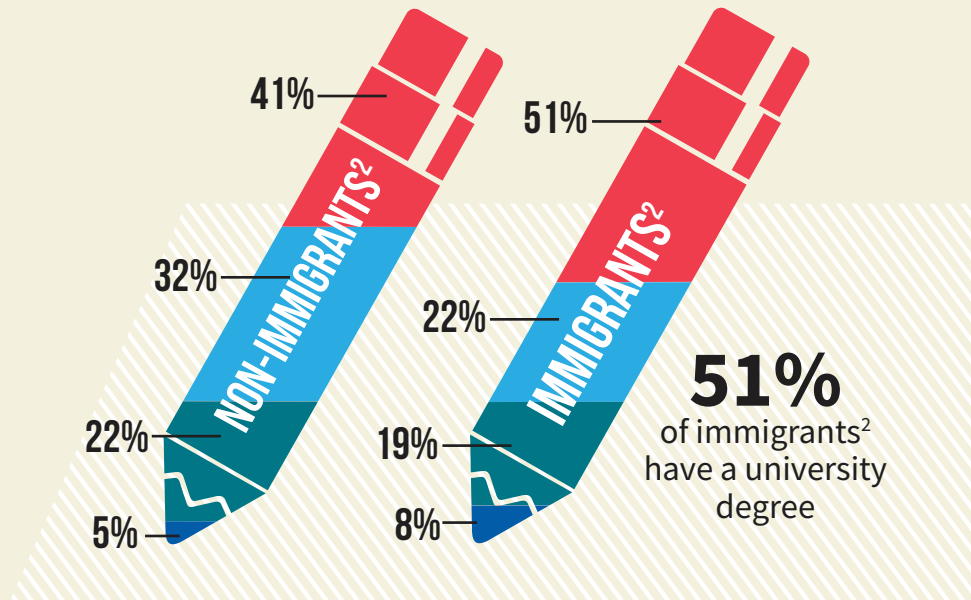
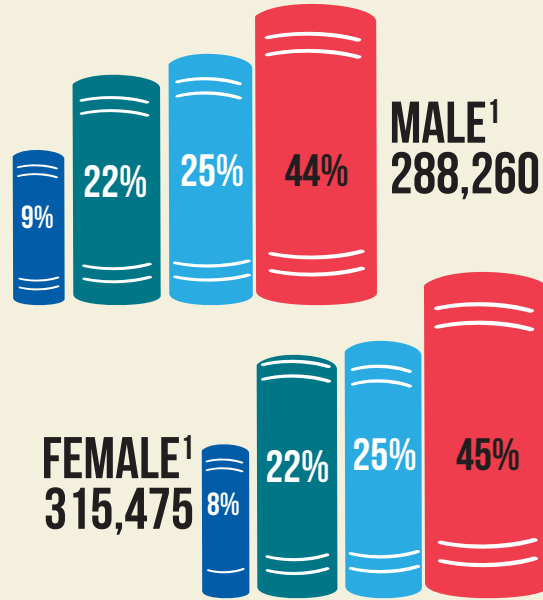
↑ **36%**



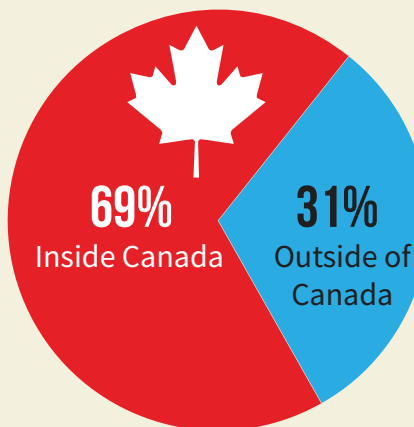
MORE RESIDENTS WITH A UNIVERSITY DEGREE

YORK REGION RESIDENTS BY LEVEL OF EDUCATION

Without High School Education High School Education College or Trades University Education



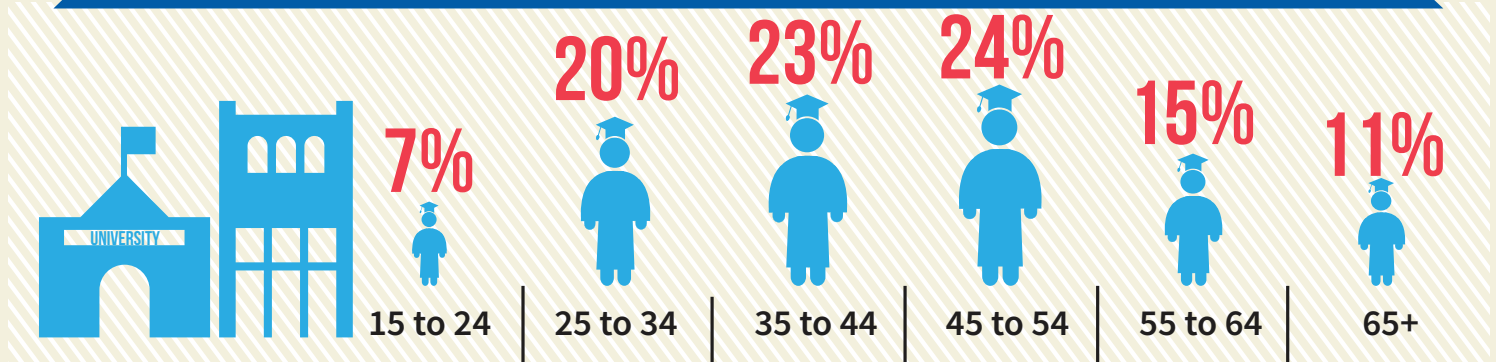
LOCATION OF POST-SECONDARY STUDY



TOP FIVE LOCATIONS OF STUDY OUTSIDE OF CANADA



IN 2016 THERE WERE 327,800 YORK REGION RESIDENTS WITH A UNIVERSITY DEGREE



¹ Refers to population aged 25 to 64

² Refers to a person aged 15 years and over who worked for pay or in self-employment in 2015 at all jobs held

LEVEL OF EDUCATION BY LOCAL MUNICIPALITY, POPULATION AGED 25-64

Municipality	Without High School Education		High School Education		College or Trades		University Education	
	Count	Percentage	Count	Percentage	Count	Percentage	Count	Percentage
Aurora	1,440	5%	6,155	20%	8,510	28%	14,185	47%
East Gwillimbury	1,110	9%	3,430	27%	4,720	36%	3,685	28%
Georgina	3,485	14%	8,305	33%	9,620	38%	3,965	15%
King	900	7%	3,170	24%	4,090	32%	4,815	37%
Markham	18,845	10%	39,450	22%	37,040	21%	85,595	47%
Newmarket	3,735	8%	10,630	23%	14,545	32%	16,670	37%
Richmond Hill	5,565	5%	19,200	18%	23,765	22%	59,140	55%
Vaughan	13,465	8%	35,065	22%	42,900	26%	72,095	44%
Whitchurch-Stouffville	1,795	7%	6,005	25%	7,145	29%	9,370	39%
York Region	50,335	8%	131,405	22%	152,330	25%	269,520	45%

MOBILITY STATUS - CHANGE IN PLACE OF RESIDENCE - 2011 TO 2016

Non-movers	687,285	66%
Movers	356,485	34%
Movers within York Region	169,945	16%
Movers to York Region from within Ontario	126,340	12%
Movers to York Region from other provinces and territories	7,325	1%
Movers to York Region who are new to Canada	52,880	5%

DEFINITIONS

Post-Secondary Education

Refers to those whose highest level of educational attainment is an apprenticeship or trades certificate or diploma (including 'centres de formation professionnelle'); college, CEGEP or other non-university certificate or diploma; university certificate or diploma below bachelor level; or a university degree (bachelor's degree; university certificate or diploma above bachelor level; degree in medicine, dentistry, veterinary medicine or optometry; master's degree; earned doctorate).

Without High School Education

Refers to having no certificate, diploma or degree

High School Education

Refers to a Secondary (high) school diploma or equivalency certificate

College or Trades

Refers to a College, CEGEP or other non-university certificate or diploma or an Apprenticeship or trades certificate or diploma

University Education

Refers to both University certificate or diploma below bachelor level and University certificate, diploma or degree at bachelor level or above

Mobility Status

Refers to the status of a person with regard to the place of residence in 2016 in relation to the place of residence in 2011

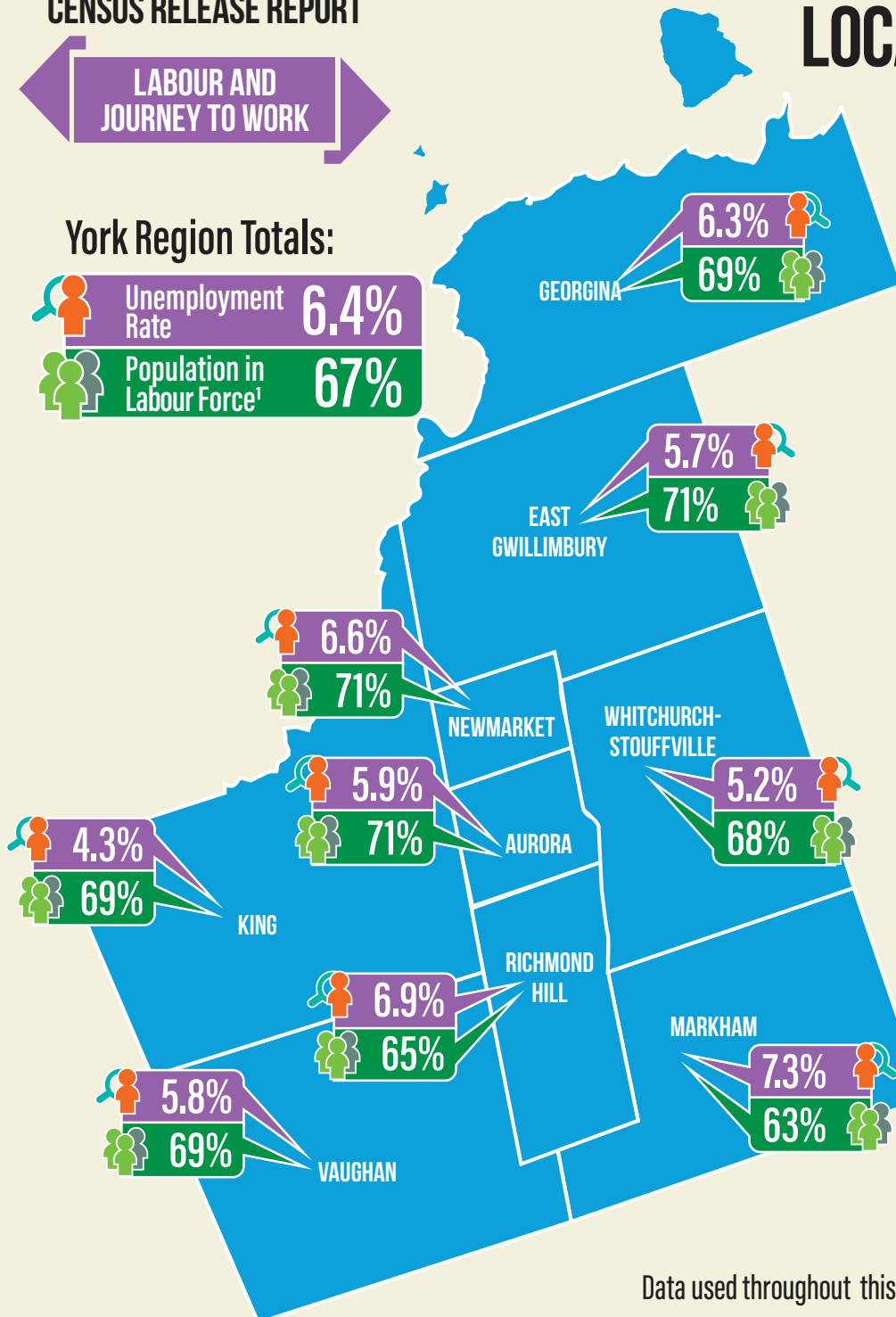
For questions, please contact
 Long Range Planning at paul.bottomley@york.ca or 1-877-464-9675 ext. 71530
 For accessible formats or communication support, please contact
 Corporate Communications at 1-877-464-9675 ext. 71234

LABOUR AND JOURNEY TO WORK

FACTS AT A GLANCE

UNEMPLOYMENT RATE AND LABOUR FORCE¹ BY LOCAL MUNICIPALITY

York Region Totals:



York Region's unemployment rate of **6.4 per cent** was the second lowest in the Greater Toronto and Hamilton Area (GTHA) after Halton Region

53 per cent of York Region residents worked full time in 2016 compared to 57 per cent in 2006

Since 2006, the number of residents Working at Home and with No Fixed Workplace increased by **32 per cent** and **36 per cent** respectively

Since 2006, there has been a **45 per cent** increase in York Region residents taking transit to work

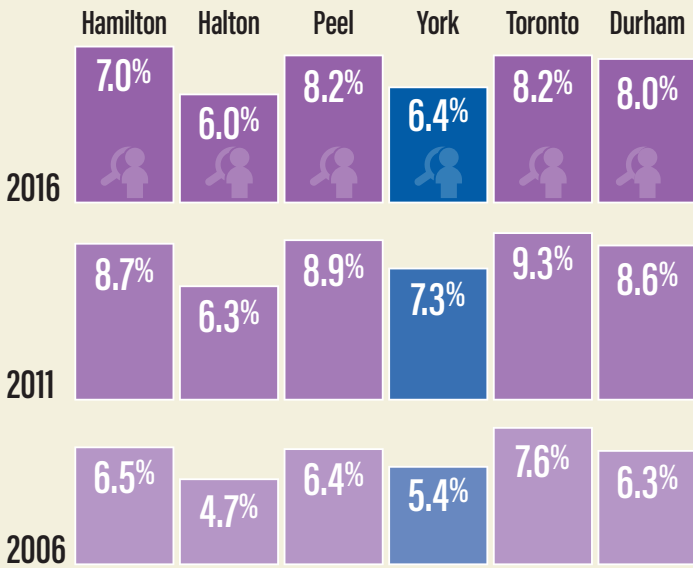
York Region residents have the **second longest commute to work** (averaging 34 minutes) in the GTHA after Durham Region

Data used throughout this bulletin is based on population aged 15 plus

¹Labour Force - Refers to persons aged 15 plus, who, during the census collection, were either employed or unemployed

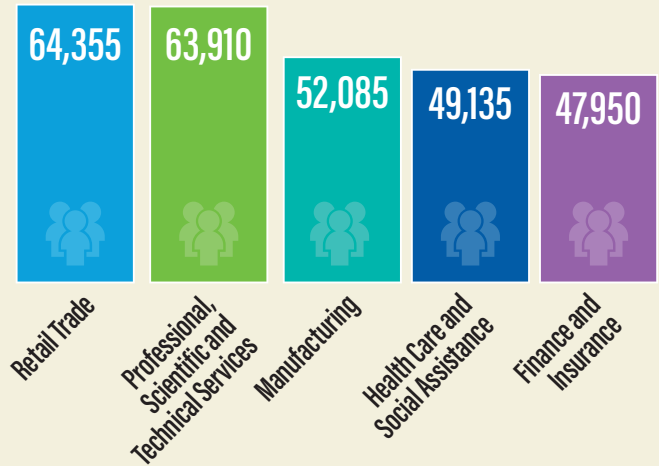
²Unemployment Rate - Refers to the unemployed, expressed as a percentage of the labour force

UNEMPLOYMENT RATES ACROSS THE GTHA

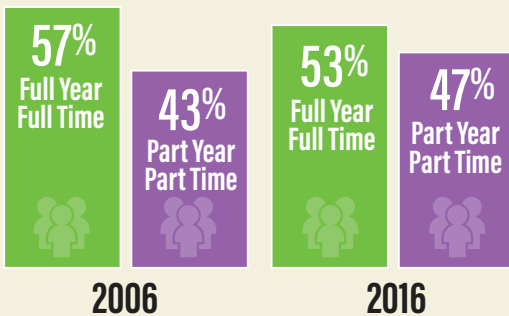


TOP FIVE INDUSTRIES IN YORK REGION'S EMPLOYED LABOUR FORCE

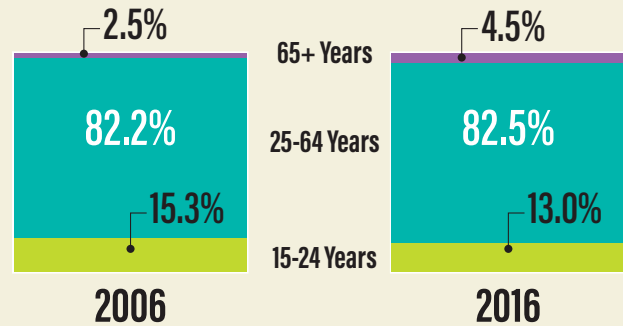
BASED ON THE NORTH AMERICAN INDUSTRY CLASSIFICATION SYSTEM (NAICS)



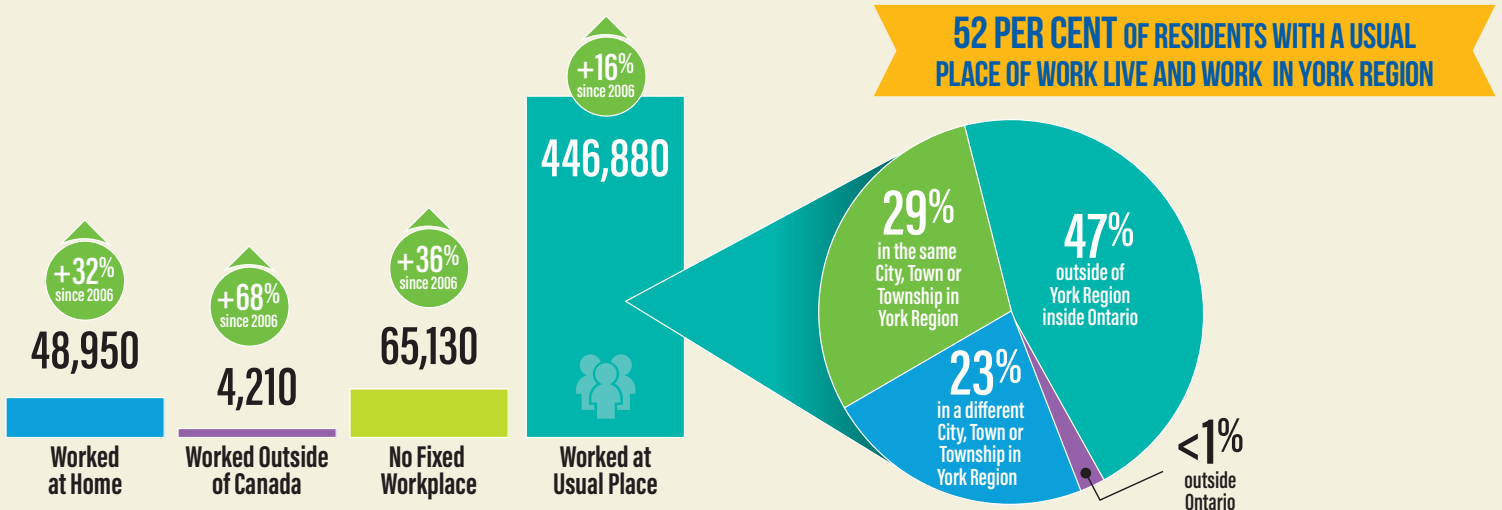
YORK REGION WORK ACTIVITY³



MORE SENIORS (65+) IN YORK REGION'S LABOUR FORCE¹



YORK REGION 2016 EMPLOYED LABOUR FORCE¹ BY PLACE OF WORK STATUS

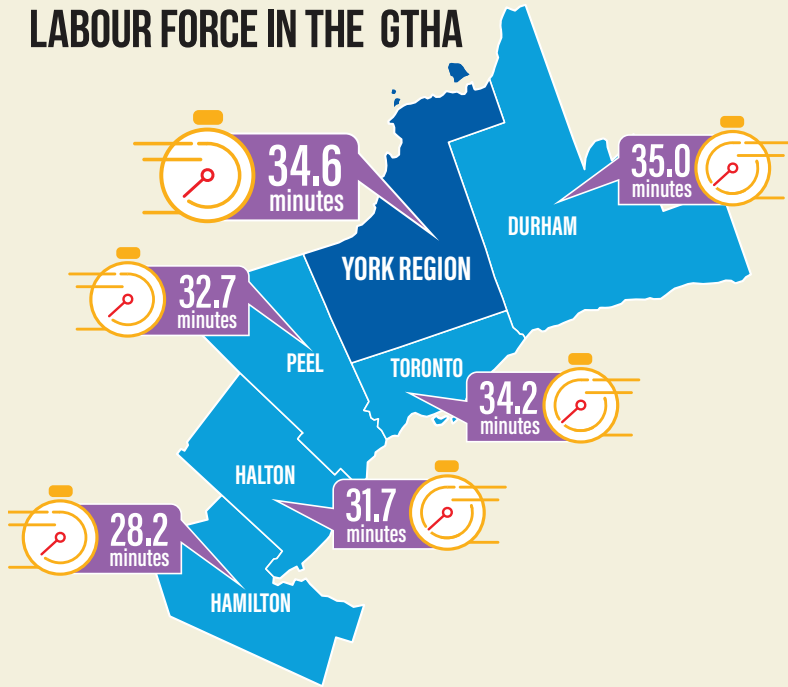


¹ **Labour Force** - Refers to persons aged 15 plus, who, during the census collection, were either employed or unemployed

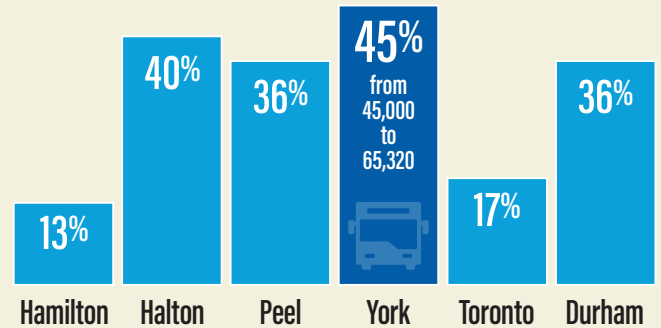
² **Unemployment Rate** - Refers to the unemployed, expressed as a percentage of the labour force

³ **Work Activity** - Refers to a person aged 15 years and over who worked for pay or was self-employed in 2015 at all jobs held.

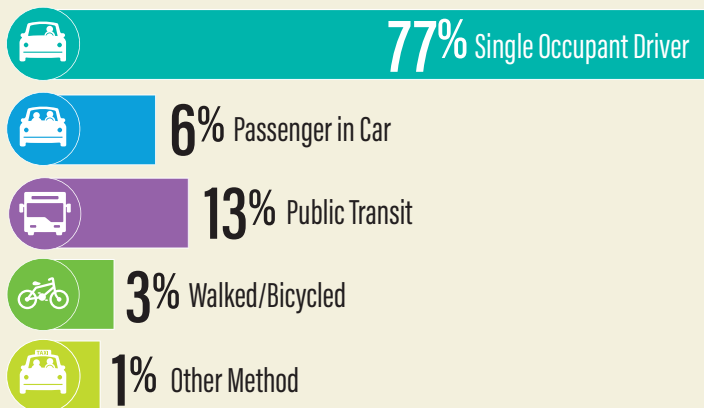
AVERAGE COMMUTE TIMES FOR THE EMPLOYED LABOUR FORCE IN THE GTHA



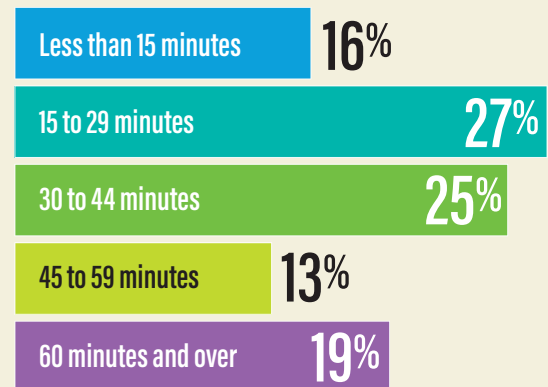
SINCE 2006, THE NUMBER OF RESIDENTS TAKING TRANSIT TO WORK HAS INCREASED ACROSS THE GTHA
THE HIGHEST INCREASE WAS IN YORK REGION



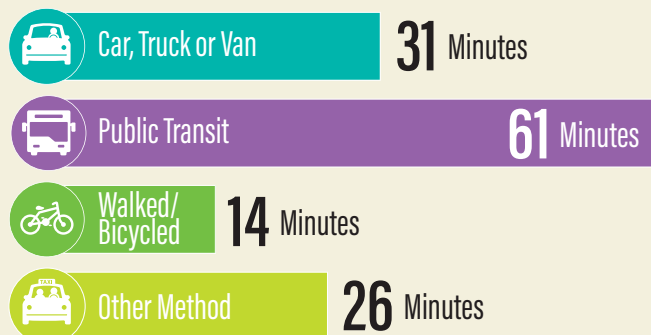
2016 MODE OF TRAVEL TO WORK IN YORK REGION



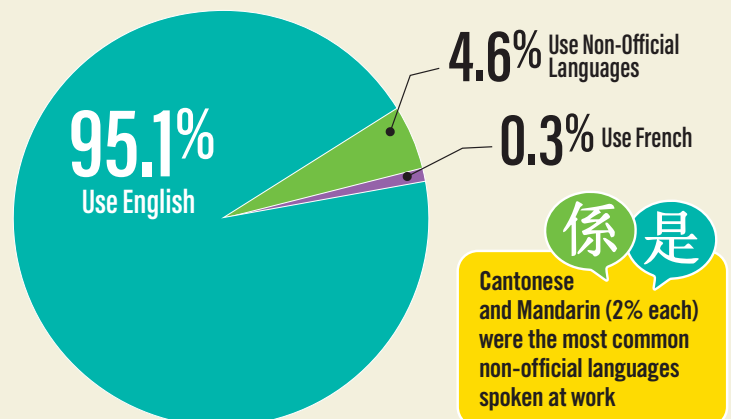
OVER HALF OF YORK REGION'S EMPLOYED LABOUR FORCE COMMUTE MORE THAN 30 MINUTES TO WORK



AVERAGE COMMUTE TIME BY MODE OF TRAVEL TO WORK IN YORK REGION



LANGUAGE OF WORK IN YORK REGION



YORK REGION RESIDENTS WORKING WITH NO FIXED WORKPLACE

Rank	Top 5 Industries	Number of People
1	Construction	20,065
2	Administrative Support, Waste Management and Remediation Services	6,250
3	Transportation and Warehousing	5,415
4	Professional, Scientific and Technical Services	5,290
5	Educational Services	4,455

YORK REGION RESIDENTS WORKING AT HOME

Rank	Top 5 Industries	Number of People
1	Professional, Scientific and Technical Services	14,035
2	Real Estate and Rental and Leasing	4,690
3	Finance and Insurance	4,165
4	Wholesale Trade	3,330
5	Other Services (except Public Administration)	3,045

YORK REGION RESIDENTS WORKING AT USUAL PLACE

Rank	Top 5 Industries	Number of People
1	Retail Trade	58,100
2	Manufacturing	47,855
3	Professional, Scientific and Technical Services	43,535
4	Health Care and Social Assistance	42,365
5	Finance and Insurance	41,855

THESE TABLES ARE BASED ON THE NORTH AMERICAN INDUSTRY CLASSIFICATION SYSTEM (NAICS)

DEFINITIONS

Labour Force

Refers to persons aged 15 plus, who, during the census collection, were either employed or unemployed.

Labour force = employed + unemployed.

Unemployment Rate

Refers to the unemployed, expressed as a percentage of the labour force.

No Fixed Workplace

When a person does not have a fixed address for work or does not go to the same location for work consistently.

Part-Time

Persons who worked full year mostly part time or part year mostly full time or part year mostly part time in 2015. Part year is less than 49 weeks and part time is less than 30 hours per week.

For questions, please contact Long Range Planning at paul.bottomley@york.ca or 1-877-464-9675 ext. 71530

For accessible formats or communication support, please contact Corporate Communications at 1-877-464-9675 ext. 71234

2016 **CENSUS** **RELEASE** REPORTS

For more information on census release reports please contact Paul Bottomley:

PLANNING SERVICES
1-877-464-9675 Extension 71530
paul.bottomley@york.ca

