



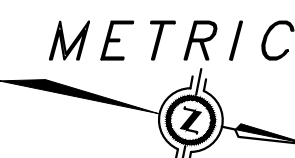
BURNSIDE

[THE DIFFERENCE IS OUR PEOPLE]



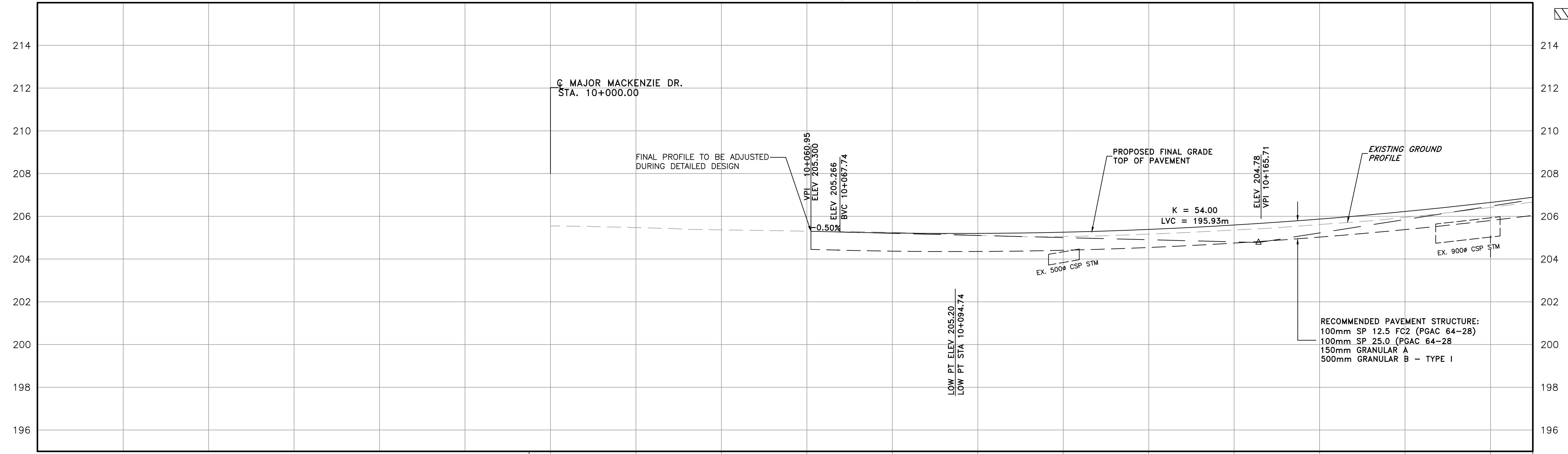
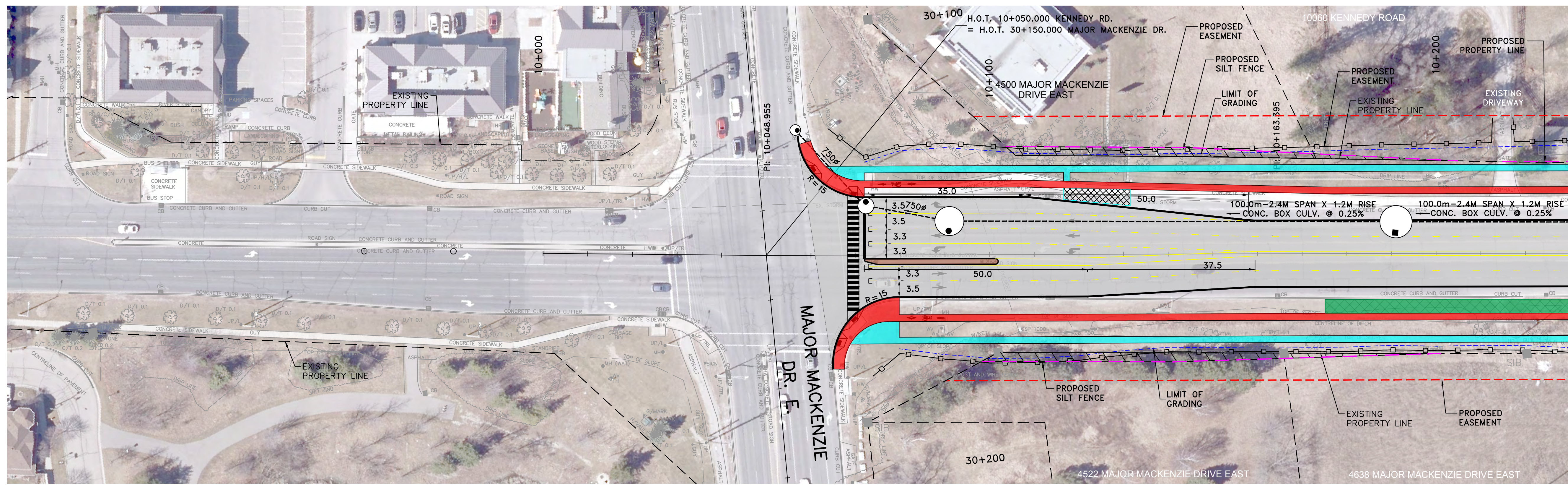
Kennedy Road ESR

Preliminary Design Plans Part 1



- NOTES**
1. ALL NEW INTERSECTION LAYOUTS ARE BASED ON THE COMPLETED COLLECTOR ROADS EA. FINAL LANE CONFIGURATION IS SUBJECT TO DEVELOPMENT APPROVALS.
 2. REFER TO TRCA EROSION AND SEDIMENT CONTROL GUIDE FOR URBAN CONSTRUCTION (2019) FOR THE DESIGN AND DESIGN ALTERATION OF ESC MEASURES.
 3. YORK REGION IS CURRENTLY COORDINATING WITH THE DEVELOPER AND UTILITY COMPANIES TO DETERMINE THE VARIOUS UNDERGROUND FACILITIES THAT WILL BE IMPLEMENTED WITHIN THE REGION'S ROAD ALLOWANCE. THE FINAL LOCATIONS OF THESE FACILITIES WILL BE CONFIRMED DURING DETAILED DESIGN.

- LEGEND**
- EXIST. RIGHT OF WAY
 - PROP. RIGHT OF WAY
 - PROP. LIMIT OF GRADING
 - PROP. EASEMENT
 - PROP. SILT FENCE
 - PROP. CHECK DAM
 - PROP. ASPHALT ROAD
 - PROP. PAVER MEDIAN
 - CYCLE TRACK/MUP
 - SIDEWALK
 - BIOSWALE
 - LID
 - BUS PAD
 - ADD'L WIDENING AT INTERSECTION



NOTES:
 THE LOCATION OF UTILITIES IS APPROXIMATE ONLY. CONSULT THE RESPECTIVE MUNICIPAL AUTHORITIES AND UTILITY COMPANIES TO DETERMINE THE EXACT LOCATION OF THEIR UTILITIES. THE CONTRACTOR SHALL VERIFY THE LOCATION OF UTILITIES AND SHALL ADEQUATELY PROTECT AND SUPPORT THEM DURING CONSTRUCTION.

- STORM SEWERS:**
1. INVERT ELEVATIONS SHOWN ARE AT CENTRE-LINE OF CATCHBASIN OR MANHOLE.
 2. PIPE LENGTHS SHOWN ARE CENTRE-LINE TO CENTRE-LINE OF CATCHBASIN OR MAINTENANCE HOLE.
 3. OFFSETS SHOWN ARE TO CENTRE OF CATCHBASIN OR MAINTENANCE COVER.

No.	DATE	REVISIONS	BY

BURNSIDE
 R.J. Burnside & Associates Limited
 6990 Creditview Road, Unit 2
 Mississauga, Ontario, L5N 8R9
 telephone (905) 821-1800
 fax (905) 821-1809
 web www.rjburnside.com

York Region Transportation Services

KENNEDY ROAD (Y.R. 3)
 NEW CONSTRUCTION
 STA. 10+000 TO STA. 10+230

DESIGN R.B.
 DRAWN R.B.
 CHECKED J.A.

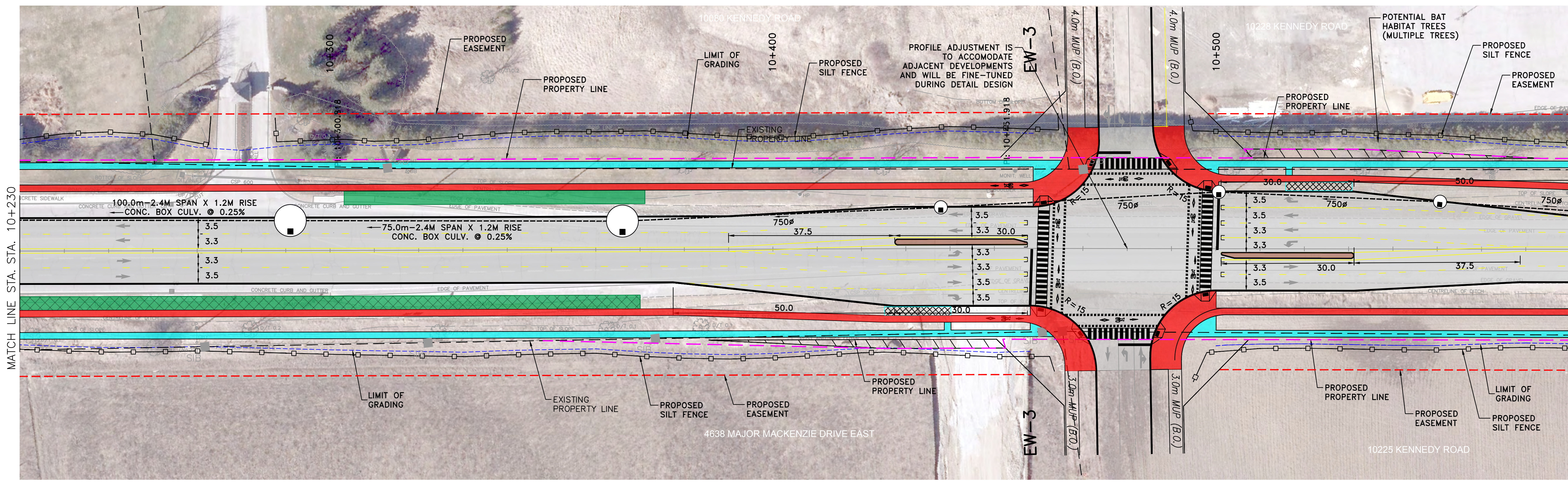
DWG. NO. NC-PAP-01
 CONT. NO. 2022-XXX
 SHEET NO. 1

FILE: \\monty\Shared Work Areas\052314 - Warden-Kennedy EA\03 ProductionDwg\Kennedy Rd\052314 - PLAN PROFILE-KEN.dwg

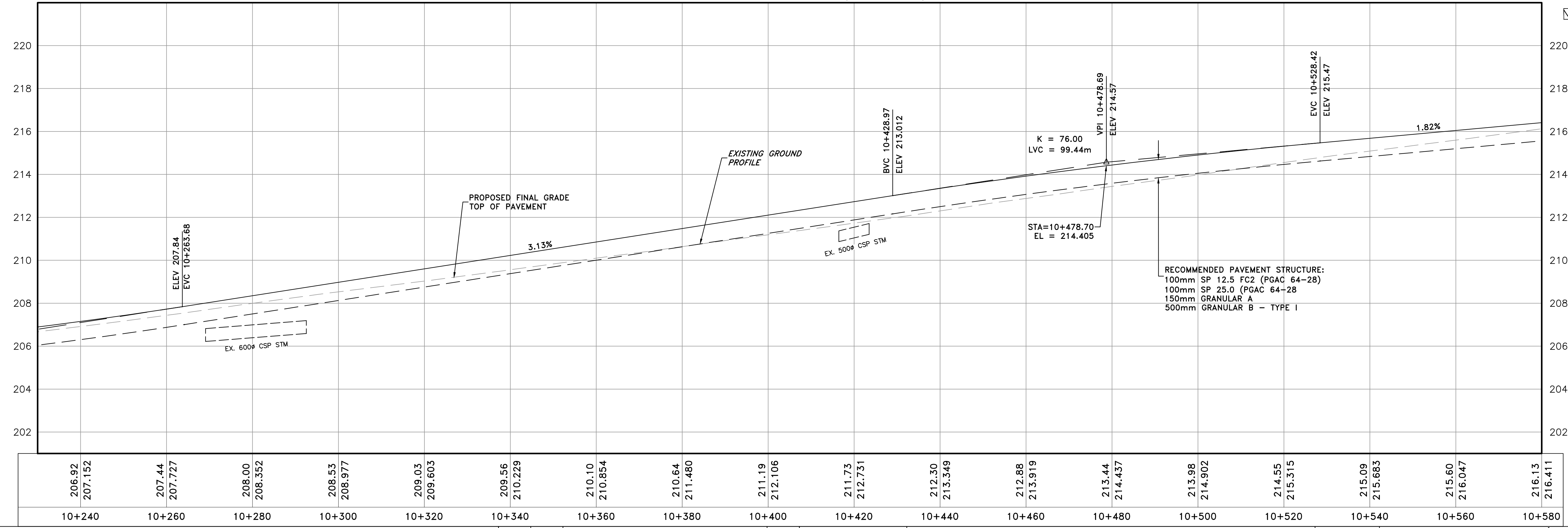


- NOTES**
1. ALL NEW INTERSECTION LAYOUTS ARE BASED ON THE COMPLETED COLLECTOR ROADS EA. FINAL LANE CONFIGURATION IS SUBJECT TO DEVELOPMENT APPROVALS.
 2. REFER TO TRCA EROSION AND SEDIMENT CONTROL GUIDE FOR URBAN CONSTRUCTION (2019) FOR THE DESIGN AND DESIGN ALTERATION OF ESC MEASURES.
 3. YORK REGION IS CURRENTLY COORDINATING WITH THE DEVELOPER AND UTILITY COMPANIES TO DETERMINE THE VARIOUS UNDERGROUND FACILITIES THAT WILL BE IMPLEMENTED WITHIN THE REGION'S ROAD ALLOWANCE. THE FINAL LOCATIONS OF THESE FACILITIES WILL BE CONFIRMED DURING DETAILED DESIGN.

- LEGEND**
- EXIST. RIGHT OF WAY
 - PROP. RIGHT OF WAY
 - PROP. LIMIT OF GRADING
 - PROP. EASEMENT
 - PROP. SILT FENCE
 - ▭ PROP. CHECK DAM
 - ▭ PROP. ASPHALT ROAD
 - ▭ PROP. PAVER MEDIAN
 - ▭ CYCLE TRACK/MUP
 - ▭ SIDEWALK
 - ▭ BIOSWALE
 - ▭ LID
 - ▭ BUS PAD
 - ▭ ADD'L WIDENING AT INTERSECTION



KENNEDY ROAD (Y.R. 3)



NOTES:
 THE LOCATION OF UTILITIES IS APPROXIMATE ONLY. CONSULT THE RESPECTIVE MUNICIPAL AUTHORITIES AND UTILITY COMPANIES TO DETERMINE THE EXACT LOCATION OF THEIR UTILITIES. THE CONTRACTOR SHALL VERIFY THE LOCATION OF UTILITIES AND SHALL ADEQUATELY PROTECT AND SUPPORT THEM DURING CONSTRUCTION.

- STORM SEWERS:**
1. INVERT ELEVATIONS SHOWN ARE AT CENTRE-LINE OF CATCHBASIN OR MANHOLE.
 2. PIPE LENGTHS SHOWN ARE CENTRE-LINE TO CENTRE-LINE OF CATCHBASIN OR MAINTENANCE HOLE.
 3. OFFSETS SHOWN ARE TO CENTRE OF CATCHBASIN OR MAINTENANCE COVER.

No.	DATE	REVISIONS	BY

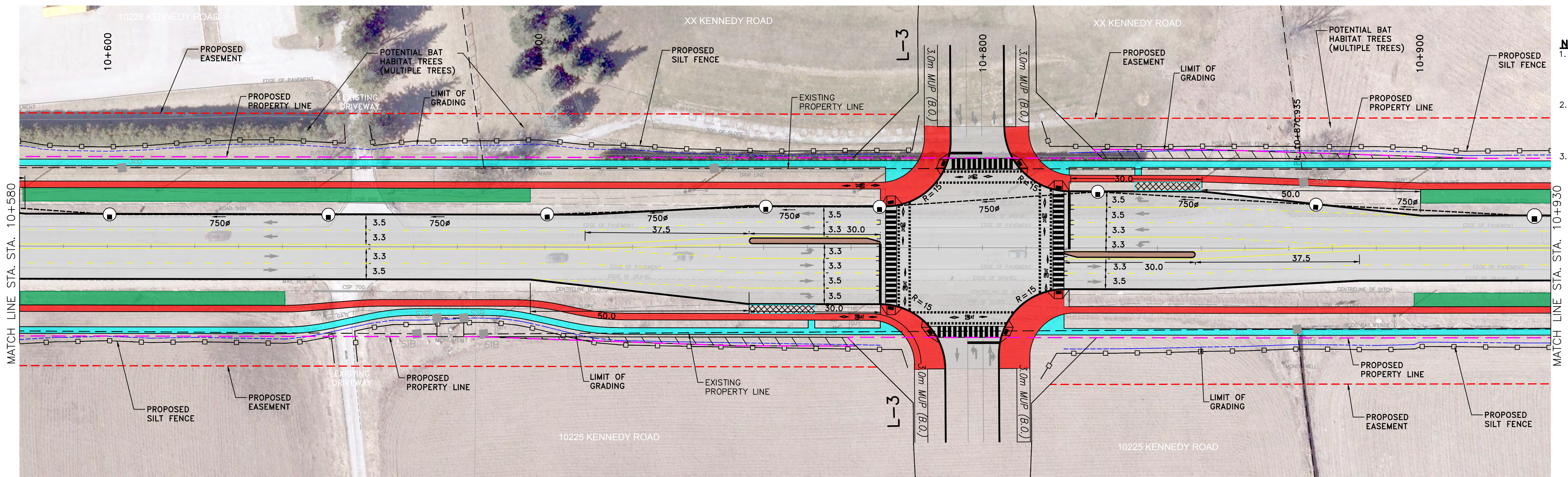
BURNSIDE
 R.J. Burnside & Associates Limited
 6990 Creditview Road, Unit 2
 Mississauga, Ontario, L5N 8R9
 telephone (905) 821-1800
 fax (905) 821-1809
 web www.rjburnside.com

York Region Transportation Services

DESIGN R.B.
 DRAWN R.B.
 CHECKED J.A.

KENNEDY ROAD (Y.R. 3)
 NEW CONSTRUCTION
 STA. 10+230 TO STA. 10+580

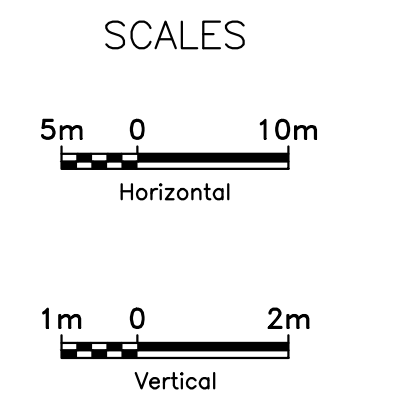
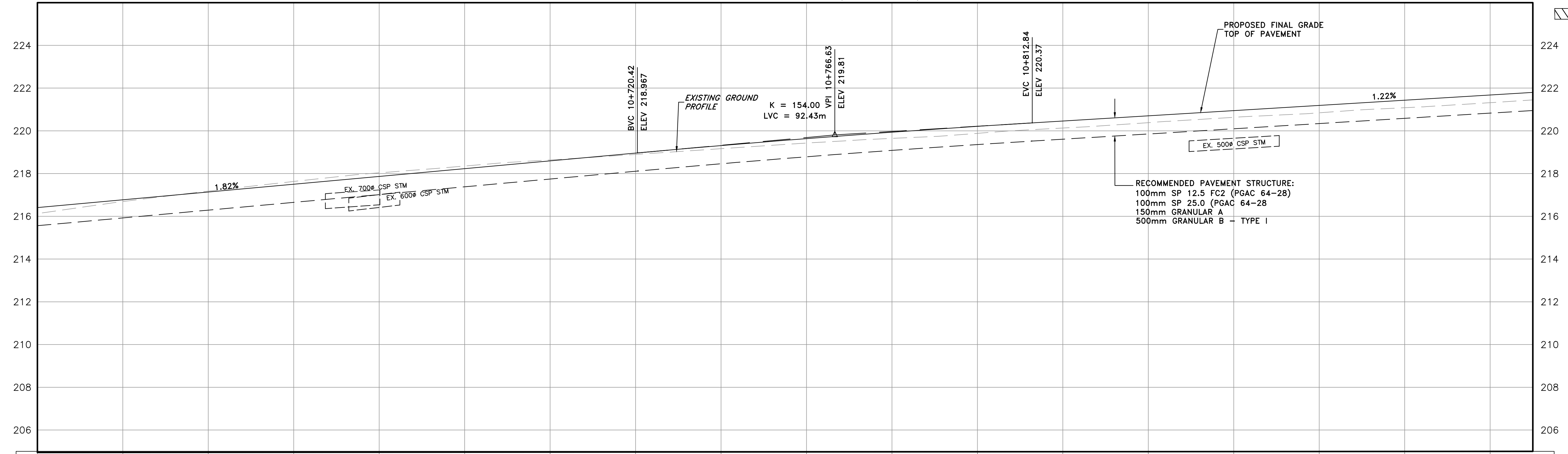
DWG. NO. NC-PAP-02
 CONT. NO. 2022-XXX
 SHEET NO. 2



- NOTES**
1. ALL NEW INTERSECTION LAYOUTS ARE BASED ON THE COMPLETED COLLECTOR ROADS EA. FINAL LANE CONFIGURATION IS SUBJECT TO DEVELOPMENT APPROVALS.
 2. REFER TO TRCA EROSION AND SEDIMENT CONTROL GUIDE FOR URBAN CONSTRUCTION (2019) FOR THE DESIGN AND DESIGN ALTERATION OF ESC MEASURES.
 3. YORK REGION IS CURRENTLY COORDINATING WITH THE DEVELOPER AND UTILITY COMPANIES TO DETERMINE THE VARIOUS UNDERGROUND FACILITIES THAT WILL BE IMPLEMENTED WITHIN THE REGION'S ROAD ALLOWANCE. THE FINAL LOCATIONS OF THESE FACILITIES WILL BE CONFIRMED DURING DETAILED DESIGN.

- LEGEND**
- EXIST. RIGHT OF WAY
 - - - PROP. RIGHT OF WAY
 - - - PROP. LIMIT OF GRADING
 - - - PROP. EASEMENT
 - PROP. SILT FENCE
 - ▭ PROP. CHECK DAM
 - ▭ PROP. ASPHALT ROAD
 - ▭ PROP. PAVER MEDIAN
 - ▭ CYCLE TRACK/MUP
 - ▭ SIDEWALK
 - ▭ BIOSWALE
 - ▭ LID
 - ▭ BUS PAD
 - ▭ ADD'L WIDENING AT INTERSECTION

KENNEDY ROAD (Y.R. 3)



216.13	216.69	217.18	217.63	218.03	218.35	218.64	218.90	219.43	219.65	219.88	220.13	220.38	220.63	220.84	221.08	221.32
216.411	216.775	217.139	217.503	217.867	218.231	218.595	218.959	219.636	219.936	220.210	220.459	220.703	220.947	221.191	221.435	221.679
10+580	10+600	10+620	10+640	10+660	10+680	10+700	10+720	10+740	10+760	10+780	10+800	10+820	10+840	10+860	10+880	10+900

NOTES:
 THE LOCATION OF UTILITIES IS APPROXIMATE ONLY. CONSULT THE RESPECTIVE MUNICIPAL AUTHORITIES AND UTILITY COMPANIES TO DETERMINE THE EXACT LOCATION OF THEIR UTILITIES. THE CONTRACTOR SHALL VERIFY THE LOCATION OF UTILITIES AND SHALL ADEQUATELY PROTECT AND SUPPORT THEM DURING CONSTRUCTION.

- STORM SEWERS:**
1. INVERT ELEVATIONS SHOWN ARE AT CENTRE-LINE OF CATCHBASIN OR MANHOLE.
 2. PIPE LENGTHS SHOWN ARE CENTRE-LINE TO CENTRE-LINE OF CATCHBASIN OR MAINTENANCE HOLE.
 3. OFFSETS SHOWN ARE TO CENTRE OF CATCHBASIN OR MAINTENANCE COVER.

No.	DATE	REVISIONS	BY

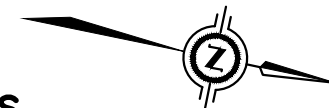
BURNSIDE
 R.J. Burnside & Associates Limited
 6990 Creditview Road, Unit 2
 Mississauga, Ontario, L5N 8R9
 telephone (905) 821-1800
 fax (905) 821-1809
 web www.rjburnside.com

York Region Transportation Services

DESIGN R.B.
 DRAWN R.B.
 CHECKED J.A.

KENNEDY ROAD (Y.R. 3)
 NEW CONSTRUCTION
 STA. 10+580 TO STA. 10+930

DWG. NO. NC-PAP-03
 CONT. NO. 2022-XXX
 SHEET NO. 3

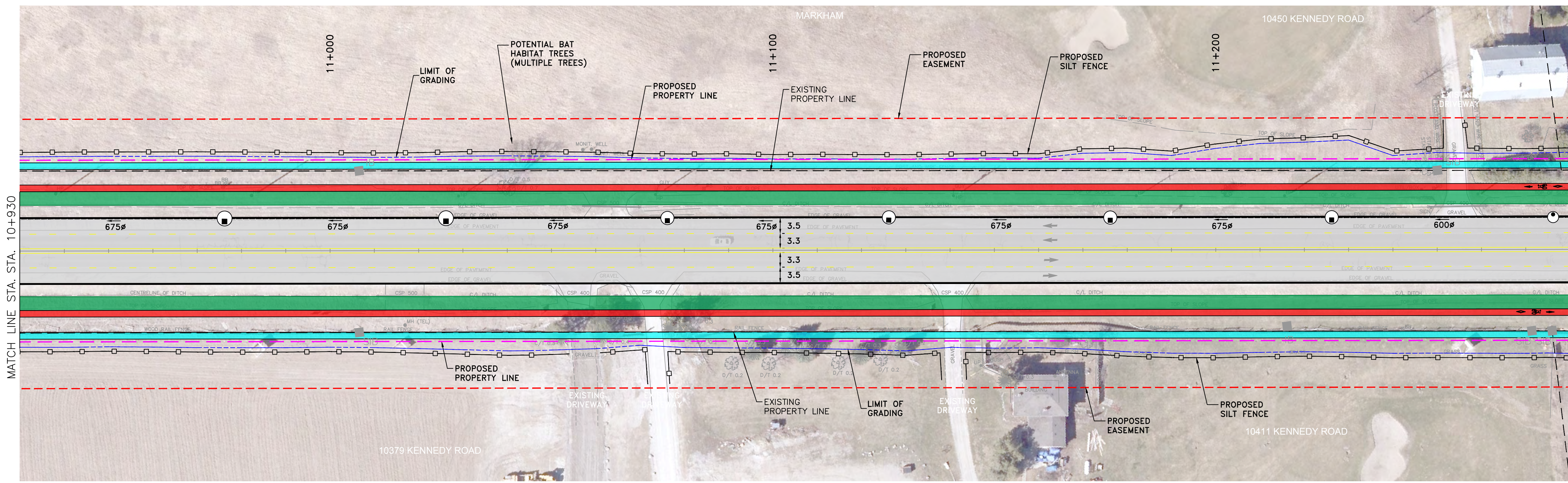


NOTES

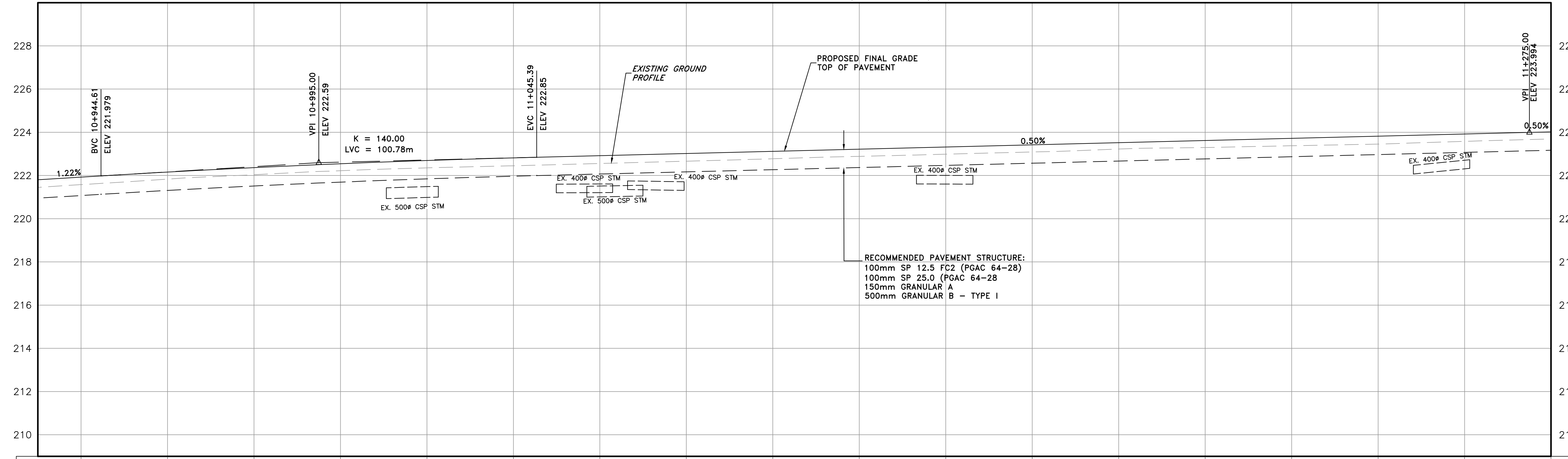
1. ALL NEW INTERSECTION LAYOUTS ARE BASED ON THE COMPLETED COLLECTOR ROADS EA. FINAL LANE CONFIGURATION IS SUBJECT TO DEVELOPMENT APPROVALS.
2. REFER TO TRCA EROSION AND SEDIMENT CONTROL GUIDE FOR URBAN CONSTRUCTION (2019) FOR THE DESIGN AND DESIGN ALTERATION OF ESC MEASURES.
3. YORK REGION IS CURRENTLY COORDINATING WITH THE DEVELOPER AND UTILITY COMPANIES TO DETERMINE THE VARIOUS UNDERGROUND FACILITIES THAT WILL BE IMPLEMENTED WITHIN THE REGION'S ROAD ALLOWANCE. THE FINAL LOCATIONS OF THESE FACILITIES WILL BE CONFIRMED DURING DETAILED DESIGN.

LEGEND

- EXIST. RIGHT OF WAY
- PROP. RIGHT OF WAY
- PROP. LIMIT OF GRADING
- PROP. EASEMENT
- PROP. SILT FENCE
- PROP. CHECK DAM
- PROP. ASPHALT ROAD
- PROP. PAVER MEDIAN
- CYCLE TRACK/MUP
- SIDEWALK
- BIOSWALE
- LID
- BUS PAD
- ADD'L WIDENING AT INTERSECTION

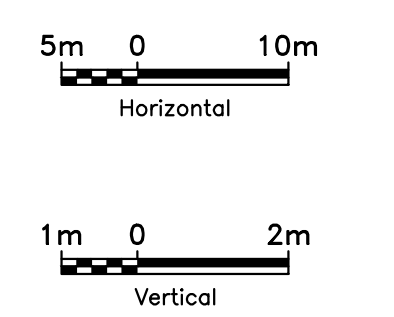


KENNEDY ROAD (Y.R. 3)



RECOMMENDED PAVEMENT STRUCTURE:
 100mm SP 12.5 FC2 (PGAC 64-28)
 100mm SP 25.0 (PGAC 64-28)
 150mm GRANULAR A
 500mm GRANULAR B - TYPE I

SCALES



221.58 221.923	221.83 222.158	222.04 222.366	222.22 222.545	222.35 222.696	222.45 222.818	222.56 222.919	222.66 223.019	222.77 223.119	222.89 223.219	222.99 223.319	223.09 223.419	223.22 223.519	223.30 223.619	223.38 223.719	223.45 223.819	223.58 223.919	223.69 224.019
10+940	10+960	10+980	11+000	11+020	11+040	11+060	11+080	11+100	11+120	11+140	11+160	11+180	11+200	11+220	11+240	11+260	11+280

NOTES:
 THE LOCATION OF UTILITIES IS APPROXIMATE ONLY. CONSULT THE RESPECTIVE MUNICIPAL AUTHORITIES AND UTILITY COMPANIES TO DETERMINE THE EXACT LOCATION OF THEIR UTILITIES. THE CONTRACTOR SHALL VERIFY THE LOCATION OF UTILITIES AND SHALL ADEQUATELY PROTECT AND SUPPORT THEM DURING CONSTRUCTION.

STORM SEWERS:
 1. INVERT ELEVATIONS SHOWN ARE AT CENTRE-LINE OF CATCHBASIN OR MANHOLE.
 2. PIPE LENGTHS SHOWN ARE CENTRE-LINE TO CENTRE-LINE OF CATCHBASIN OR MAINTENANCE HOLE.
 3. OFFSETS SHOWN ARE TO CENTRE OF CATCHBASIN OR MAINTENANCE COVER.

No.	DATE	REVISIONS	BY

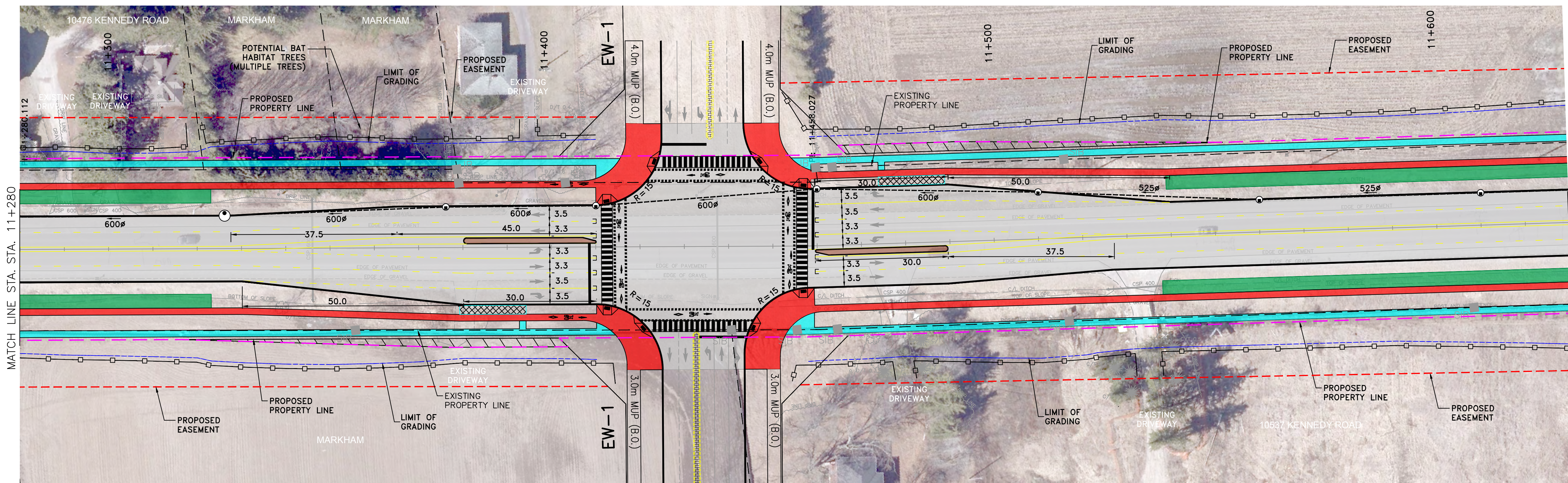
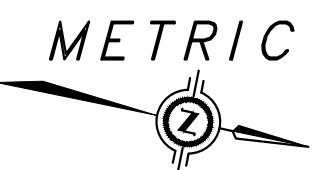
BURNSIDE
 R.J. Burnside & Associates Limited
 6990 Creditview Road, Unit 2
 Mississauga, Ontario, L5N 8R9
 telephone (905) 821-1800
 fax (905) 821-1809
 web www.rjburnside.com

York Region Transportation Services

KENNEDY ROAD (Y.R. 3)
 NEW CONSTRUCTION
 STA. 10+930 TO STA. 11+280

DESIGN R.B.
 DRAWN R.B.
 CHECKED J.A.

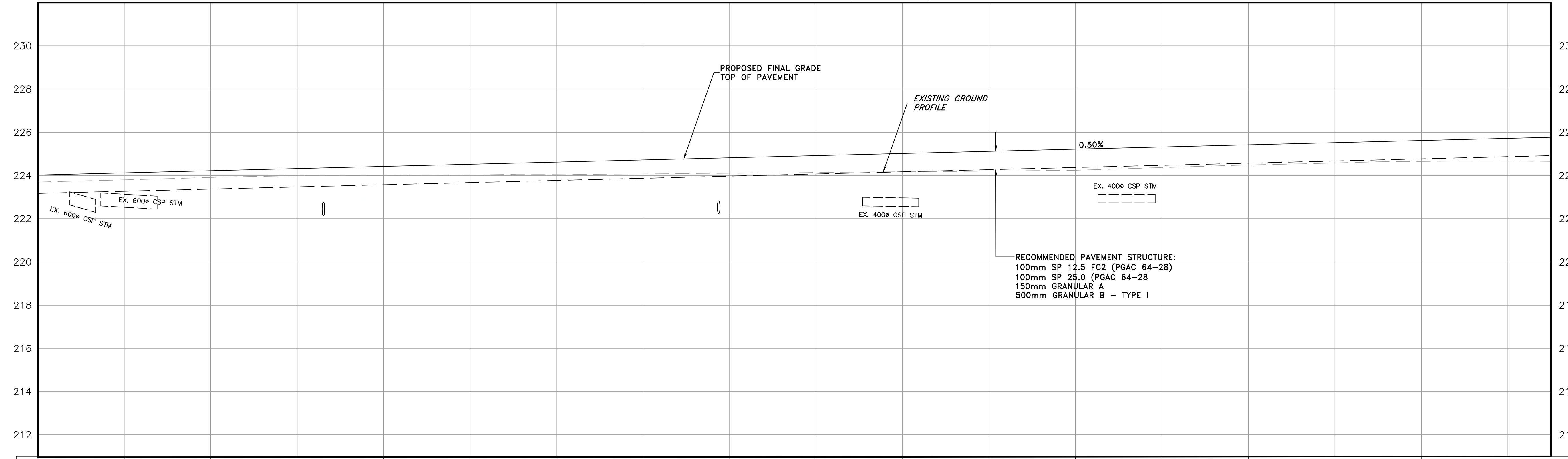
DWG. NO. NC-PAP-04
 CONT. NO. 2022-XXX
 SHEET NO. 4



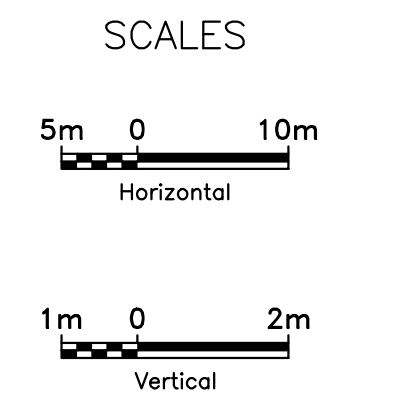
- NOTES**
1. ALL NEW INTERSECTION LAYOUTS ARE BASED ON THE COMPLETED COLLECTOR ROADS EA. FINAL LANE CONFIGURATION IS SUBJECT TO DEVELOPMENT APPROVALS.
 2. REFER TO TRCA EROSION AND SEDIMENT CONTROL GUIDE FOR URBAN CONSTRUCTION (2019) FOR THE DESIGN AND DESIGN ALTERATION OF ESC MEASURES.
 3. YORK REGION IS CURRENTLY COORDINATING WITH THE DEVELOPER AND UTILITY COMPANIES TO DETERMINE THE VARIOUS UNDERGROUND FACILITIES THAT WILL BE IMPLEMENTED WITHIN THE REGION'S ROAD ALLOWANCE. THE FINAL LOCATIONS OF THESE FACILITIES WILL BE CONFIRMED DURING DETAILED DESIGN.

- LEGEND**
- EXIST. RIGHT OF WAY
 - PROP. RIGHT OF WAY
 - PROP. LIMIT OF GRADING
 - PROP. EASEMENT
 - PROP. SILT FENCE
 - PROP. CHECK DAM
 - PROP. ASPHALT ROAD
 - PROP. PAVER MEDIAN
 - CYCLE TRACK/MUP
 - SIDEWALK
 - BIOSWALE
 - LID
 - BUS PAD
 - ADD'L WIDENING AT INTERSECTION

KENNEDY ROAD (Y.R. 3)



RECOMMENDED PAVEMENT STRUCTURE:
 100mm SP 12.5 FC2 (PGAC 64-28)
 100mm SP 25.0 (PGAC 64-28)
 150mm GRANULAR A
 500mm GRANULAR B - TYPE I



223.69 11+280	224.019 11+300	223.80 11+320	224.119 11+340	223.91 11+360	224.219 11+380	223.99 11+400	224.319 11+420	224.00 11+440	224.419 11+460	224.02 11+480	224.519 11+500	224.03 11+520	224.619 11+540	224.07 11+560	224.719 11+580	224.10 11+600	224.819 11+620	224.13 11+630
------------------	-------------------	------------------	-------------------	------------------	-------------------	------------------	-------------------	------------------	-------------------	------------------	-------------------	------------------	-------------------	------------------	-------------------	------------------	-------------------	------------------

NOTES:
 THE LOCATION OF UTILITIES IS APPROXIMATE ONLY. CONSULT THE RESPECTIVE MUNICIPAL AUTHORITIES AND UTILITY COMPANIES TO DETERMINE THE EXACT LOCATION OF THEIR UTILITIES. THE CONTRACTOR SHALL VERIFY THE LOCATION OF UTILITIES AND SHALL ADEQUATELY PROTECT AND SUPPORT THEM DURING CONSTRUCTION.

STORM SEWERS:
 1. INVERT ELEVATIONS SHOWN ARE AT CENTRE-LINE OF CATCHBASIN OR MANHOLE.
 2. PIPE LENGTHS SHOWN ARE CENTRE-LINE TO CENTRE-LINE OF CATCHBASIN OR MAINTENANCE HOLE.
 3. OFFSETS SHOWN ARE TO CENTRE OF CATCHBASIN OR MAINTENANCE COVER.

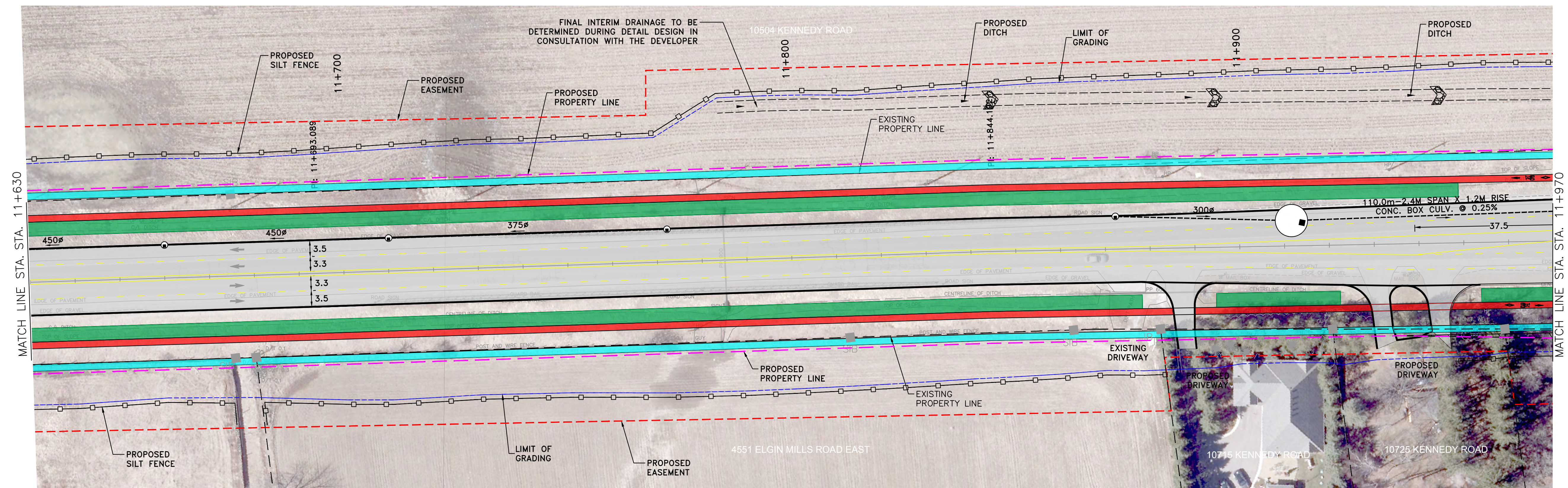
No.	DATE	REVISIONS	BY

BURNSIDE
 R.J. Burnside & Associates Limited
 6990 Creditview Road, Unit 2
 Mississauga, Ontario, L5N 8R9
 telephone (905) 821-1800
 fax (905) 821-1809
 web www.rjburnside.com

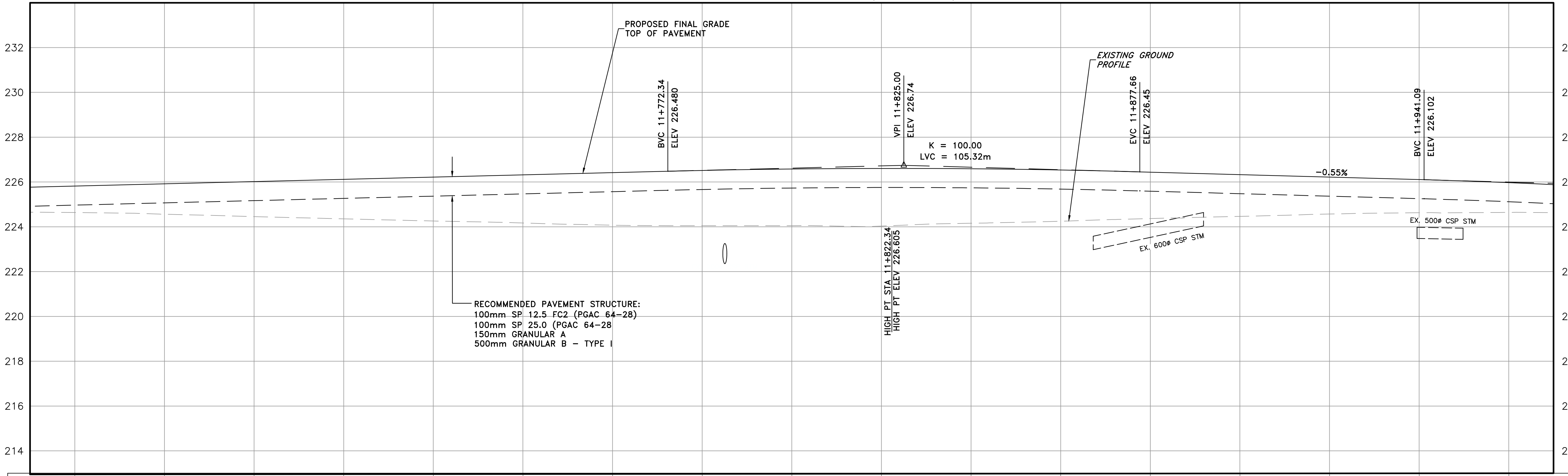
York Region Transportation Services

DESIGN R.B.	KENNEDY ROAD (Y.R. 3) NEW CONSTRUCTION STA. 11+280 TO STA. 11+630	DWG. NO. NC-PAP-05
DRAWN R.B.		CONT. NO. 2022-XXX
CHECKED J.A.		SHEET NO. 5

FILE: \\monty\Shared Work Areas\052314 - Warden-Kennedy EA\03 ProductionDwg\Kennedy Rd\052314 - PLAN PROFILE-KEN.dwg



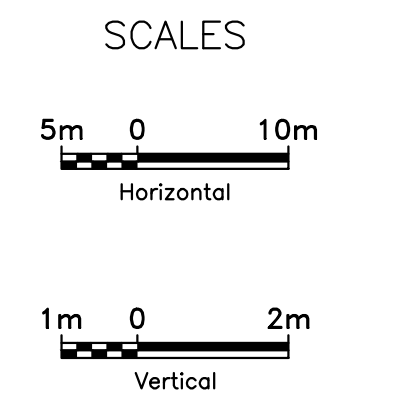
KENNEDY ROAD (Y.R. 3)



224.64 225.819	224.56 225.919	224.45 226.019	224.36 226.119	224.26 226.219	224.17 226.319	224.07 226.419	224.05 226.516	224.05 226.580	224.03 226.605	224.16 226.590	224.25 226.535	224.37 226.439	224.47 226.329	224.57 226.218	224.63 226.108	224.64 225.971
11+640	11+660	11+680	11+700	11+720	11+740	11+760	11+780	11+800	11+820	11+840	11+860	11+880	11+900	11+920	11+940	11+960

- NOTES**
1. ALL NEW INTERSECTION LAYOUTS ARE BASED ON THE COMPLETED COLLECTOR ROADS EA. FINAL LANE CONFIGURATION IS SUBJECT TO DEVELOPMENT APPROVALS.
 2. REFER TO TRCA EROSION AND SEDIMENT CONTROL GUIDE FOR URBAN CONSTRUCTION (2019) FOR THE DESIGN AND DESIGN ALTERATION OF ESC MEASURES.
 3. YORK REGION IS CURRENTLY COORDINATING WITH THE DEVELOPER AND UTILITY COMPANIES TO DETERMINE THE VARIOUS UNDERGROUND FACILITIES THAT WILL BE IMPLEMENTED WITHIN THE REGION'S ROAD ALLOWANCE. THE FINAL LOCATIONS OF THESE FACILITIES WILL BE CONFIRMED DURING DETAILED DESIGN.

- LEGEND**
- EXIST. RIGHT OF WAY
 - - - PROP. RIGHT OF WAY
 - - - PROP. LIMIT OF GRADING
 - - - PROP. EASEMENT
 - PROP. SILT FENCE
 - ▒ PROP. CHECK DAM
 - ▒ PROP. ASPHALT ROAD
 - ▒ PROP. PAVER MEDIAN
 - ▒ CYCLE TRACK/MUP
 - ▒ SIDEWALK
 - ▒ BIOSWALE
 - ▒ LID
 - ▒ BUS PAD
 - ▒ ADD'L WIDENING AT INTERSECTION



FILE: \\monty\Shared Work Areas\052314 - Warden-Kennedy EA\03 ProductionDwg\Kennedy Rd\052314 - PLAN PROFILE-KEN.dwg

NOTES:
THE LOCATION OF UTILITIES IS APPROXIMATE ONLY. CONSULT THE RESPECTIVE MUNICIPAL AUTHORITIES AND UTILITY COMPANIES TO DETERMINE THE EXACT LOCATION OF THEIR UTILITIES. THE CONTRACTOR SHALL VERIFY THE LOCATION OF UTILITIES AND SHALL ADEQUATELY PROTECT AND SUPPORT THEM DURING CONSTRUCTION.

- STORM SEWERS:**
1. INVERT ELEVATIONS SHOWN ARE AT CENTRE-LINE OF CATCHBASIN OR MANHOLE.
 2. PIPE LENGTHS SHOWN ARE CENTRE-LINE TO CENTRE-LINE OF CATCHBASIN OR MAINTENANCE HOLE.
 3. OFFSETS SHOWN ARE TO CENTRE OF CATCHBASIN OR MAINTENANCE COVER.

No.	DATE	REVISIONS	BY

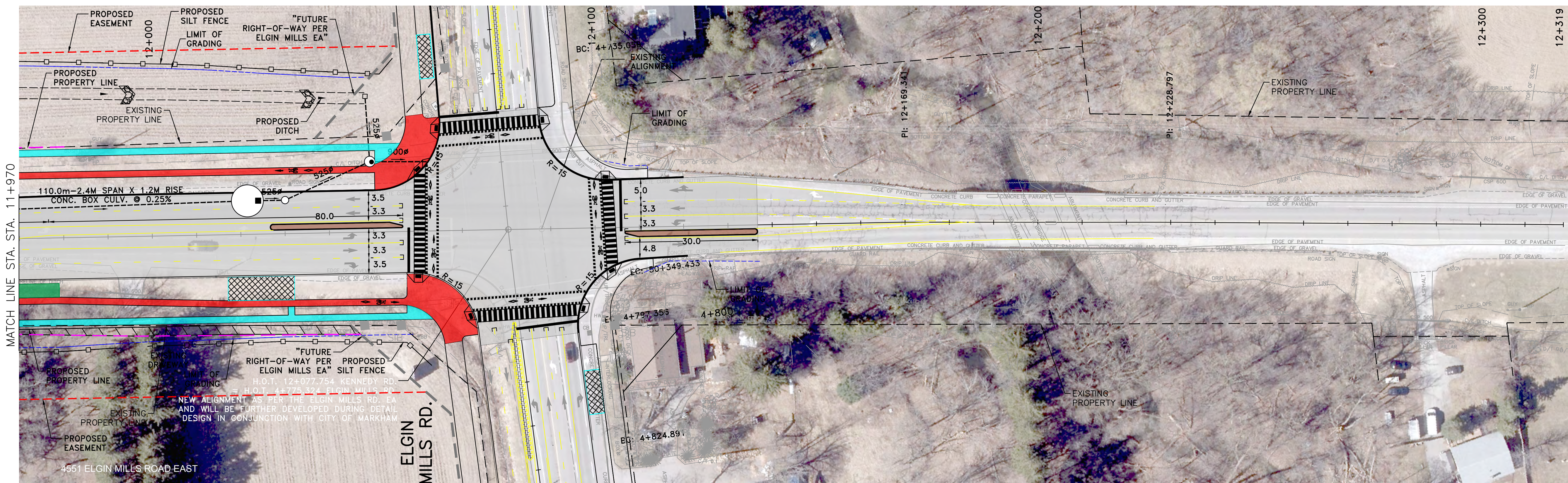
BURNSIDE
R.J. Burnside & Associates Limited
6990 Creditview Road, Unit 2
Mississauga, Ontario, L3N 8R9
telephone (905) 821-1800
fax (905) 821-1809
web www.rjburnside.com

York Region Transportation Services

DESIGN R.B.
DRAWN R.B.
CHECKED J.A.

KENNEDY ROAD (Y.R. 3)
NEW CONSTRUCTION
STA. 11+630 TO STA. 11+970

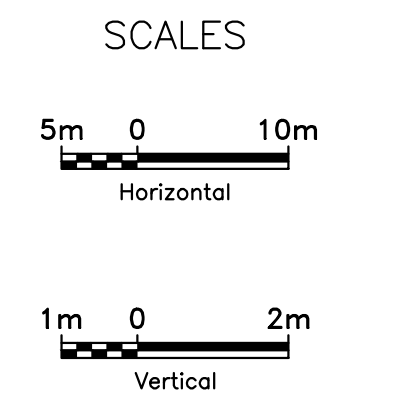
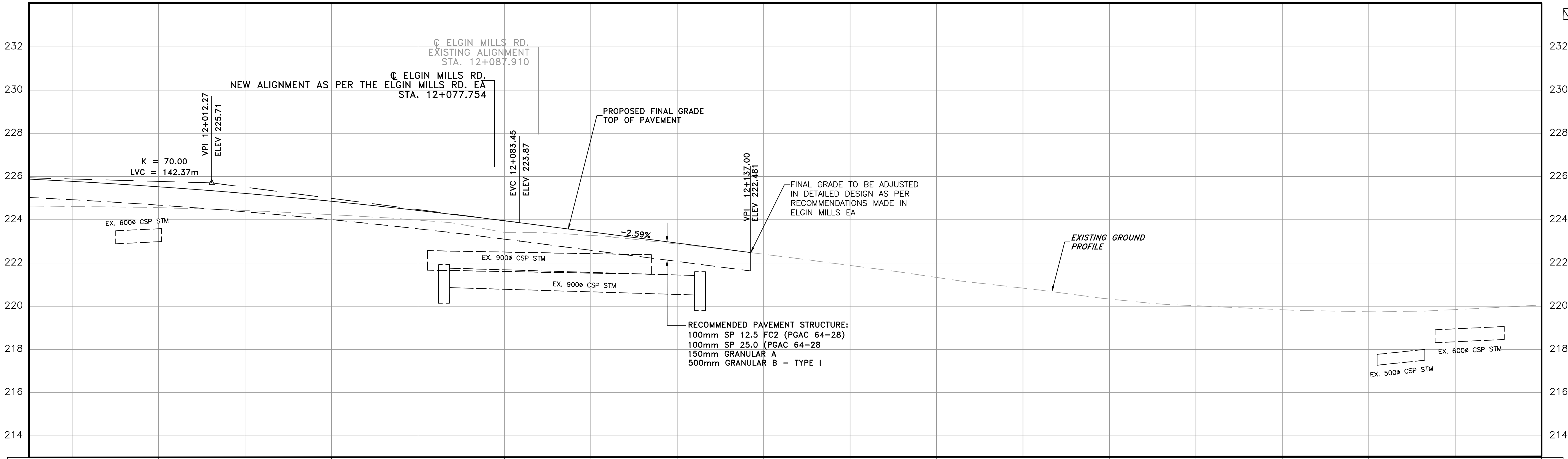
DWG. NO. NC-PAP-06
CONT. NO. 2022-XXX
SHEET NO. 6



- NOTES**
1. ALL NEW INTERSECTION LAYOUTS ARE BASED ON THE COMPLETED COLLECTOR ROADS EA. FINAL LANE CONFIGURATION IS SUBJECT TO DEVELOPMENT APPROVALS.
 2. REFER TO TRCA EROSION AND SEDIMENT CONTROL GUIDE FOR URBAN CONSTRUCTION (2019) FOR THE DESIGN AND DESIGN ALTERATION OF ESC MEASURES.
 3. YORK REGION IS CURRENTLY COORDINATING WITH THE DEVELOPER AND UTILITY COMPANIES TO DETERMINE THE VARIOUS UNDERGROUND FACILITIES THAT WILL BE IMPLEMENTED WITHIN THE REGION'S ROAD ALLOWANCE. THE FINAL LOCATIONS OF THESE FACILITIES WILL BE CONFIRMED DURING DETAILED DESIGN.

- LEGEND**
- EXIST. RIGHT OF WAY
 - PROP. RIGHT OF WAY
 - PROP. LIMIT OF GRADING
 - PROP. EASEMENT
 - PROP. SILT FENCE
 - PROP. CHECK DAM
 - PROP. ASPHALT ROAD
 - PROP. PAVER MEDIAN
 - CYCLE TRACK/MUP
 - SIDEWALK
 - BIOSWALE
 - LID
 - BUS PAD
 - ADD'L WIDENING AT INTERSECTION

KENNEDY ROAD (Y.R. 3)



224.62	225.778	224.56	225.528	224.43	225.220	224.24	224.855	223.98	224.434	223.42	223.955	223.28	223.438	222.88	222.921	222.41	221.89	221.33	220.84	220.33	220.02	219.84	219.74	219.84
11+980	12+000	12+020	12+040	12+060	12+080	12+100	12+120	12+140	12+160	12+180	12+200	12+220	12+240	12+260	12+280	12+300	12+320							

NOTES:
 THE LOCATION OF UTILITIES IS APPROXIMATE ONLY. CONSULT THE RESPECTIVE MUNICIPAL AUTHORITIES AND UTILITY COMPANIES TO DETERMINE THE EXACT LOCATION OF THEIR UTILITIES. THE CONTRACTOR SHALL VERIFY THE LOCATION OF UTILITIES AND SHALL ADEQUATELY PROTECT AND SUPPORT THEM DURING CONSTRUCTION.

- STORM SEWERS:**
1. INVERT ELEVATIONS SHOWN ARE AT CENTRE-LINE OF CATCHBASIN OR MANHOLE.
 2. PIPE LENGTHS SHOWN ARE CENTRE-LINE TO CENTRE-LINE OF CATCHBASIN OR MAINTENANCE HOLE.
 3. OFFSETS SHOWN ARE TO CENTRE OF CATCHBASIN OR MAINTENANCE COVER.

No.	DATE	REVISIONS	BY

BURNSIDE
 R.J. Burnside & Associates Limited
 6990 Creditview Road, Unit 2
 Mississauga, Ontario, L5N 8R9
 telephone (905) 821-1800
 fax (905) 821-1809
 web www.rjburnside.com

York Region Transportation Services

DESIGN R.B.	KENNEDY ROAD (Y.R. 3) NEW CONSTRUCTION STA. 11+970 TO STA. 12+320	DWG. NO. NC-PAP-07
DRAWN R.B.		CONT. NO. 2022-XXX
CHECKED J.A.		SHEET NO. 7