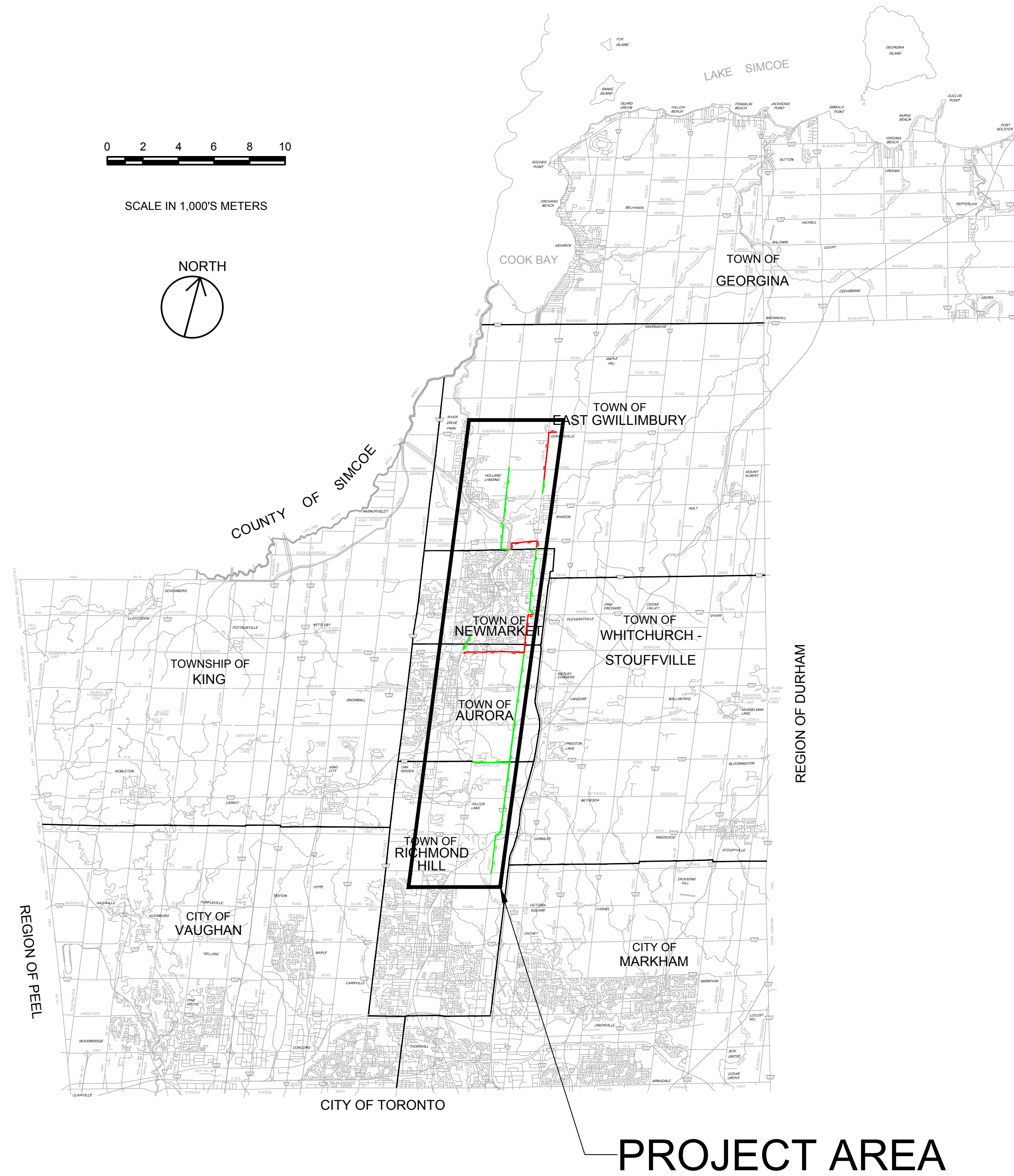




Public Works - Environmental Services

# YORK REGION SEWAGE WORKS - PROJECT REPORT NORTH YDSS EXPANSION THE REGIONAL MUNICIPALITY OF YORK



File Location: D:\ACAD\Proj\WorkDir\Projects\84058405-GHD-XX-DWG-CI-0001.dwg Last Saved: October 18, 2023, by s4642 Project: October 18, 2023

W. EMMERSON  
REGIONAL CHAIR

E. MAHONEY  
COMMISSIONER OF PUBLIC WORKS

OCTOBER 2023



DRAWING INDEX

GENERAL	DWG. No.	DRAWING DESCRIPTION
01	CI-D001	COVER SHEET
02	CI-D002	DRAWING LIST AND GENERAL NOTES
03	CI-D003	SITE PLAN

CIVIL

SHEET NO.	DRAWING NUMBER	DRAWING DESCRIPTION
04	CI-D004	Y9-A NEW MARKET EAST SPS - SITE PLAN
05	CI-D005	Y12-A 2ND CONCESSION NORTH GRAVITY SEWER
06	CI-D006	Y12-A 2ND CONCESSION NORTH GRAVITY SEWER STA. 0+000 TO 3+943
07	CI-D007	Y12-B 2ND CONCESSION SOUTH GRAVITY SEWER PLAN & PROFILE STA. 0+000 TO 2+089
08	CI-D008	Y9-B NEWMARKET EAST SPS FORCEMAIN STA. 0+000 TO 2+186
09	CI-D009	Y11-B QUEENSVILLE EAST SPS FORCEMAIN PLAN & PROFILE STA. 0+000 TO 1+800
10	CI-D010	Y11-B QUEENSVILLE EAST SPS FORCEMAIN PLAN & PROFILE STA. 1+800 TO 3+877
11	CI-D011	Y3-B AURORA EAST SPS - SITE PLAN
12	CI-D012	Y13-B MULOCK SPS - SITE PLAN
13	CI-D013	Y10 AURORA SPS GRAVITY SWR TWINNING PLAN & PROFILE STA. 0+000 TO 0+879
14	CI-D014	Y13-A LESLIE ST TRNK SWR PHASE 3 PLAN & PROFILE STA. 0+000 TO 2+600
15	CI-D015	Y13-A LESLIE ST TRNK SWR PHASE 3 PLAN & PROFILE STA. 2+600 TO 4+205
16	CI-D016	Y3-C AURORA EAST SPS F/M PLAN & PROFILE STA. 0+000 TO 1+800
17	CI-D017	Y3-C AURORA EAST SPS F/M PLAN & PROFILE STA. 1+800 TO 3+424
18	CI-D018	Y13-C MULOCK SPS F/M PLAN & PROFILE STA. 2+100 TO 4+500
19	CI-D019	Y1-A LESLIE STREET TRUNK SEWER PHASE 1&2 STA. 0+000 TO 3+100
20	CI-D020	Y1-A LESLIE STREET TRUNK SEWER PHASE 1&2 STA. 3+100 TO 6+100
21	CI-D021	Y1-A LESLIE STREET TRUNK SEWER PHASE 1&2 STA. 6+100 TO 9+100
22	CI-D022	Y1-A LESLIE STREET TRUNK SEWER PHASE 1&2 STA. 9+100 TO 12+100
23	CI-D023	Y1-A LESLIE STREET TRUNK SEWER PHASE 1&2 STA. 12+100 TO 14+720
24	CI-D024	Y14 BLOOMINGTON INCPR SWR PLAN & PROFILE STA. 0+000 TO 2+108

84405-GHD-XX-XX-DRG-CI-D002.dwg



GHD Ltd.  
455 Phillip Street  
Waterloo, Ontario N2L 3X2 Canada  
T 1 519 884 0510 F 1 519 884 0525  
Conditions of Use

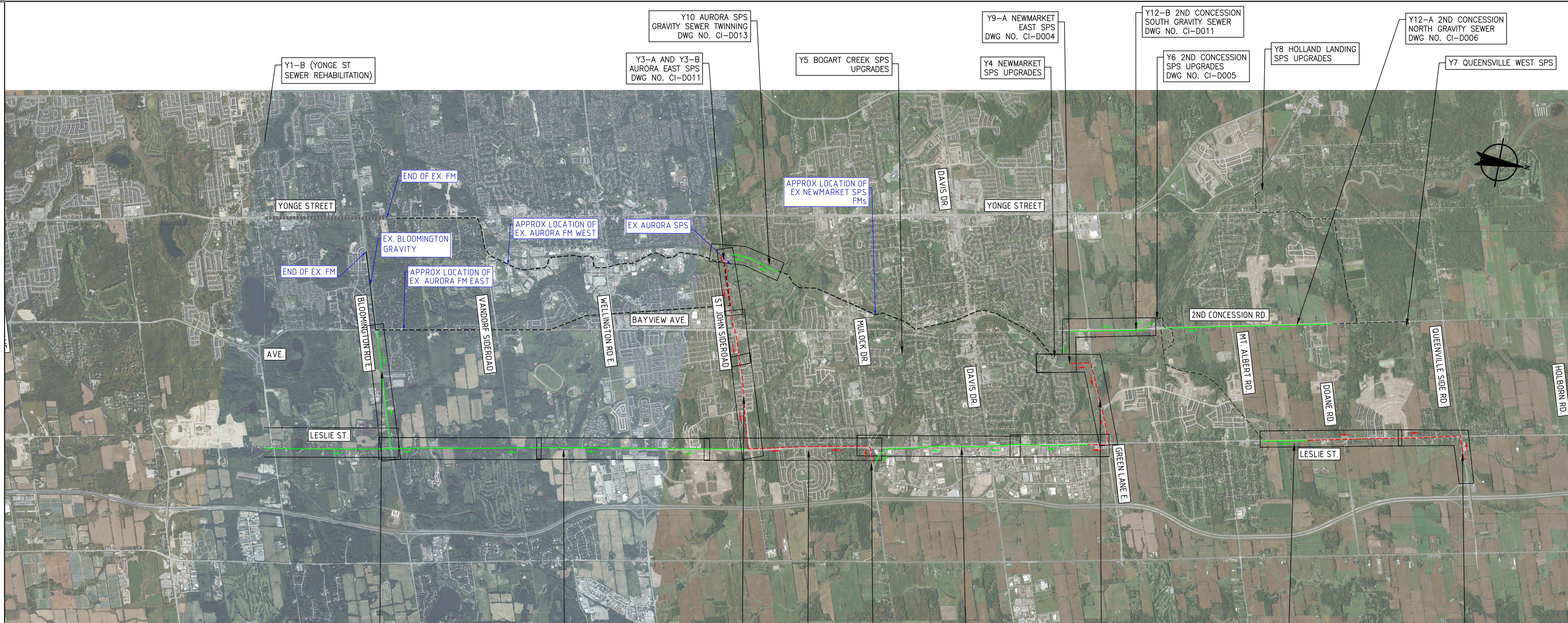
This document and the ideas and designs incorporated herein, as an instrument of professional service, is the property of GHD. This document may only be used by GHD's client (and any other person who GHD has agreed can use this document) for the purpose for which it was prepared and must not be used by any other person or for any other purpose.

No.	DATE	REVISIONS	BY
1	2023-09-29	ISSUED FOR YRSW PROJECT REPORT	T.C.



DATE APR. 2023	YORK REGION SEWAGE WORKS PROJECT NORTH YDSS EXPANSION	SCALE
DESIGN		DWG. NO. CI-D002
DRAWN E.Lee		CONT. NO. 0
CHECKED G.Procunier		SHEET NO. 2


DRAWING LIST AND  
GENERAL NOTES



- Y1-A1 LESLIE STREET TRUNK SEWER 1  
DWG NO. CI-D019  
DWG NO. CI-D020  
DWG NO. CI-D021
- Y14 - BLOOMINGTON GRAVITY SEWER  
DWG NO. CI-D024
- Y1-A2 LESLIE STREET TRUNK SEWER 2  
DWG NO. CI-D021  
DWG NO. CI-D022  
DWG NO. CI-D023
- Y3-C AURORA B SPS FORCEMAINS  
DWG NO. CI-D016  
DWG NO. CI-D017
- Y13-C MULOCK SPS FM  
DWG NO. CI-D018
- Y13-A LESLIE STREET TRUNK SEWER 3  
DWG NO. CI-D014  
DWG NO. CI-D015
- Y9-B NEWMARKET EAST SPS FM  
DWG NO. CI-D008
- Y11-B QUEENSVILLE EAST FM  
DWG NO. CI-D009  
DWG NO. CI-D010
- Y11-A QUEENSVILLE EAST SPS

- GENERAL NOTES:
1. THE HORIZONTAL AND VERTICAL ALIGNMENTS PRESENTED ON THIS SET OF DRAWINGS IS BASED ON A CONCEPTUAL DESIGN CREATED AS A PROOF OF CONCEPT TO CONVEY ANTICIPATED WASTEWATER FLOWS AS OUTLINED IN THE PROJECT REPORT. THE FINAL LOCATIONS AND ELEVATIONS OF PUMP STATIONS, GRAVITY SEWERS, FORCEMAINS, AND OTHER SUPPORTING INFRASTRUCTURE ARE CONCEPTUAL AND SUBJECT TO REVISION WITHIN THE STUDY AREAS FOLLOWING FURTHER FIELD INVESTIGATION, UTILITY COORDINATION, AND DESIGN.
  2. ALL ALIGNMENTS ARE SUBJECT TO CONSIDERATION OF CONCURRENT PROJECTS BY OTHER STAKEHOLDERS.
  3. THE VERTICAL PROFILE IS SUBJECT TO CHANGE BASED ON DETAILED ENGINEERING INVESTIGATIONS AND ENGINEERING ANALYSIS. DEPTH OF SEWER INVERTS AND SHAFTS MAY BE ADJUSTED TO SUIT HYDRAULIC IMPROVEMENTS, CLEARANCES BELOW WATER BODIES, EXISTING INFRASTRUCTURE, AND GEOTECHNICAL AND HYDROGEOLOGICAL CONDITIONS.
  4. POTENTIAL COMPOUND AREAS ARE IDENTIFIED ON THE DRAWINGS AND ARE SUBJECT TO CHANGE IN SIZE, SHAPE, LOCATION AND QUANTITY IN ORDER TO SUPPORT CONSTRUCTION ACTIVITIES.
  5. WHERE CONCEPT DESIGN LOCATIONS ARE LOCATED WITHIN CONSERVATION AUTHORITY REGULATED AREAS, FURTHER INVESTIGATION WILL BE UNDERTAKEN TO DETERMINE AND MINIMIZE IMPACTS. IF CONSTRUCTION WITHIN A FLOODPLAIN AREA CANNOT BE AVOIDED THEN THE LOCATIONS WHERE FLOODPLAIN STORAGE OR COMPENSATION COULD BE ACCOMMODATED WILL BE IDENTIFIED DURING DESIGN.
  6. REGION OF YORK ORTHOPHOTOGRAPHY PROVIDED BY ArcGIS

THE LOCATION OF UTILITIES IS APPROXIMATE ONLY, AND THE EXACT LOCATION SHOULD BE DETERMINED BY CONSULTING THE MUNICIPAL AUTHORITIES AND UTILITY COMPANIES CONCERNED.



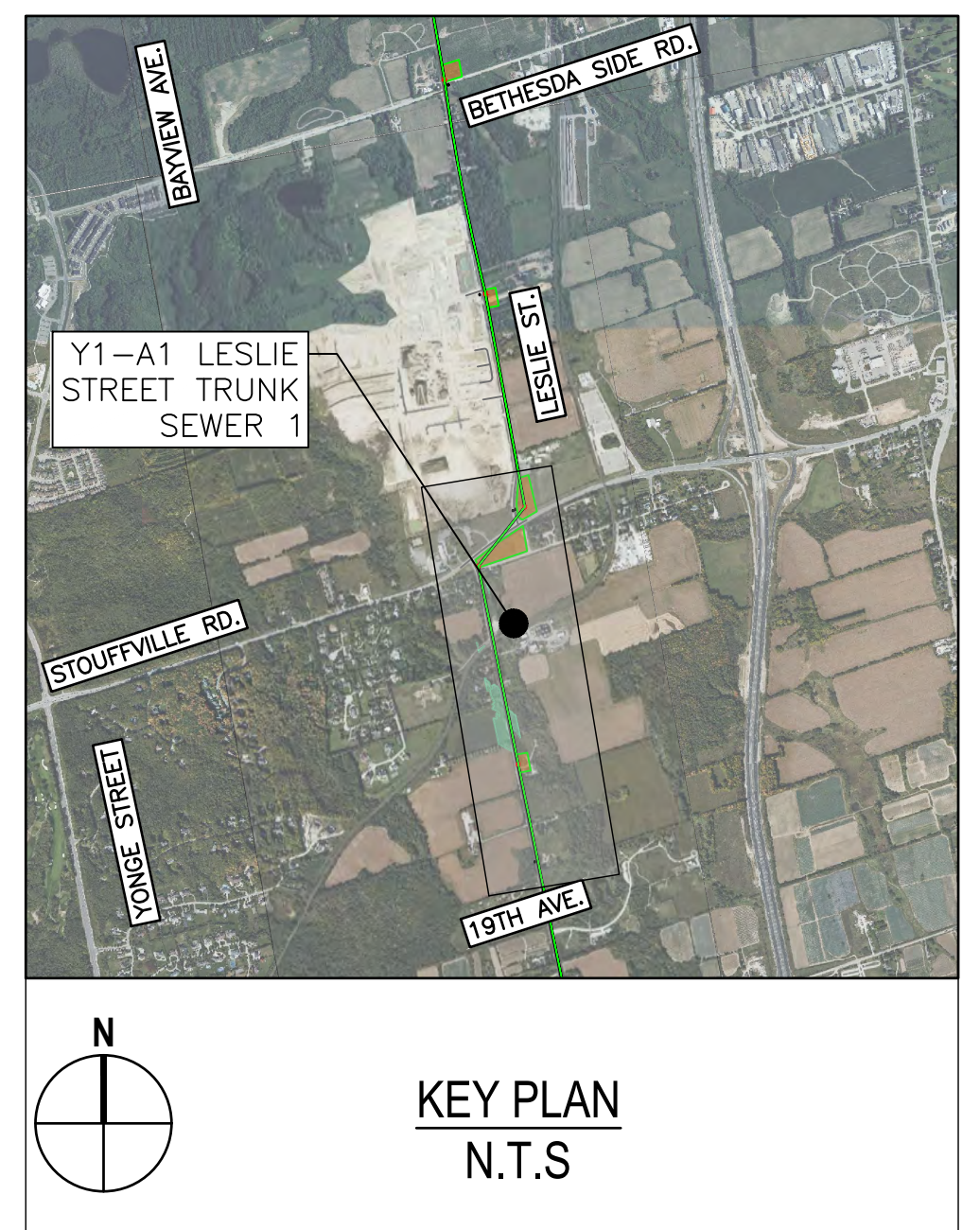
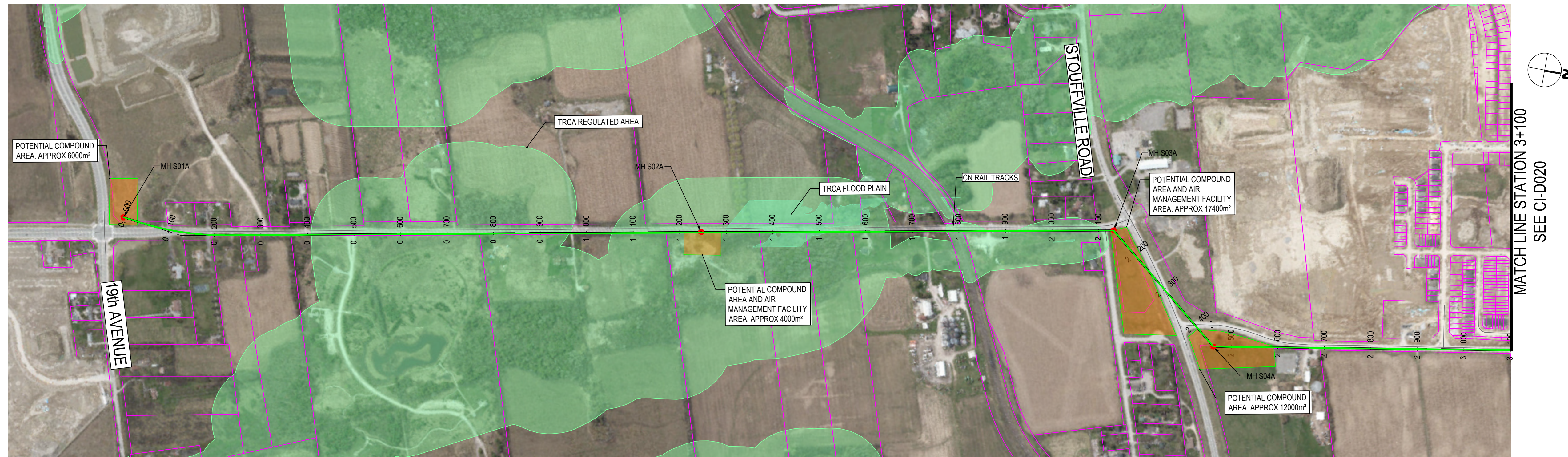
GHD Ltd.  
455 Philip Street  
Waterloo, Ontario N2L 3X2 Canada  
T 1 519 884 0510 F 1 519 884 0525  
Conditions of Use  
This document and the ideas and designs incorporated herein, as an instrument of professional service, is the property of GHD. This document may only be used by GHD's client (and any other person who GHD has agreed can use this document) for the purpose for which it was prepared and must not be used by any other person or for any other purpose.

No.	DATE	REVISIONS	BY
1	2023-09-29	ISSUED FOR YRSW PROJECT REPORT	T.C.

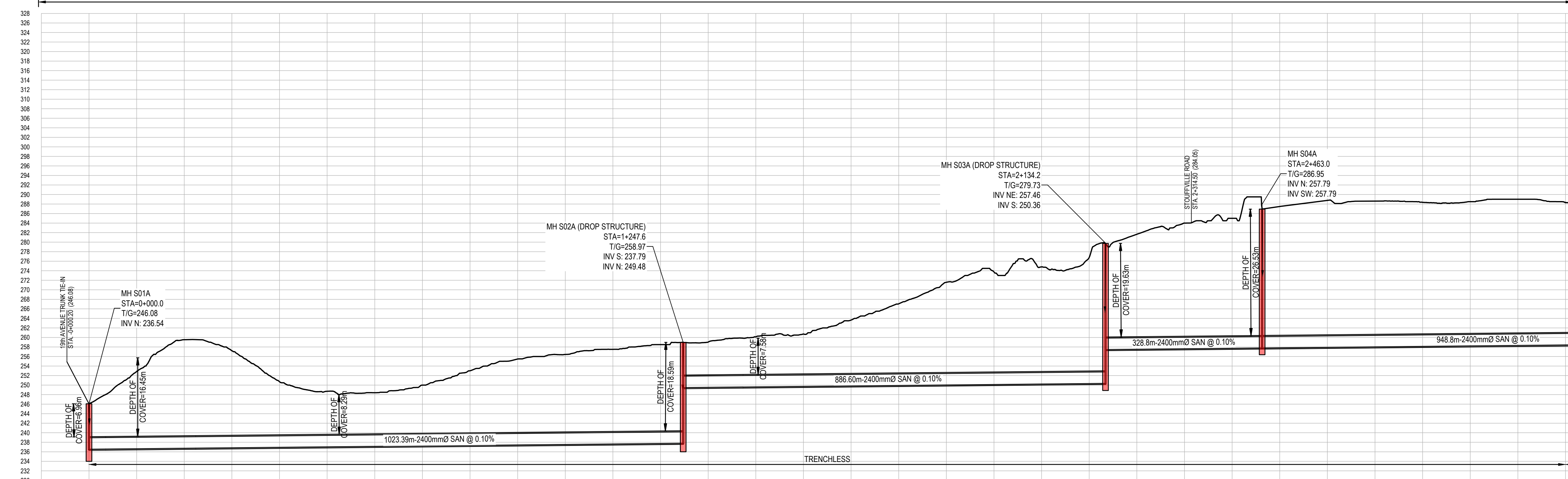


DATE MAY 2023	YORK REGION SEWAGE WORKS NORTH YDSS EXPANSION  YDSS NORTH EXPANSION SITE PLAN	SCALE NTS
DESIGN		DWG. NO. CI-D003
DRAWN E.Lee		CONT. NO. 0
CHECKED G.Procunier		SHEET NO. 3

B:4405-GHD-XX-XX-DRG-CI-D003.dwg



LESLIE STREET  
Y1-A1 SEGMENT



LEGEND	
SYMBOLS	DESCRIPTION
	PROTECTED COUNTRY SIDE
	LSRCA / TRCA REGULATORY LIMIT
	SHAFT LOCATION
	GRAVITY ALIGNMENT
	FORCEMAIN ALIGNMENT
	LAND PARCELS
	CONSTRUCTION COMPOUND

- GENERAL NOTES:
- THE HORIZONTAL AND VERTICAL ALIGNMENTS PRESENTED ON THIS SET OF DRAWINGS IS BASED ON A CONCEPTUAL DESIGN CREATED AS A PROOF OF CONCEPT TO CONVEY ANTICIPATED WASTEWATER FLOWS AS OUTLINED IN THE PROJECT REPORT. THE FINAL LOCATIONS AND ELEVATIONS OF PUMP STATIONS, GRAVITY SEWERS, FORCEMAINS, AND OTHER SUPPORTING INFRASTRUCTURE ARE CONCEPTUAL AND SUBJECT TO REVISION WITHIN THE STUDY AREAS FOLLOWING FURTHER FIELD INVESTIGATION, UTILITY COORDINATION, AND DESIGN.
  - ALL ALIGNMENTS ARE SUBJECT TO CONSIDERATION OF CONCURRENT PROJECTS BY OTHER STAKEHOLDERS.
  - THE VERTICAL PROFILE IS SUBJECT TO CHANGE BASED ON DETAILED ENGINEERING INVESTIGATIONS AND ENGINEERING ANALYSIS. DEPTH OF SEWER INVERTS AND SHAFTS MAY BE ADJUSTED TO SUIT HYDRAULIC IMPROVEMENTS, CLEARANCES BELOW WATER BODIES, EXISTING INFRASTRUCTURE, AND GEOTECHNICAL AND HYDROGEOLOGICAL CONDITIONS.
  - POTENTIAL COMPOUND AREAS ARE IDENTIFIED ON THE DRAWINGS AND ARE SUBJECT TO CHANGE IN SIZE, SHAPE, LOCATION AND QUANTITY IN ORDER TO SUPPORT CONSTRUCTION ACTIVITIES.
  - WHERE CONCEPT DESIGN LOCATIONS ARE LOCATED WITHIN CONSERVATION AUTHORITY REGULATED AREAS, FURTHER INVESTIGATION WILL BE UNDERTAKEN TO DETERMINE AND MINIMIZE IMPACTS. IF CONSTRUCTION WITHIN A FLOODPLAIN AREA CANNOT BE AVOIDED THEN THE LOCATIONS WHERE FLOODPLAIN STORAGE OR COMPENSATION COULD BE ACCOMMODATED WILL BE IDENTIFIED DURING DESIGN.
  - REGION OF YORK ORTHOPHOTOGRAPHY PROVIDED BY ArcGIS

EXISTING GROUND ELEVATIONS	INVERT ELEVATIONS
246.08	236.58
252.64	236.58
256.62	236.76
257.19	236.76
257.71	
256.70	
256.40	
249.89	
253.00	
255.46	
256.47	
257.80	
258.67	237.79
259.02	249.48
258.12	249.50
259.72	249.50
258.05	
257.08	
271.67	
272.75	
274.67	
278.66	250.36
291.06	257.46
284.60	
285.67	
287.46	257.79
288.78	257.79
288.67	
288.05	
288.60	
288.60	
288.32	

8:4405-GHD--XX--DRG--CI--D019.dwg

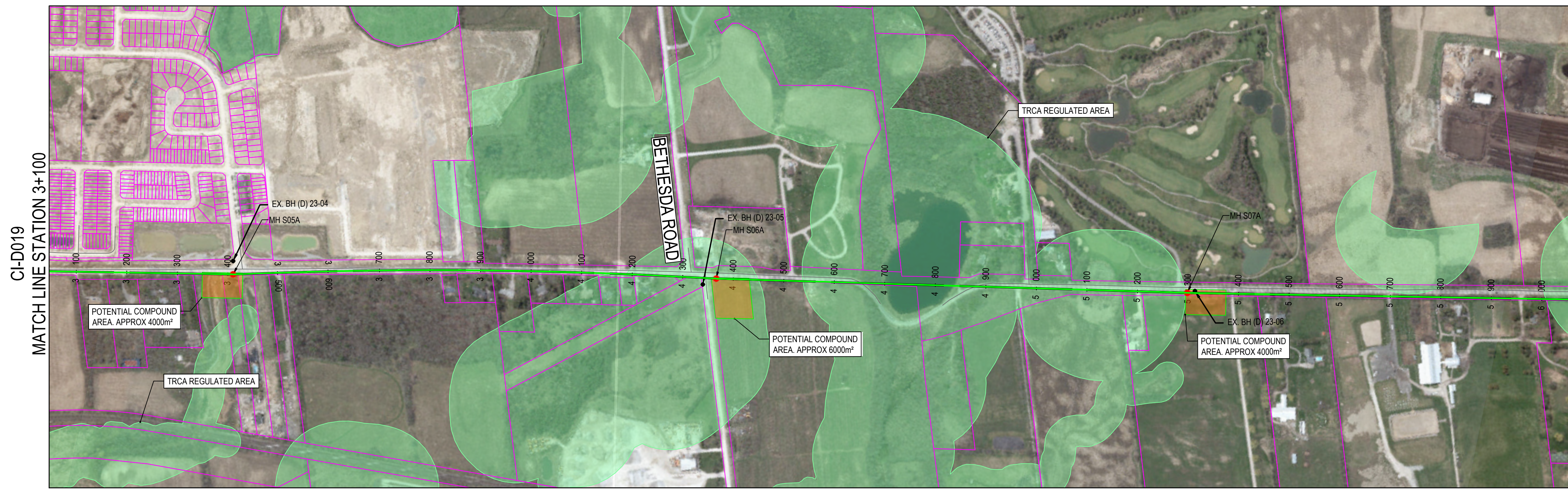
THE LOCATION OF UTILITIES IS APPROXIMATE ONLY, AND THE EXACT LOCATION SHOULD BE DETERMINED BY CONSULTING THE MUNICIPAL AUTHORITIES AND UTILITY COMPANIES CONCERNED.

GHD Ltd.  
455 Phillip Street  
Waterloo, Ontario N2L 3X2 Canada  
T 1 519 884 0510 F 1 519 884 0525  
Conditions of Use  
This document and the ideas and designs incorporated herein, as an instrument of professional service, is the property of GHD. This document may only be used by GHD's client (and any other person who GHD has agreed can use this document) for the purpose for which it was prepared and must not be used by any other person or for any other purpose.

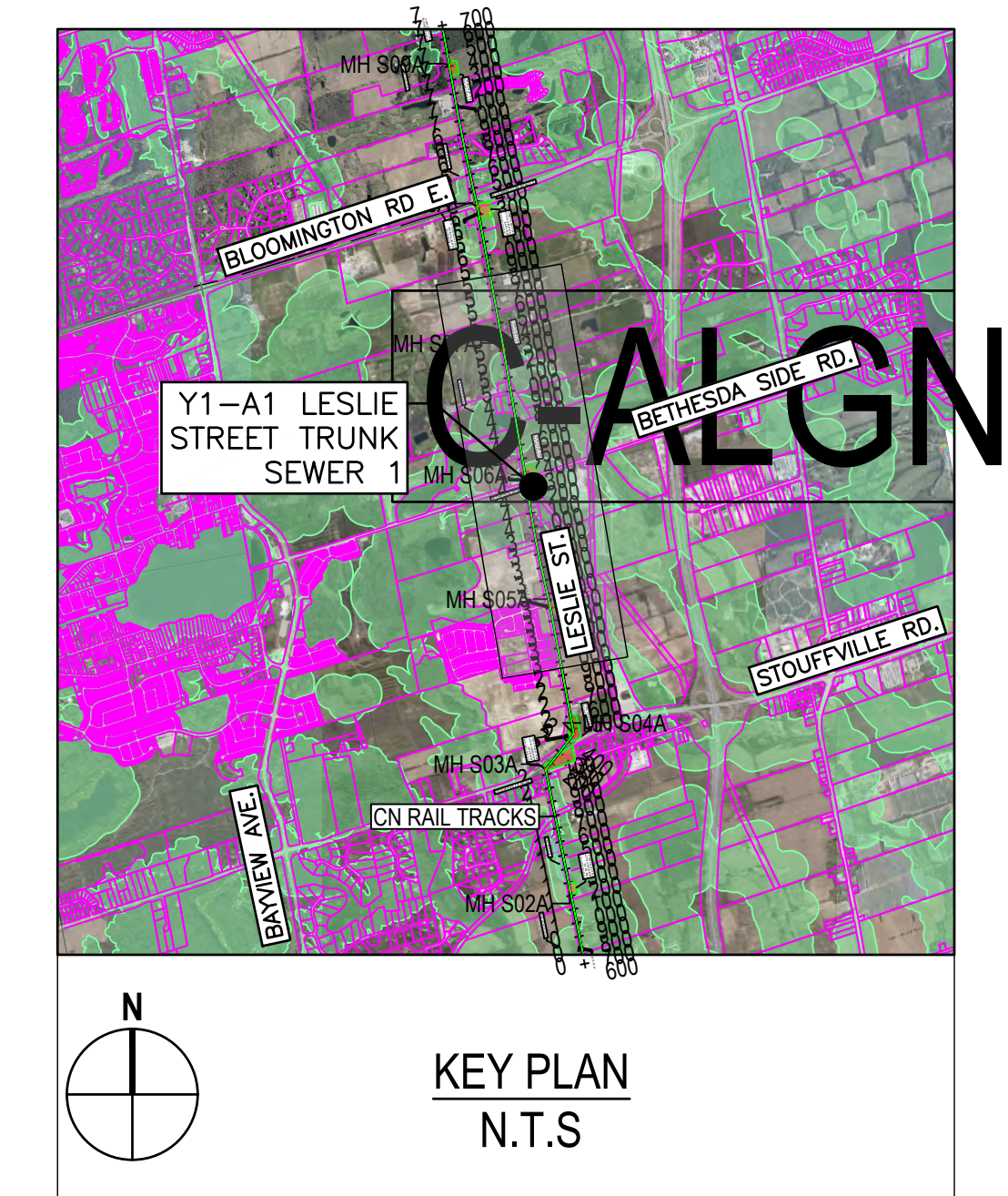
No.	DATE	REVISIONS	BY
1	2023-09-29	ISSUED FOR YRSW PROJECT REPORT	T.C.

DATE APR. 2023	YORK REGION SEWAGE WORKS NORTH YDSS EXPANSION	SCALE 1:5000
DESIGN		DWG. NO. CI-D019
DRAWN E.Lee		CONT. NO. 0
CHECKED M.Blouin		SHEET NO. 19

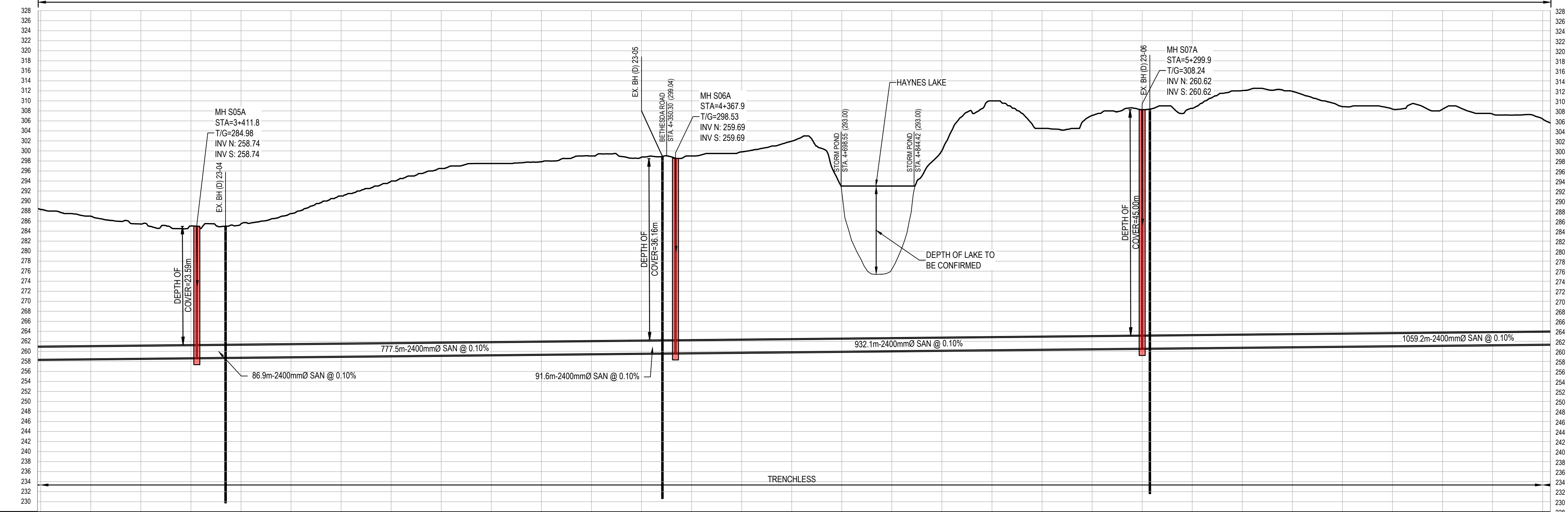
Y1-A LESLIE ST TRUNK SWR  
PHASES 1&2 PLAN & PROFILE  
STA. 0+000 TO 3+100



MATCH LINE STATION 3+100  
 MATCH LINE STATION 6+100  
 SEE CH-D021



**LESLIE STREET  
 Y1-A1 SEGMENT**



STATION	EXISTING GROUND ELEVATIONS	INVERT ELEVATIONS
3+100	286.27	
3+200	286.89	
3+300	286.47	
3+400	286.07	258.74
3+500	286.46	258.74
3+600	287.50	
3+700	291.07	
3+800	283.09	
3+900	286.59	
4+000	287.59	
4+100	287.65	
4+200	288.07	
4+300	286.77	259.60
4+400	286.07	259.63
4+500	286.82	
4+600	307.96	
4+700	283.07	
4+800	283.07	
4+900	300.02	
5+000	310.07	
5+100	304.59	
5+200	307.70	
5+300	308.24	260.62
5+400	308.67	260.62
5+500	312.26	
5+600	317.89	
5+700	308.64	
5+800	308.89	
5+900	308.24	
6+000	307.86	
6+100	308.27	

**LEGEND**

SYMBOLS	DESCRIPTION
(Green line)	PROTECTED COUNTRY SIDE
(Red line)	TRCA REGULATORY LIMIT
(Red circle)	SHAFT LOCATION
(Green line)	GRAVITY ALIGNMENT
(Red line)	FORCEMAIN ALIGNMENT
(Pink outline)	LAND PARCELS
(Yellow outline)	CONSTRUCTION COMPOUND

- GENERAL NOTES:
- THE HORIZONTAL AND VERTICAL ALIGNMENTS PRESENTED ON THIS SET OF DRAWINGS IS BASED ON A CONCEPTUAL DESIGN CREATED AS A PROOF OF CONCEPT TO CONVEY ANTICIPATED WASTEWATER FLOWS AS OUTLINED IN THE PROJECT REPORT. THE FINAL LOCATIONS AND ELEVATIONS OF PUMP STATIONS, GRAVITY SEWERS, FORCEMAINS, AND OTHER SUPPORTING INFRASTRUCTURE ARE CONCEPTUAL AND SUBJECT TO REVISION WITHIN THE STUDY AREAS FOLLOWING FURTHER FIELD INVESTIGATION, UTILITY COORDINATION, AND DESIGN.
  - ALL ALIGNMENTS ARE SUBJECT TO CONSIDERATION OF CONCURRENT PROJECTS BY OTHER STAKEHOLDERS.
  - THE VERTICAL PROFILE IS SUBJECT TO CHANGE BASED ON DETAILED ENGINEERING INVESTIGATIONS AND ENGINEERING ANALYSIS. DEPTH OF SEWER INVERTS AND SHAFTS MAY BE ADJUSTED TO SUIT HYDRAULIC IMPROVEMENTS, CLEARANCES BELOW WATER BODIES, EXISTING INFRASTRUCTURE, AND GEOTECHNICAL AND HYDROGEOLOGICAL CONDITIONS.
  - POTENTIAL COMPOUND AREAS ARE IDENTIFIED ON THE DRAWINGS AND ARE SUBJECT TO CHANGE IN SIZE, SHAPE, LOCATION AND QUANTITY IN ORDER TO SUPPORT CONSTRUCTION ACTIVITIES.
  - WHERE CONCEPT DESIGN LOCATIONS ARE LOCATED WITHIN CONSERVATION AUTHORITY REGULATED AREAS, FURTHER INVESTIGATION WILL BE UNDERTAKEN TO DETERMINE AND MINIMIZE IMPACTS. IF CONSTRUCTION WITHIN A FLOODPLAIN AREA CANNOT BE AVOIDED THEN THE LOCATIONS WHERE FLOODPLAIN STORAGE OR COMPENSATION COULD BE ACCOMMODATED WILL BE IDENTIFIED DURING DESIGN.
  - REGION OF YORK ORTHOPHOTOGRAPHY PROVIDED BY ArcGIS

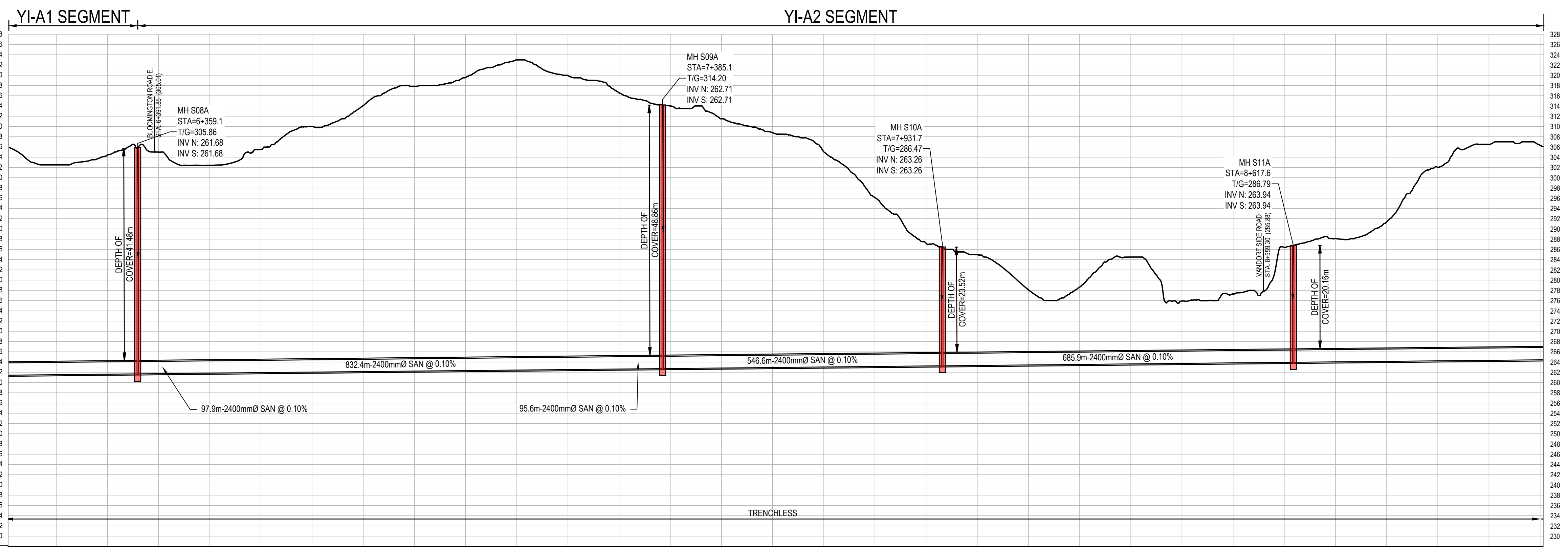
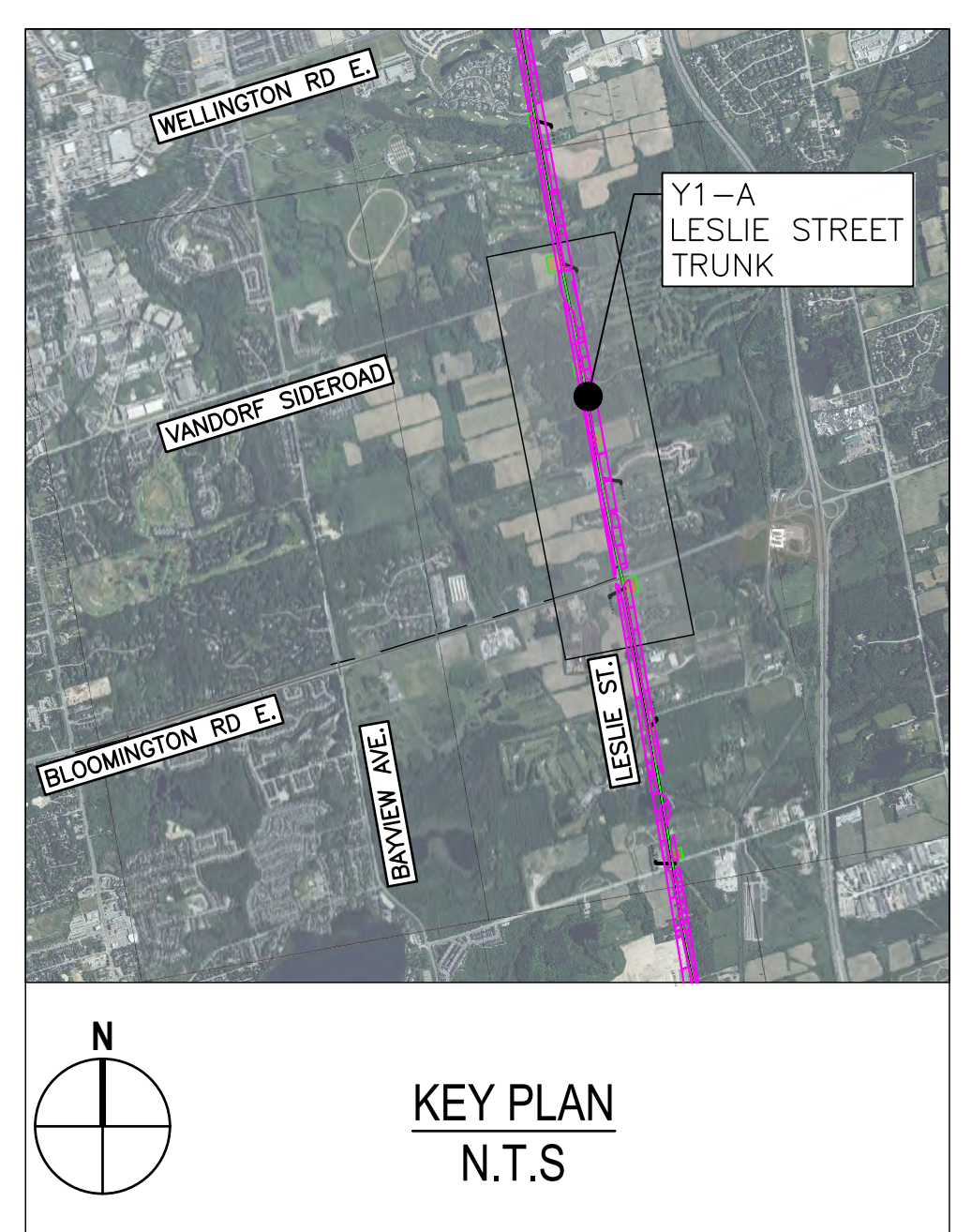
84405-GHD-XX-DRG-CI-D020.dwg

THE LOCATION OF UTILITIES IS APPROXIMATE ONLY, AND THE EXACT LOCATION SHOULD BE DETERMINED BY CONSULTING THE MUNICIPAL AUTHORITIES AND UTILITY COMPANIES CONCERNED.

GHD Ltd.  
 455 Phillip Street  
 Waterloo, Ontario N2L 3X2 Canada  
 T 1 519 884 0510 F 1 519 884 0525  
 Conditions of Use  
 This document and the ideas and designs incorporated herein, as an instrument of professional service, is the property of GHD. This document may only be used by GHD's client (and any other person who GHD has agreed can use this document) for the purpose for which it was prepared and must not be used by any other person or for any other purpose.

No.	DATE	REVISIONS	BY
1	2023-09-29	ISSUED FOR YRSW PROJECT REPORT	T.C.

DATE APR. 2023	YORK REGION SEWAGE WORKS NORTH YDSS EXPANSION	SCALE 1:5000
DESIGN H.M	Y1-A LESLIE ST TRUNK SWR PHASES 1&2 PLAN & PROFILE STA. 3+100 TO 6+100	DWG. NO. CI-D020
DRAWN E.Lee		CONT. NO. 0
CHECKED M.Blouin		SHEET NO. 20



LEGEND	
SYMBOLS	DESCRIPTION
	PROTECTED COUNTRY SIDE
	LSRCA / TRCA REGULATORY LIMIT
	SHAFT LOCATION
	GRAVITY ALIGNMENT
	FORCEMAIN ALIGNMENT
	LAND PARCELS
	CONSTRUCTION COMPOUND

- GENERAL NOTES:
- THE HORIZONTAL AND VERTICAL ALIGNMENTS PRESENTED ON THIS SET OF DRAWINGS IS BASED ON A CONCEPTUAL DESIGN CREATED AS A PROOF OF CONCEPT TO CONVEY ANTICIPATED WASTEWATER FLOWS AS OUTLINED IN THE PROJECT REPORT. THE FINAL LOCATIONS AND ELEVATIONS OF PUMP STATIONS, GRAVITY SEWERS, FORCEMAINS, AND OTHER SUPPORTING INFRASTRUCTURE ARE CONCEPTUAL AND SUBJECT TO REVISION WITHIN THE STUDY AREA FOLLOWING FURTHER FIELD INVESTIGATION, UTILITY COORDINATION, AND DESIGN.
  - ALL ALIGNMENTS ARE SUBJECT TO CONSIDERATION OF CONCURRENT PROJECTS BY OTHER STAKEHOLDERS.
  - THE VERTICAL PROFILE IS SUBJECT TO CHANGE BASED ON DETAILED ENGINEERING INVESTIGATIONS AND ENGINEERING ANALYSIS. DEPTH OF SEWER INVERTS AND SHAFTS MAY BE ADJUSTED TO SUIT HYDRAULIC IMPROVEMENTS, CLEARANCES BELOW WATER BODIES, EXISTING INFRASTRUCTURE, AND GEOTECHNICAL AND HYDROGEOLOGICAL CONDITIONS.
  - POTENTIAL COMPOUND AREAS ARE IDENTIFIED ON THE DRAWINGS AND ARE SUBJECT TO CHANGE IN SIZE, SHAPE, LOCATION AND QUANTITY IN ORDER TO SUPPORT CONSTRUCTION ACTIVITIES.
  - WHERE CONCEPT DESIGN LOCATIONS ARE LOCATED WITHIN CONSERVATION AUTHORITY REGULATED AREAS, FURTHER INVESTIGATION WILL BE UNDERTAKEN TO DETERMINE AND MINIMIZE IMPACTS. IF CONSTRUCTION WITHIN A FLOODPLAIN AREA CANNOT BE AVOIDED THEN THE LOCATIONS WHERE FLOODPLAIN STORAGE OR COMPENSATION COULD BE ACCOMMODATED WILL BE IDENTIFIED DURING DESIGN.
  - REGION OF YORK ORTHOPHOTOGRAPHY PROVIDED BY ArcGIS

EXISTING GROUND ELEVATIONS	INVERT ELEVATIONS
302.97	
304.47	261.68
304.69	261.78
305.47	
305.49	
305.60	
305.68	
305.78	
305.81	
305.83	262.61
305.87	262.71
305.89	
305.91	
305.93	
305.95	
305.97	
305.99	
306.01	
306.03	
306.05	
306.07	
306.09	
306.11	
306.13	
306.15	
306.17	
306.19	
306.21	
306.23	
306.25	
306.27	
306.29	
306.31	
306.33	
306.35	
306.37	
306.39	
306.41	
306.43	
306.45	
306.47	
306.49	
306.51	
306.53	
306.55	
306.57	
306.59	
306.61	
306.63	
306.65	
306.67	
306.69	
306.71	
306.73	
306.75	
306.77	
306.79	
306.81	
306.83	
306.85	
306.87	
306.89	
306.91	
306.93	
306.95	
306.97	
306.99	
307.01	
307.03	
307.05	
307.07	
307.09	
307.11	
307.13	
307.15	
307.17	
307.19	
307.21	
307.23	
307.25	
307.27	
307.29	
307.31	
307.33	
307.35	
307.37	
307.39	
307.41	
307.43	
307.45	
307.47	
307.49	
307.51	
307.53	
307.55	
307.57	
307.59	
307.61	
307.63	
307.65	
307.67	
307.69	
307.71	
307.73	
307.75	
307.77	
307.79	
307.81	
307.83	
307.85	
307.87	
307.89	
307.91	
307.93	
307.95	
307.97	
307.99	
308.01	
308.03	
308.05	
308.07	
308.09	
308.11	
308.13	
308.15	
308.17	
308.19	
308.21	
308.23	
308.25	
308.27	
308.29	
308.31	
308.33	
308.35	
308.37	
308.39	
308.41	
308.43	
308.45	
308.47	
308.49	
308.51	
308.53	
308.55	
308.57	
308.59	
308.61	
308.63	
308.65	
308.67	
308.69	
308.71	
308.73	
308.75	
308.77	
308.79	
308.81	
308.83	
308.85	
308.87	
308.89	
308.91	
308.93	
308.95	
308.97	
308.99	
309.01	
309.03	
309.05	
309.07	
309.09	
309.11	
309.13	
309.15	
309.17	
309.19	
309.21	
309.23	
309.25	
309.27	
309.29	
309.31	
309.33	
309.35	
309.37	
309.39	
309.41	
309.43	
309.45	
309.47	
309.49	
309.51	
309.53	
309.55	
309.57	
309.59	
309.61	
309.63	
309.65	
309.67	
309.69	
309.71	
309.73	
309.75	
309.77	
309.79	
309.81	
309.83	
309.85	
309.87	
309.89	
309.91	
309.93	
309.95	
309.97	
309.99	
310.01	

84405-GHD-XX-XX-DRG-CI-D021.dwg

THE LOCATION OF UTILITIES IS APPROXIMATE ONLY, AND THE EXACT LOCATION SHOULD BE DETERMINED BY CONSULTING THE MUNICIPAL AUTHORITIES AND UTILITY COMPANIES CONCERNED.



GHD Ltd.  
455 Phillip Street  
Waterloo, Ontario N2L 3X2 Canada  
T 1 519 884 0510 F 1 519 884 0525  
Conditions of Use  
This document and the ideas and designs incorporated herein, as an instrument of professional service, is the property of GHD. This document may only be used by GHD's client (and any other person who GHD has agreed can use this document) for the purpose for which it was prepared and must not be used by any other person or for any other purpose.

No.	DATE	REVISIONS	BY
1	2023-09-29	ISSUED FOR YRSW PROJECT REPORT	T.C.



DATE	APR. 2023
DESIGN	H.M
DRAWN	E.Lee
CHECKED	M.Blouin

YORK REGION SEWAGE WORKS  
NORTH YDSS EXPANSION  
  
Y1-A LESLIE ST TRUNK SWR  
PHASES 1&2 PLAN & PROFILE  
STA. 6+100 TO 9+100

SCALE	1:5000
DWG. NO.	CI-D021
CONT. NO.	0
SHEET NO.	21