

York-Durham Regional Environmental Laboratory

Testing spells accountability




York Region





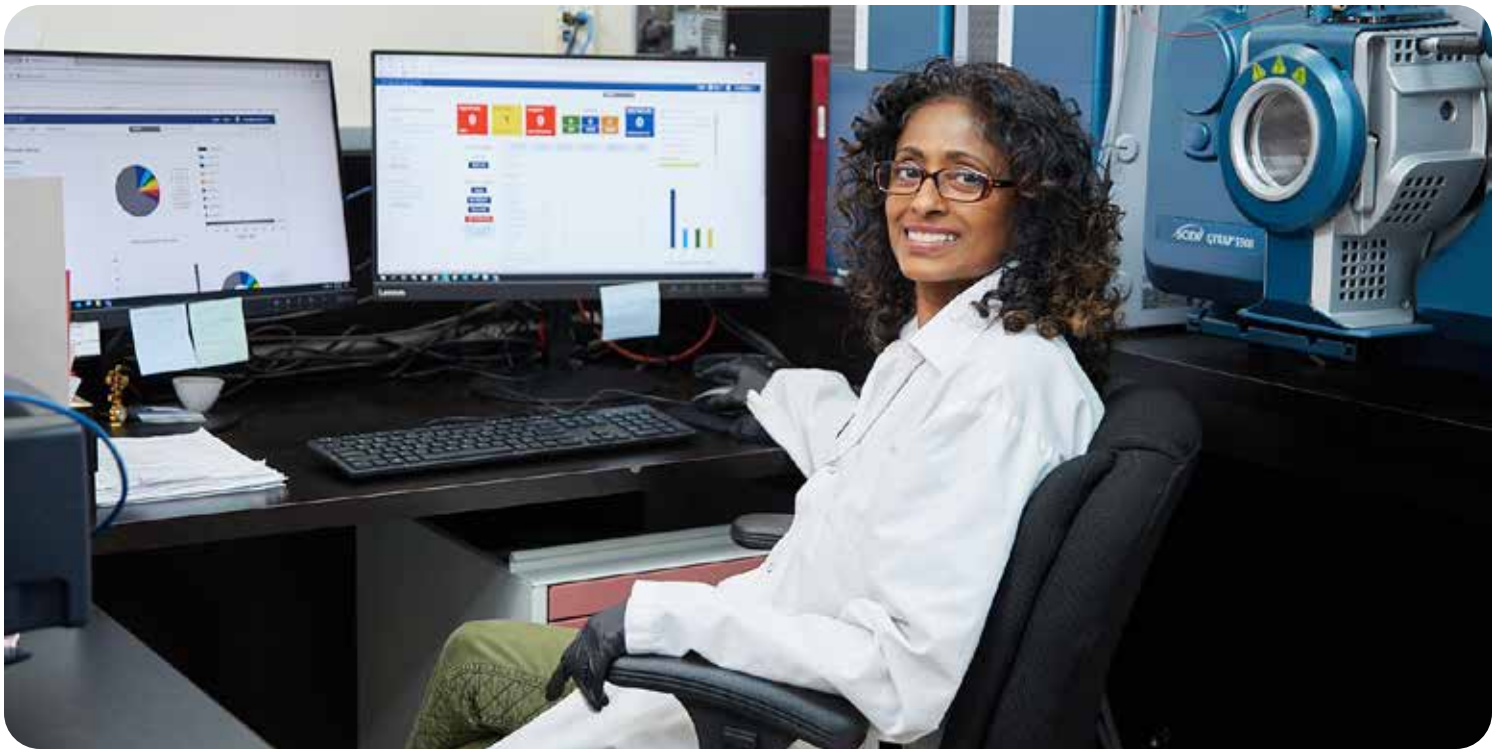
Meet the Regional Environmental Lab

Located in Pickering, Ontario, this state-of-the-art facility offers specialized testing of water and wastewater. Jointly owned and operated by York and Durham

Regions, the lab is accredited by the Canadian Association for Laboratory Accreditation (CALA). The lab is ISO/IEC 17025 certified and is limited to those tests on

the scope of testing. Also, the lab is licensed by the Ministry of the Environment, Conservation and Parks for the testing of drinking water.





Testing gives more than accurate results ... it gives peace of mind.

What's more important than safe drinking water? Ontarians can be assured the municipal water they drink meets or exceeds Provincial Regulations. And that means testing, testing and more testing.

In fact, the York-Durham Regional Environmental Laboratory (REL) processes some 18,000 drinking water samples annually. The lab plays a critical role in testing tap water and in wastewater testing

to make sure the effluent released into local waters protects the environment. The REL takes on this role with professionalism and a respect for the integrity of the process and the results.



Testing to meet Environmental Requirements

It all starts with highly skilled staff. The REL employs experienced professionals and uses advanced testing equipment to provide a range of analytical services for drinking water, wastewater and industrial monitoring programs. The laboratory performs tests to meet the requirements of:

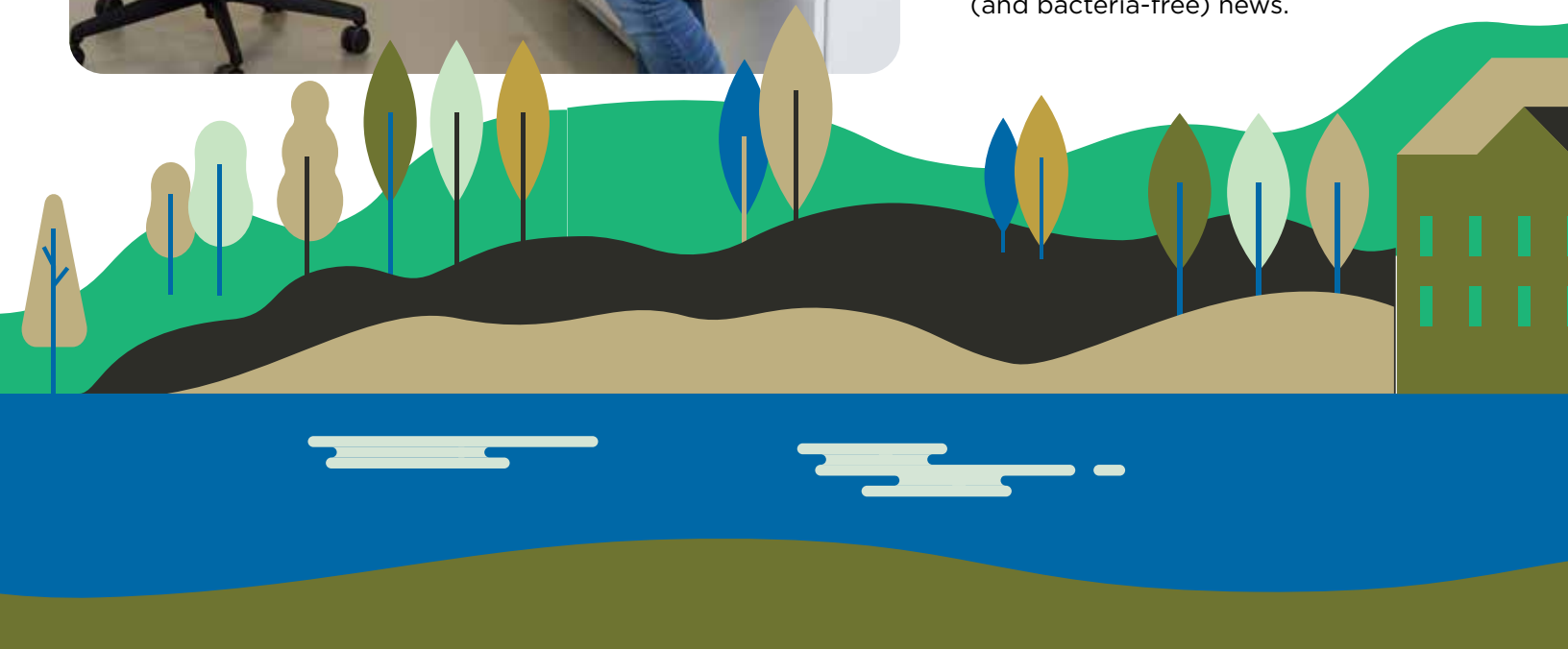
- The Safe Drinking Water Act
- Nutrient Management Act
- New Watermain Testing
- Lead Testing
- Environmental Compliance Approval
- Wastewater Regulations
- Sewer Use By-laws
- Landfill Monitoring
- Groundwater Under Direct Influence of Surface Water (GUDI)
- Well Monitoring



Case study prompts action

A rural property owner in Newcastle, Ontario, with a private well and septic system was concerned about the water quality. The family had just moved in and multiple water samples were proving inconclusive. The REL tested and found their well water contained *E.coli* and total coliform bacteria.

The homeowner consulted public health and a water treatment professional. After disinfecting the private well and installing a filtration system, REL again tested the water resulting in all clear (and bacteria-free) news.



Laboratory Testing Services

The REL processes over 65,000 environmental samples and conducts over 250,000 tests annually. The wide range of microbiological, organic and inorganic laboratory services has attracted clients from both the private and public sector including:

- Municipal water and wastewater facilities
- Industries and consultants with water and wastewater testing needs
- Property owners requiring drinking water or well water analysis



Frequently Asked Questions

1

What are the types of testing services offered by the REL?

The REL offers an array of environmental testing services on water and wastewater. For a full list, visit www.durham.ca/lab.



2

How do I submit a sample for testing?

Visit www.durham.ca/lab/sample for details on the paperwork required to submit a private or regulated sample. Samples can be delivered in person or by courier to the REL, 901 McKay Road, Pickering, Ontario L1W 3A3.

3

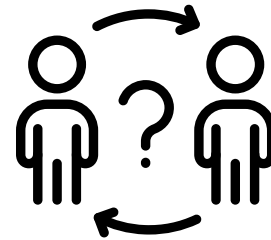
Will the lab courier bottles?

Yes, we can. There is an additional cost dependent on your location. Contact us for more information.

4

Where can I get a Chain of Custody form to submit with my samples?

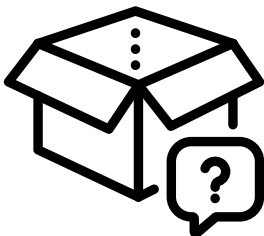
Depending upon what type of sample(s) are being submitted, i.e. regulated or unregulated, the Chain of Custody forms will differ. Contact us for assistance.



5

How much does it cost?

Costs are dependent on the service requested. Customers may pay on-site or over the phone with most major credit cards. For the price list, please visit www.durham.ca/lab or contact us.



6

How long does it take to receive the results?

Depending on the type of test, the standard turnaround time for results is 10 business days. Faster turnaround times may be arranged at an additional cost.

Common Testing Packages



Lead Testing



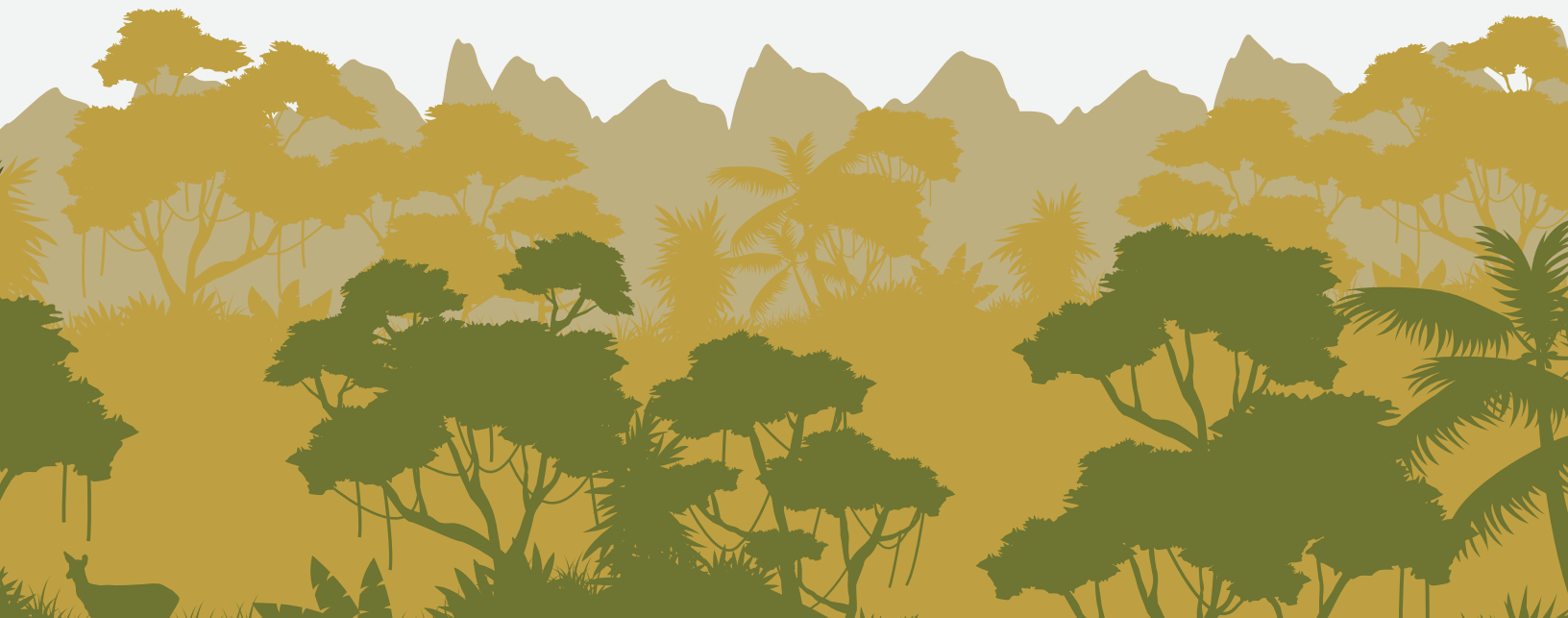
Drinking Water



Wastewater
Testing



Well Water
Analysis
(i.e. bacteriological,
nutrients, metals)



York-Durham Regional Environmental Laboratory

901 McKay Road
Pickering, Ontario L1W 3A3
1-877-551-8877
Phone: 905-686-0041
E-mail: REL@durham.ca
www.durham.ca/lab

Open Monday to Friday from 8 a.m. to 5 p.m.
with the exception of statutory holidays.

