

South York Greenway

Cycling, Pedestrian and Micromobility Corridor Feasibility Study

Virtual Public Information Centre
Thursday, April 7, 2022

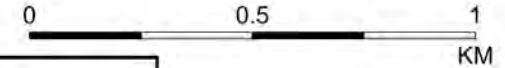


WITH



Map Legend

South York Greenway Conceptual Alignment [Hwy 50 - Humber Trail]



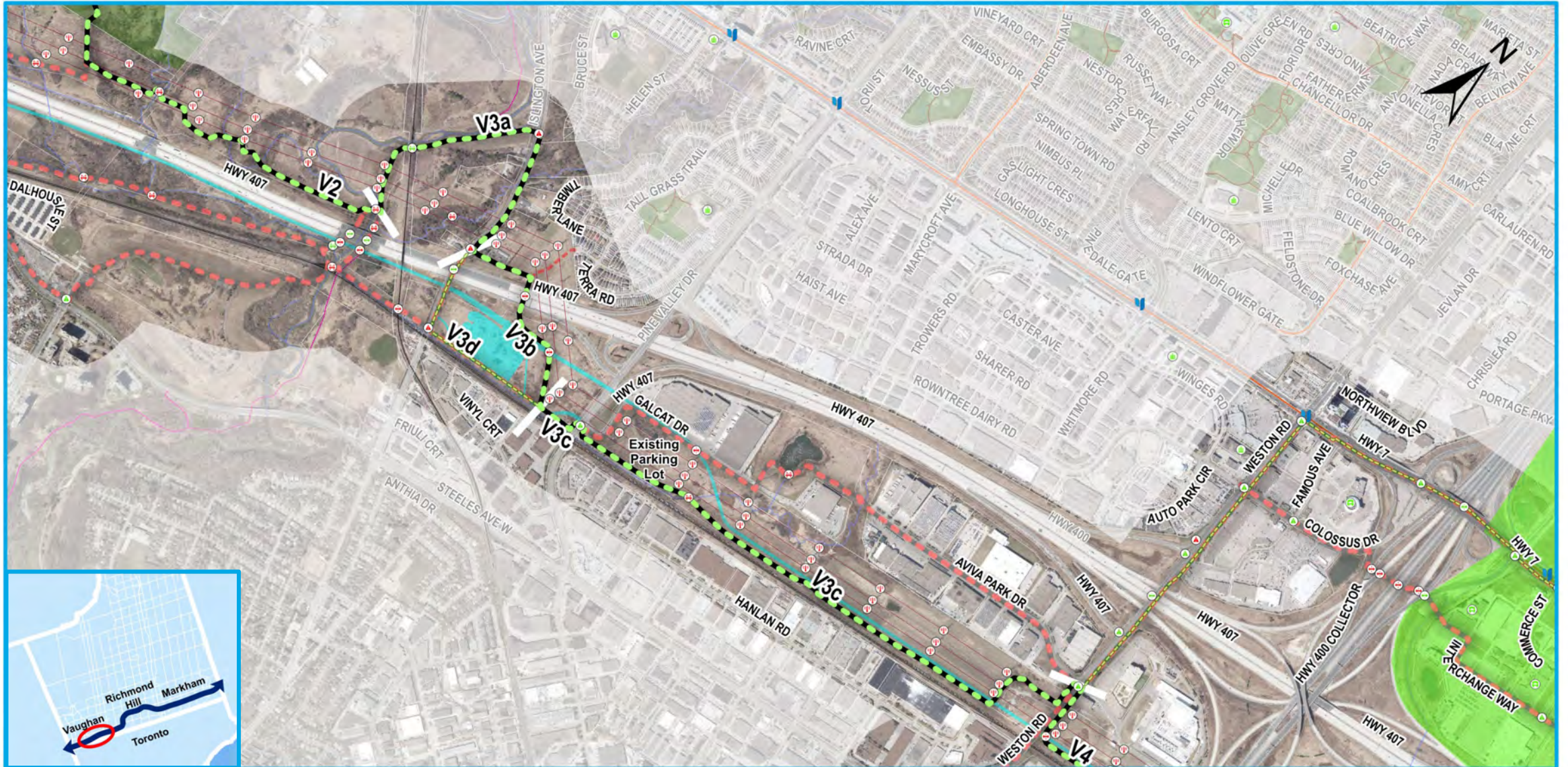
Legend				
SYG Alignment	Connecting Facilities	Key Destinations	Opportunities & Constraints	Other Elements
<ul style="list-style-type: none"> Primary Alignment Interim Alignment Secondary Alignment Spurline Connection Special Area Zone 	<ul style="list-style-type: none"> On-Road Cycling Facility Off-Road Trail Existing Major Trail Proposed Major Trail 	<ul style="list-style-type: none"> School Recreational Facility VIVA BRT Station GO Train Station TTC Subway Station 	<ul style="list-style-type: none"> Water Crossing Grade Separation Unsignalized Intersection Hydro Tower Existing Bridge Grade Separated Crossing Signalized Intersection 	<ul style="list-style-type: none"> Parkland Parcel Fabric Planned 407 Transitway Water Course Hydro Line



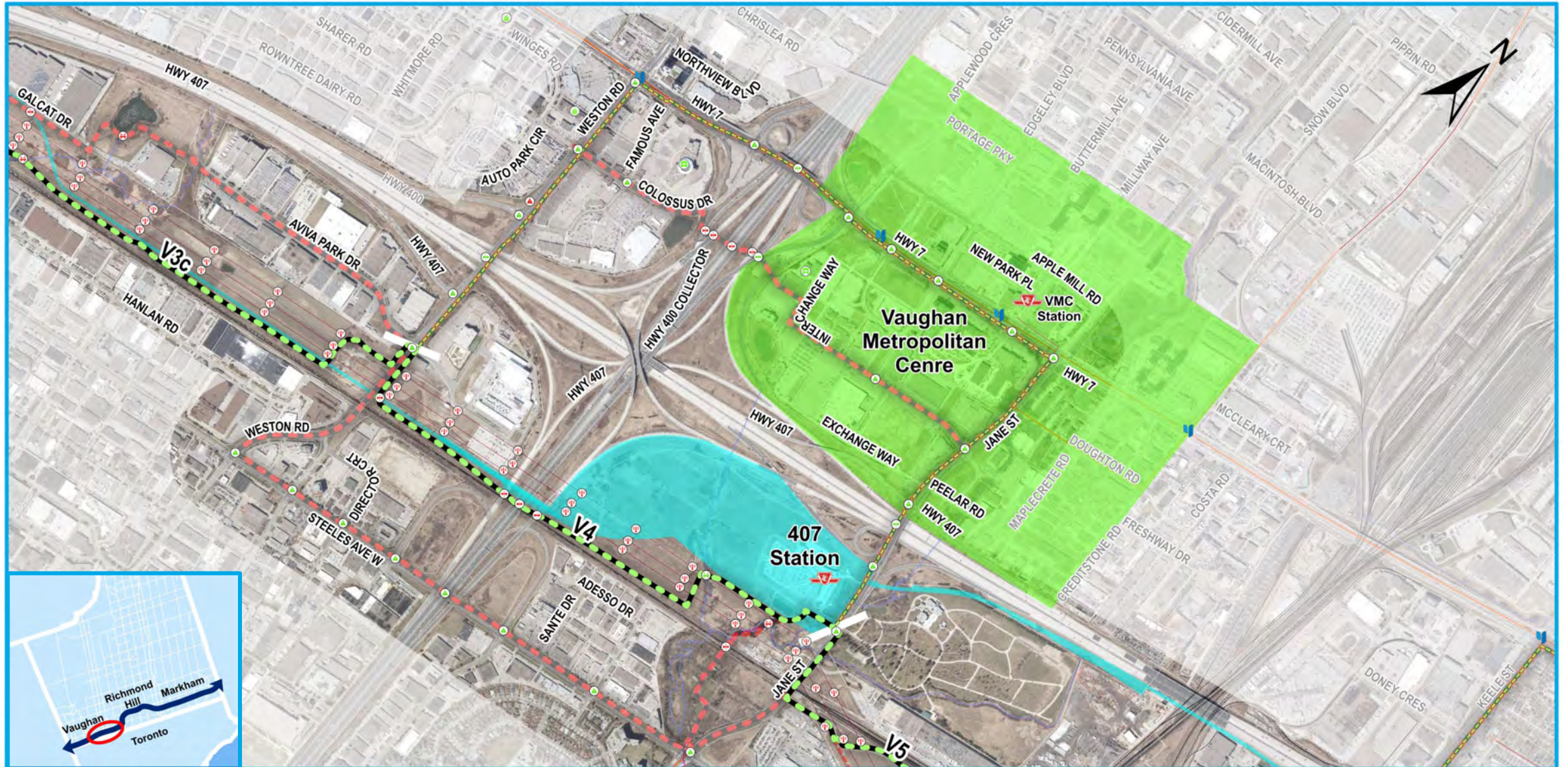
Map 1. Hwy 50 to Humber Trail (Vaughan)



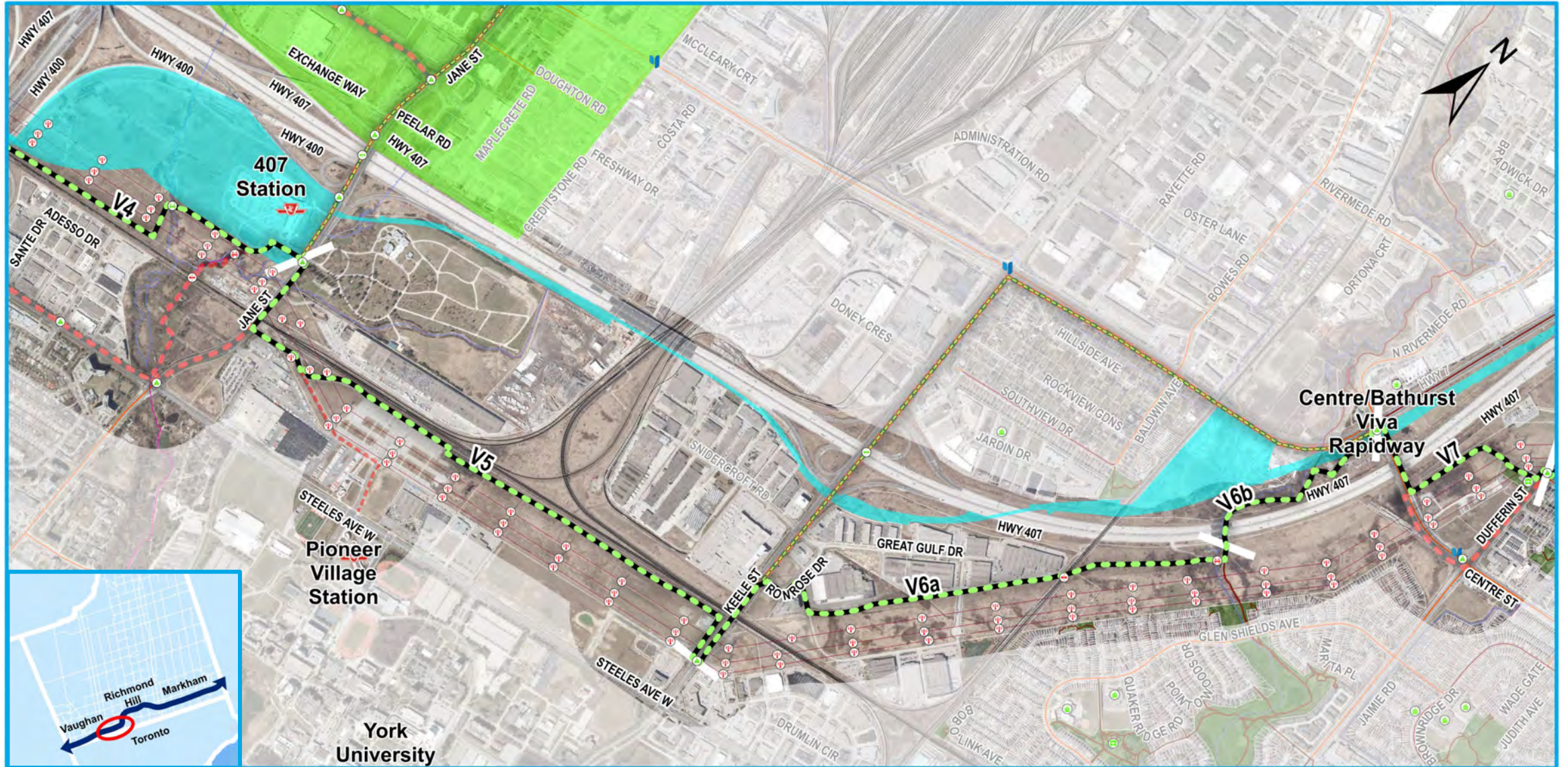
Map 2. Humber Trail to Weston Rd (Vaughan)



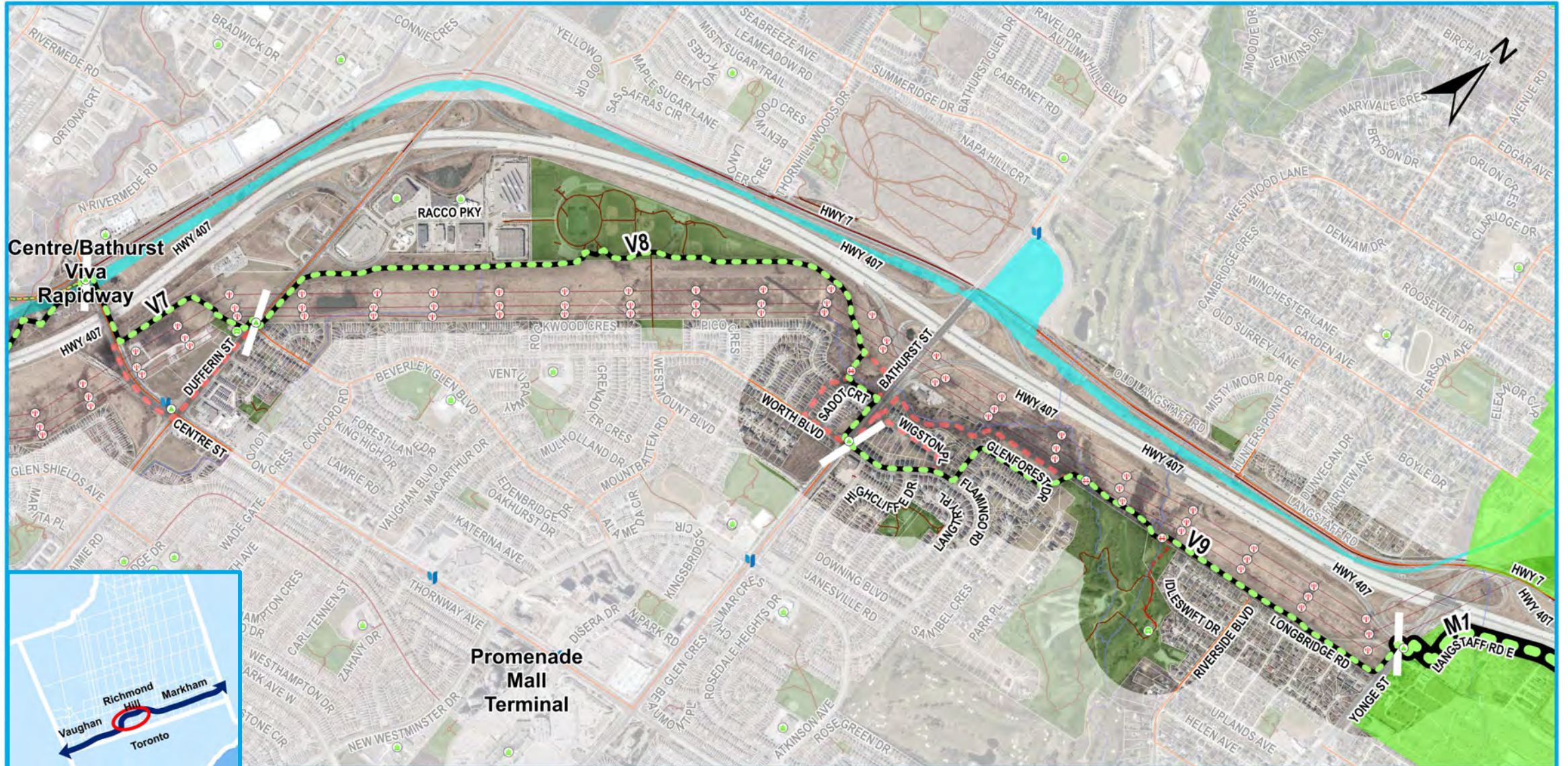
Map 3. Weston Rd to Jane St (Vaughan)



Map 4. Jane St to Centre St (Vaughan)



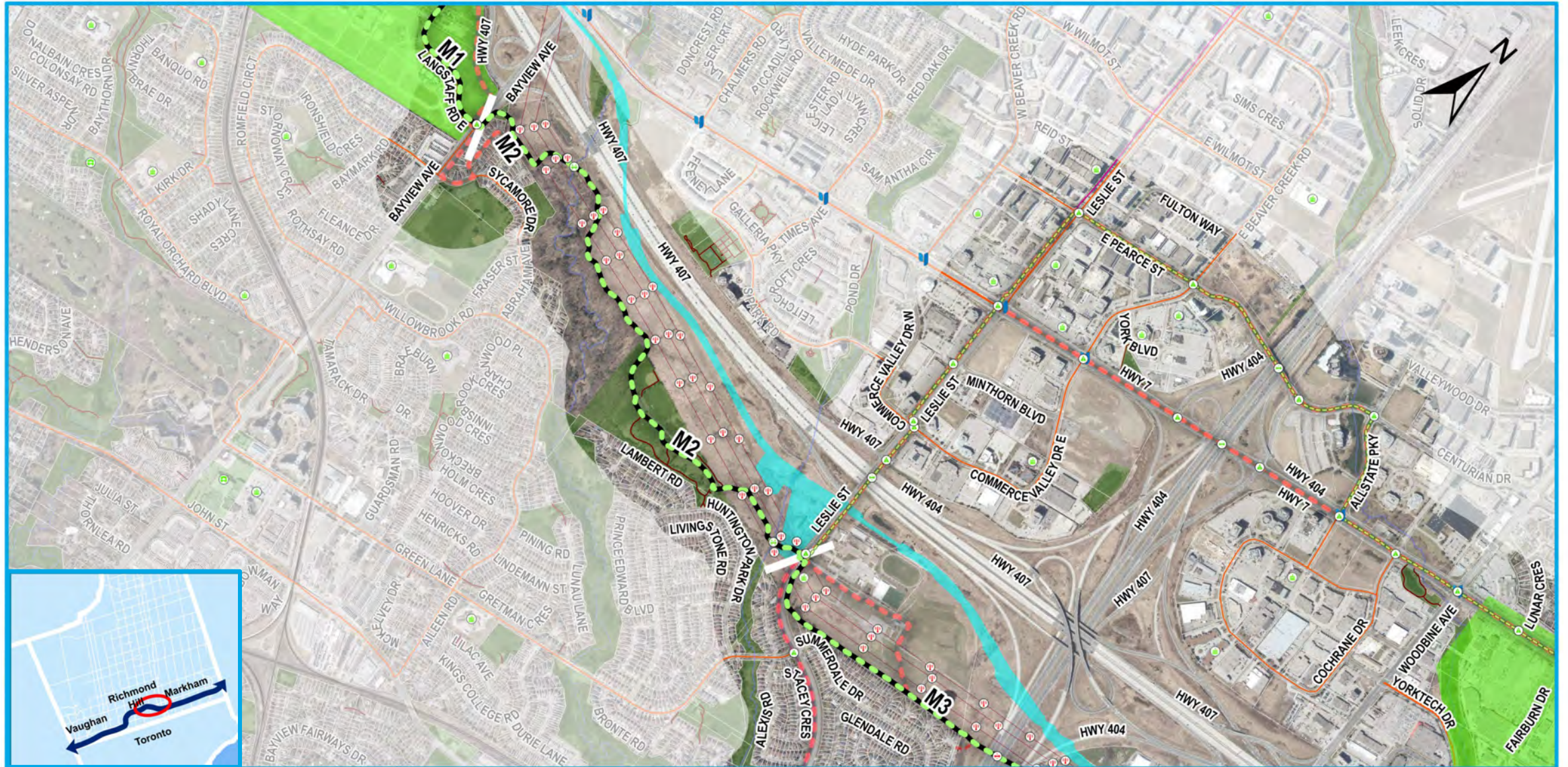
Map 5. Centre St to Yonge St (Vaughan / Richmond Hill)



Map 6. Yonge St to Bayview Ave (Richmond Hill / Markham)



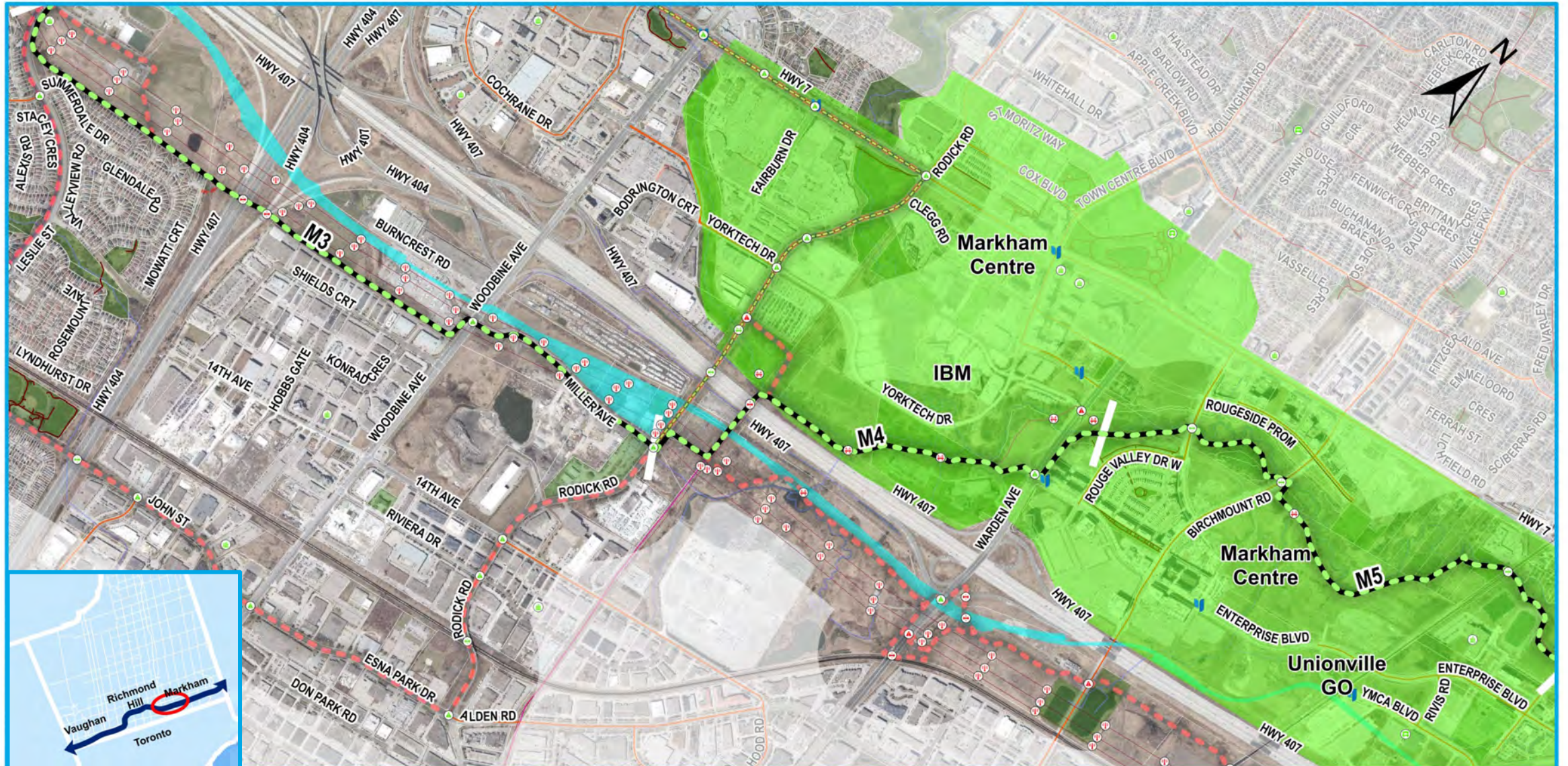
Map 7. Bayview Ave to Leslie St (Richmond Hill / Markham)



Map 8. Leslie St to Highway 404 (Richmond Hill / Markham)



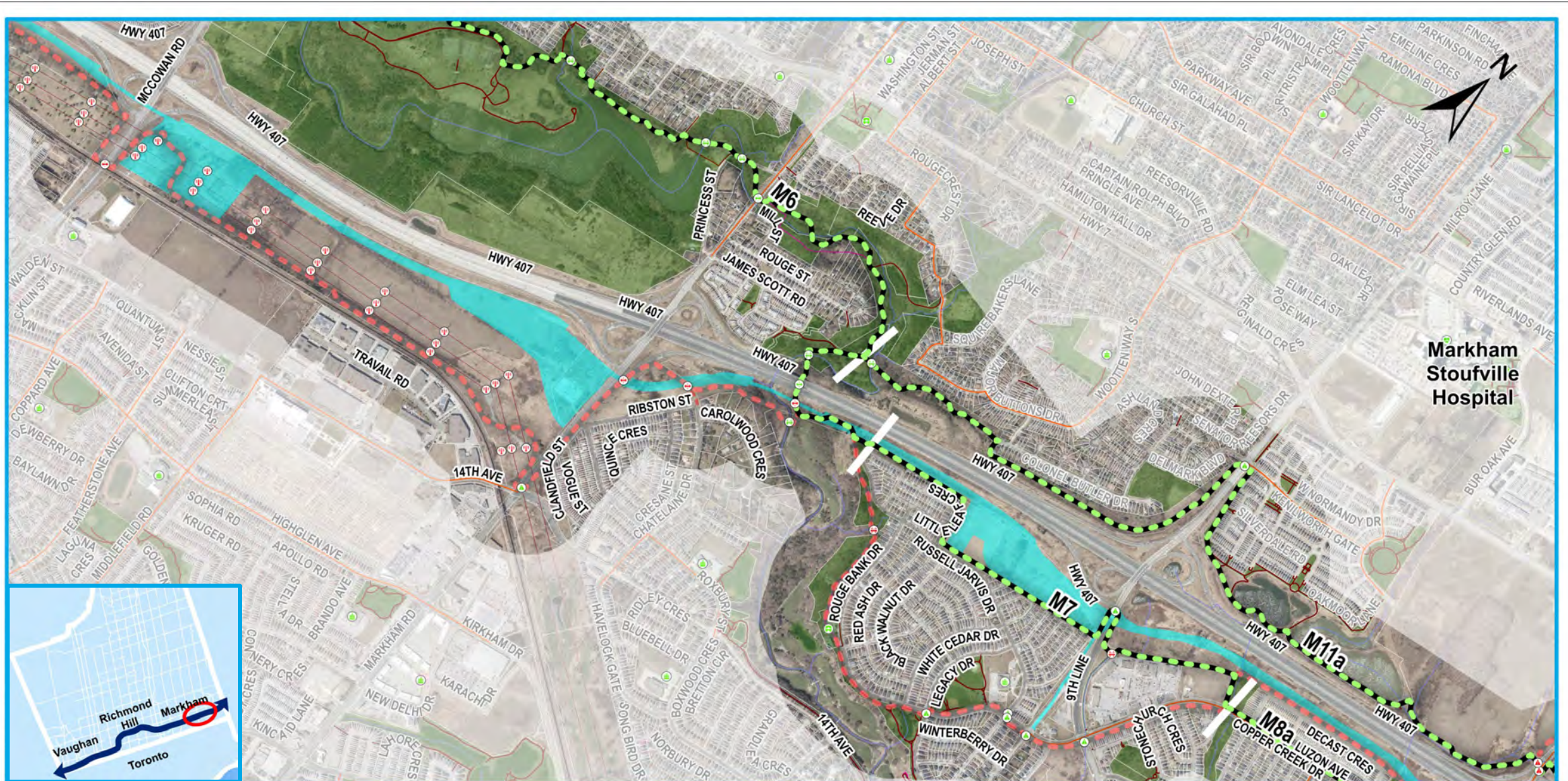
Map 9. Highway 404 to Birchmount Rd (Markham)



Map 10. Birchmount Rd to McCowan Rd (Markham)



Map 11. McCowan Rd to Box Grove Bypass (Markham)



Map 12. Box Grove Bypass to York-Durham Line (Markham)

